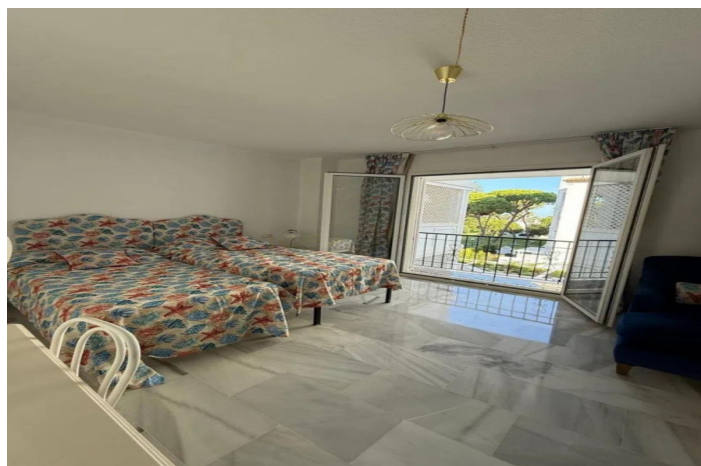
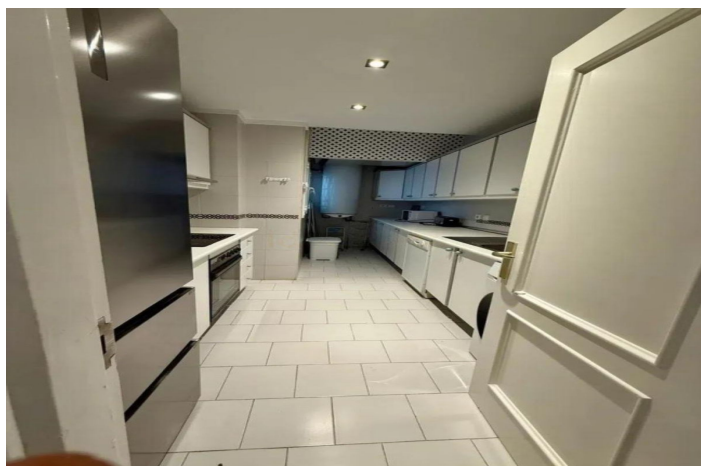
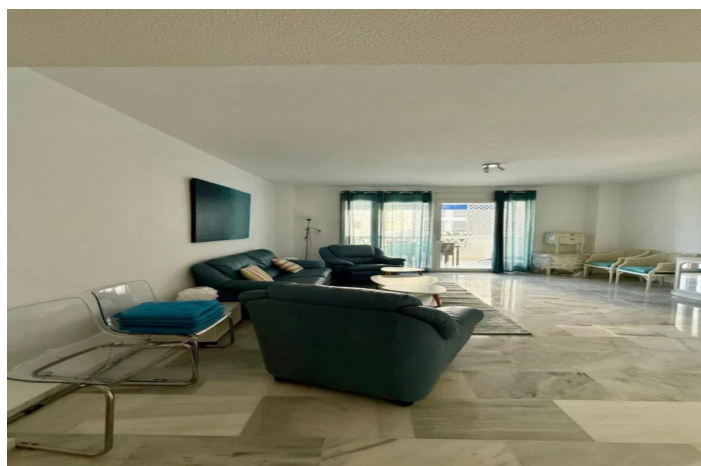
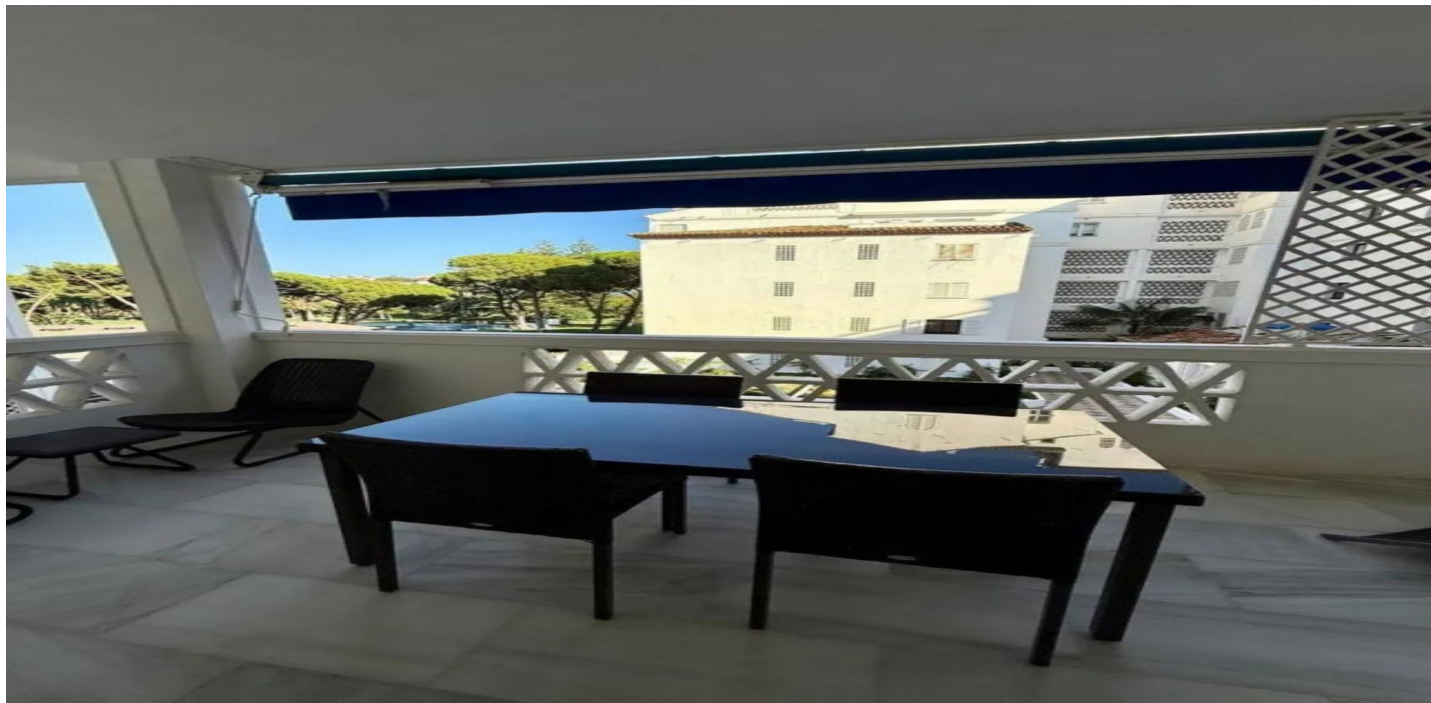




## Middle Floor Apartment for sale in Puerto Banús, Marbella

1.380.000 €

Referencia: R5110237    Dormitorios: 3    Baños: 3    Construido: 220m<sup>2</sup>    Terraza: 12m<sup>2</sup>





---

## Costa del Sol, Puerto Banús

this is an exceptional property for those who wish to enjoy a stay in a privileged location in the center of Puerto Banús, a step away from the Marina, exclusive shops and the best restaurants. The property is located on the 2nd floor and from its terrace offers wonderful views of the urbanization's garden with the sea in the background. The house consists of 3 bedrooms. The main one is excellent, very spacious and with an en-suite bathroom and balcony. The other two bedrooms are equally spacious and bright, and one of them also has an en-suite bathroom. The living-dining room is exceptional, comfortable, cozy and very bright, from which you can access a large terrace with views of the garden and the sea. The kitchen is independent, with an elegant and at the same time very functional style and has a window overlooking the interior patio. The property is located in one of the most exclusive urbanizations in Marbella, with a spectacular garden, 3 swimming pools, 2 restaurants, concierge in the portal and 24-hour private security. The parking space, with 24-hour security, is located in the same building, with direct access from the property via the elevator."

Middle Floor Apartment, Puerto Banús, Costa del Sol. 3 Bedrooms, 3 Bathrooms, Built 220 m<sup>2</sup>, Terrace 12 m<sup>2</sup>. Setting : Commercial Area, Beachside, Port, Close To Port, Close To Shops, Close To Sea, Close To Schools, Marina, Close To Marina, Urbanisation. Orientation : East, South East. Condition : Good. Pool : Communal, Children`s Pool. Climate Control : Air Conditioning, Hot A/C, Cold A/C. Views : Sea, Garden. Features : Covered Terrace, Lift, Fitted Wardrobes, Near Transport, Private Terrace, WiFi, Utility Room, Ensuite Bathroom, Access for people with reduced mobility, Double Glazing, 24 Hour Reception, Courtesy Bus, Near Church, Fiber Optic. Furniture : Part Furnished. Kitchen : Fully Fitted. Garden : Communal. Security : Gated Complex, 24 Hour Security. Parking : Underground, Garage, Covered, Private. Category : Beachfront, Resale.



## Características:

### Características

Terraza Cubierta  
Ascensor  
Cerca de Transporte  
Terraza Privada  
Baño En-Suite  
Doble acristalamiento  
24 Horas Recepción  
Armarios Empotrados  
WiFi  
Lavadero  
Servicio de Autobuses  
Cerca de una Iglesia  
Fibra óptica  
Access for people with reduced mobility

### Vistas

Vistas al Mar  
Vistas a Jardín

### Piscina

Piscina Comunitaria  
Children`s Pool

### Jardin

Jardín Comunitario

### Categoría

Frente a la playa  
Reventa

### Orientación

Este  
Orientación Sureste

### Posición

Área Comercial  
Lado de la Playa  
Cerca de Puerto  
Urbanización  
Cerca del Mar  
Cerca de Tiendas  
Cerca de Colegios  
Puerto  
Marina  
Cerca de Marina

### Muebles

Parcialmente Amueblada

### Seguridad

Recinto Cerrado  
Seguridad de 24 horas

### Climatización

Aire Acondicionado  
A/A Frio  
A/A Caliente

### Estado

Buen estado de conservación

### Cocina

Cocina Equipada

### Aparcamiento

Párking Subterráneo  
Garaje  
Párking Privado  
Párking Cubierto