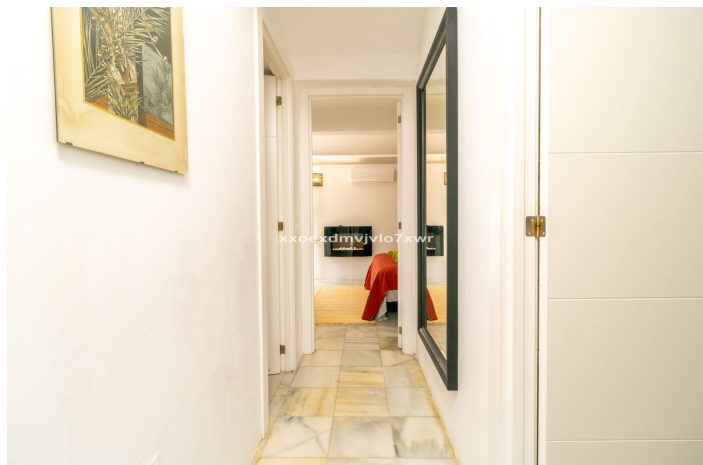




## Semi-Detached House for sale in Estepona, Estepona

645,000 €

Reference: R5168668 Bedrooms: 3 Bathrooms: 3 Plot Size: 275m<sup>2</sup> Build Size: 174m<sup>2</sup>





---

## Costa del Sol, Estepona

Located in the prestigious Bahía Dorada urbanisation, this elegant two-storey villa combines a privileged location with breathtaking panoramic views of the Mediterranean. Only 50 metres from the beach, it is ideal both as a permanent residence or as a holiday home.

The property offers a bright living room, fully equipped kitchen, three bedrooms and three bathrooms, all distributed in a functional and comfortable layout. Outside, it boasts private areas including a garden, terraces and balconies—perfect for enjoying the sunny Costa del Sol lifestyle.

Residents also benefit from excellent community facilities such as three swimming pools, a tennis court and landscaped areas with covered terraces. The complex provides convenient covered communal parking.

A charming villa by the sea that offers exclusivity, comfort and authentic Mediterranean style.

Located in the prestigious Bahía Dorada urbanisation, this elegant two-storey villa combines a privileged location with breathtaking panoramic views of the Mediterranean. Only 50 metres from the beach, it is ideal both as a permanent residence or as a holiday home.

The property offers a bright living room, fully equipped kitchen, three bedrooms and three bathrooms, all distributed in a functional and comfortable layout. Outside, it boasts private areas including a garden, terraces and balconies—perfect for enjoying the sunny Costa del Sol lifestyle.

Residents also benefit from excellent community facilities such as three swimming pools, a tennis court and landscaped areas with covered terraces. The complex provides convenient covered communal parking.

A charming villa by the sea that offers exclusivity, comfort and authentic Mediterranean style.



## Features:

### Features

Private Terrace  
Storage Room  
Ensuite Bathroom  
Solarium  
WiFi  
Paddle Tennis  
Tennis Court  
Utility Room

Barbeque

### Views

Sea Views  
Mountain  
Panoramic  
Garden  
Beach

### Pool

Communal

### Parking

Communal

### Orientation

South  
South West

### Setting

Beachside  
Urbanisation  
Close To Sea  
Beachfront  
Marina  
Close To Marina  
Front Line Beach Complex

### Kitchen

Fully Fitted

### Category

Investment  
Beachfront

### Climate Control

Air Conditioning

### Condition

Good

### Garden

Communal  
Private Garden