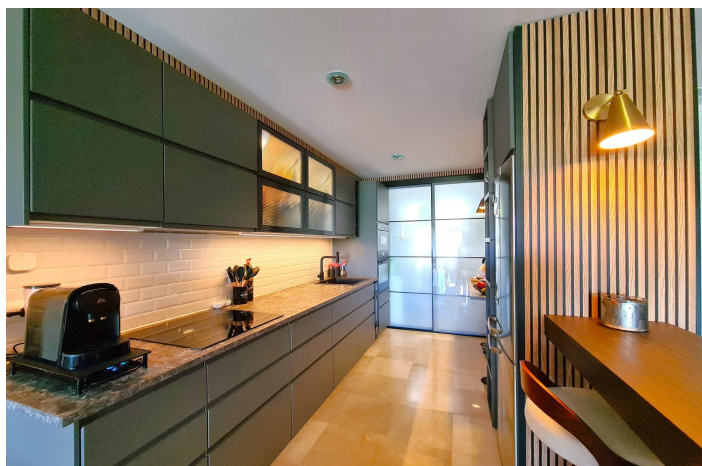




Ground Floor Apartment for sale in Benahavís, Benahavís

675.000 €

Referencia: R5034646 Dormitorios: 3 Baños: 2 Terreno: 70m² Construido: 110m² Terraza: 65m²





Costa del Sol, Benahavís

FANTASTIC 3-BEDROOM GROUND FLOOR APARTMENT WITH LARGE GARDEN Located in a quiet and safe residential area, surrounded by nature, this apartment is very well connected to the AP7 motorway, which connects the entire Costa del Sol. Just a 5-minute drive from Guadalmina Alta and the prestigious Atalaya School, with the beach, supermarkets, pharmacies, and restaurants 10 minutes away. The property was completely renovated in 2025, so everything is as good as new. Upon entering the apartment, we find an entrance hall leading to the spacious living-dining room with beautiful views of the garden, which also has access to a large, partially covered terrace. It also has a spacious, brand-new, modern kitchen equipped with high-end appliances and access to the separate laundry room. The property's bedrooms and bathrooms are distributed through a corridor. The spacious master bedroom features a large built-in wardrobe with access to and views of the terrace/garden. It also has a fully renovated en-suite bathroom in a contemporary style, equipped with a shower and a window that provides abundant natural light and ventilation. The two single bedrooms have built-in wardrobes and are bright. One of them has access to the garden. The second bathroom is located at the entrance to the hallway, connecting to the common areas of the house (living/dining/kitchen) and is located next to the two single bedrooms. This full bathroom also has a shower. The property enjoys the convenience of having a private parking space, in addition to enjoying the community gardens and saltwater pools. **WE RECOMMEND A VIEWING!!**



Características:

Características

Terraza Cubierta
Ascensor
Terraza Privada
Baño En-Suite
Suelos de Mármol
Doble acristalamiento
Armarios Empotrados
Solario
WiFi
Lavadero

Vistas

Vistas al Mar
Vistas a Montaña
Vistas Panorámicas
Vistas al Campo
Vistas a Jardín
Vistas a Golf

Piscina

Piscina Comunitaria
Children`s Pool

Jardin

Jardín Comunitario
Jardín Privado

Servicios Públicos

Electricidad
Agua Potable
Teléfono
Gas

Orientación

Sur

Posición

Cerca de Golf
Urbanización
Cerca de Tiendas
Cerca de Ciudad
Cerca de Colegios
Cerca de Marina

Muebles

Opcionales

Seguridad

Recinto Cerrado
Alarma
Portero Automático

Categoría

Casas de vacaciones
Inversion
Golf
Lujo
Reventa

Climatización

Aire Acondicionado
A/A Frio
A/A Caliente

Estado

Excelente estado de conservación
Reformado Recientemente

Cocina

Cocina Equipada

Aparcamiento

Parking Subterráneo
Garaje
Parking Privado