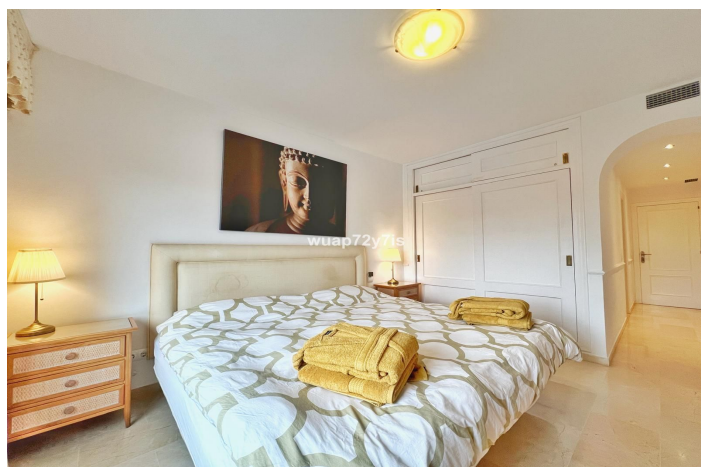




## Middle Floor Apartment for sale in Estepona, Estepona

469,000 €

Reference: R5121478 Bedrooms: 2 Bathrooms: 2 Build Size: 100m<sup>2</sup> Terrace: 50m<sup>2</sup>





---

## Costa del Sol, Costalita

Park Beach – 2 Bed | 2 Bath | Roof Terrace | €549,000

Welcome to this bright and inviting 2-bedroom, 2-bathroom apartment located in the exclusive Park Beach community, ideally nestled between the vibrant towns of Marbella and Estepona.

This spacious home features a modern open-plan kitchen that flows into a large, elegant living room with direct access to a sunny private balcony—perfect for morning coffee or evening relaxation. The kitchen comes fully equipped and is ideal for preparing meals and entertaining guests.

A true highlight of this property is the impressive roof terrace (solarium) offering panoramic views and all-day sunshine. Whether you’re dining under the stars, lounging in the sun, or enjoying the sea breeze, this rooftop oasis is a perfect outdoor retreat. Additionally, the home includes a second large terrace, expanding your outdoor living space even further.

### Community & Area Highlights:

Located just a short stroll from the beach, Park Beach is a well-maintained, quiet residential community known for its tranquility and lush surroundings. Residents enjoy access to two beautiful communal swimming pools, night-time security, and peaceful, landscaped pathways. The area offers a true sense of privacy and relaxation while still being connected to everything you need.

Park Beach is just minutes from a wide range of local amenities, including supermarkets, restaurants, beach clubs, golf courses, and international schools. Its strategic location between Marbella and Estepona offers easy access to both towns, as well as nearby attractions like Puerto Banús and the new Laguna Village development.

Whether you’re seeking a full-time residence, a holiday getaway, or a smart investment, this property offers the perfect blend of location, comfort, and lifestyle.



## Features:

### Features

Covered Terrace  
Lift  
Private Terrace  
Marble Flooring  
Solarium  
Utility Room

### Views

Sea Views  
Mountain  
Garden  
Pool

### Pool

Communal

### Security

Gated Complex  
24 Hour Security

### Orientation

South

### Setting

Beachside  
Urbanisation  
Close To Sea  
Close To Shops

### Kitchen

Fully Fitted

### Parking

Street

### Climate Control

Air Conditioning

### Condition

Good

### Garden

Communal