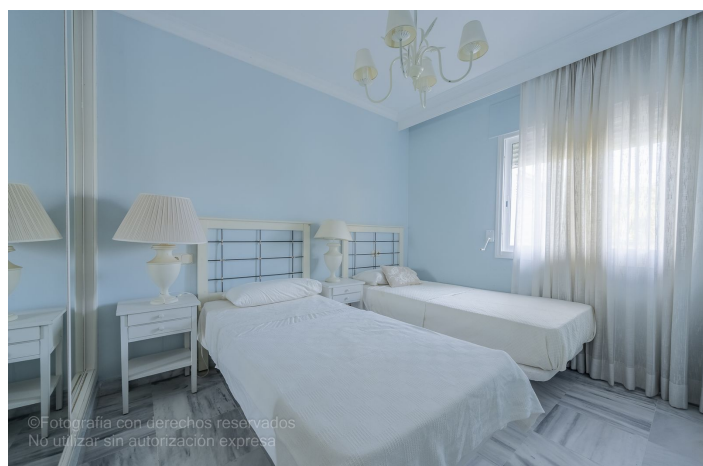




Penthouse for sale in Puerto Banús, Marbella

525,000 €**Reference: R5131972 Bedrooms: 2 Bathrooms: 2 Build Size: 80m² Terrace: 70m²**



Costa del Sol, Puerto Banús

Bright two-bedroom, two-bathroom penthouse located in La Dama de Noche, one of the most exclusive and sought-after residential complexes in the area. Just one kilometre from the beach and Puerto Banús, it offers the tranquillity of a residential setting along with the convenience of having all services close at hand. Situated on the fourth floor with lift access, it features 81 m² of interior space laid out in a practical and functional way, along with an impressive 77 m² southeast-facing terrace, perfect for enjoying the sun, relaxing outdoors, or spending time with family and friends, all while taking in the pleasant open mountain views. Inside, the marble floors and bathrooms, generous fitted wardrobes, and a spacious, bright living room create a warm and comfortable atmosphere for everyday living. The property includes a parking space and is set within a community offering two swimming pools, extensive landscaped gardens, a children's play area, 24-hour security, and concierge service. Its location provides excellent connections to Marbella, San Pedro, and Nueva Andalucía, and is surrounded by shops, restaurants, and sports facilities, making it an ideal choice both as a permanent residence or an investment., Marbella, Costa del Sol. Built 0 m². Setting : Commercial Area, Close To Golf, Close To Port, Close To Shops, Close To Sea, Close To Schools, Marina, Close To Marina, Urbanisation. Orientation : East. Condition : Good. Pool : Communal. Views : Mountain, Panoramic. Features : Lift, Fitted Wardrobes, Near Transport, Private Terrace, Paddle Tennis, Tennis Court, Ensuite Bathroom, Marble Flooring, Restaurant On Site, Near Church. Furniture : Optional. Kitchen : Partially Fitted. Garden : Communal. Security : Gated Complex, Entry Phone, 24 Hour Security. Parking : Underground, Private. Category : Resale.



Features:

Features

Lift
Near Transport
Private Terrace
Ensuite Bathroom
Marble Flooring
Fitted Wardrobes
Paddle Tennis
Tennis Court
Restaurant On Site
Near Church

Setting

Commercial Area
Close To Port
Urbanisation
Close To Sea
Close To Shops
Close To Schools
Marina
Close To Marina

Furniture

Optional

Security

Gated Complex
24 Hour Security
Entry Phone

Orientation

East

Condition

Good

Kitchen

Partially Fitted

Parking

Underground
Private

Views

Mountain
Panoramic

Pool

Communal

Garden

Communal

Category

Resale