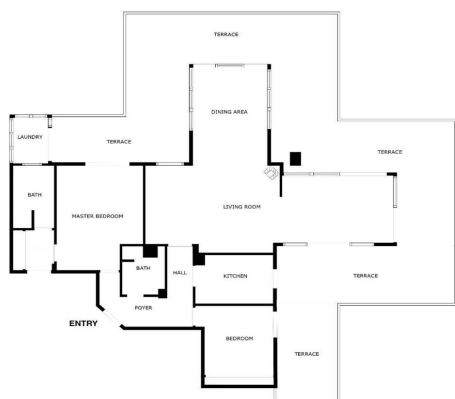


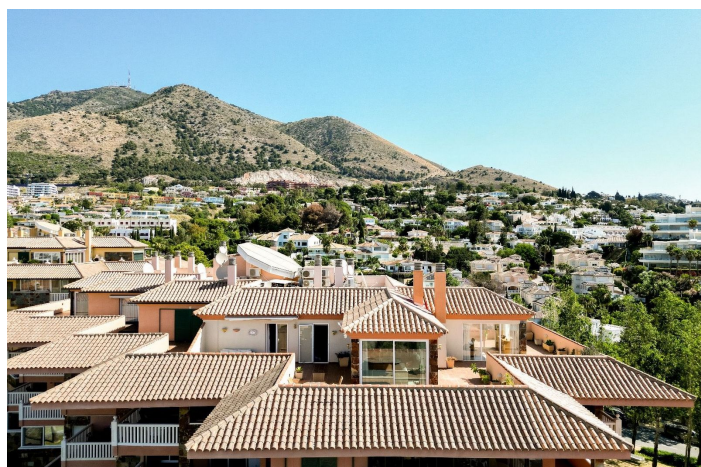


Penthouse for sale in Benalmadena Costa, Benalmádena

610,000 €

Reference: R4777045 Bedrooms: 2 Bathrooms: 2 Plot Size: 272m² Build Size: 135m² Terrace: 137m²


SIZES ARE APPROXIMATE, ACTUAL MAY VARY.





Costa del Sol, Benalmadena Costa

Welcome to your dream home in the prestigious area of Higueron! This exquisite 2-bedroom penthouse offers unparalleled luxury and comfort with breathtaking sea views and a host of modern amenities. The Reserva del Higuerón Housing Estate is an idyllic place offering the best views, an architectural style that adapts to the land's natural features and a wide variety of services. The entire area is granted safety, exclusiveness and wellbeing, as well as the satisfaction of the highest demands with every development. Key Features: Prime Location: Situated in the sought after area of Higueron, you are conveniently close to high-end restaurants, well equipped fitness center, tennis court and top-rated schools and the Higueron 5 stars hotel Enjoy unparalleled privacy in the community's highest penthouse, offering complete peace with no neighbouring units overlooking your space. Panoramic Sea Views: Revel in the serene and picturesque sea views right from your home, providing a constant reminder of the beauty that surrounds you. Tropical Gardens: The complex features beautifully landscaped tropical gardens and 2 pools, offering a peaceful and lush environment to unwind and enjoy nature. Modern Amenities: Benefit from the exclusive amenities within the complex, including 2 swimming pools, spa, tennis courts, and a well-equipped fitness center. Additional Features: Fireplace Two spacious bedrooms with direct access to the terrace EASY Possibility of converting it into a 3 bedroom 5 electric awnings Higuerón bus that takes you to the beach in Carvajal and shopping area including restaurants, pharmacy and Carrefour supermarket Laundry room Secure underground parking and storage room. Only 20 minutes away from the airport! 135m2 Built + 138m2 Terrace



Features:

Features

Lift
Near Transport
Private Terrace
Satellite TV
Storage Room
Ensuite Bathroom
Marble Flooring
Double Glazing
Fitted Wardrobes
WiFi
Courtesy Bus
Basement

Views

Sea Views
Mountain
Panoramic
Garden

Pool

Communal
Children`s Pool

Garden

Communal

Utilities

Electricity
Drinkable Water

CO2 Emission Rating

E

Orientation

East
South
West

Setting

Beachside
Close To Golf
Close To Port
Urbanisation
Close To Sea
Close To Town
Close To Schools

Furniture

Part Furnished

Security

Gated Complex
Entry Phone

Category

Holiday Homes
Investment
Luxury

Climate Control

Air Conditioning
Cold A/C
Hot A/C
Fireplace
U/F/H Bathrooms

Condition

Good

Kitchen

Fully Fitted

Parking

Underground
Garage
Private
Covered

Energy Rating

E