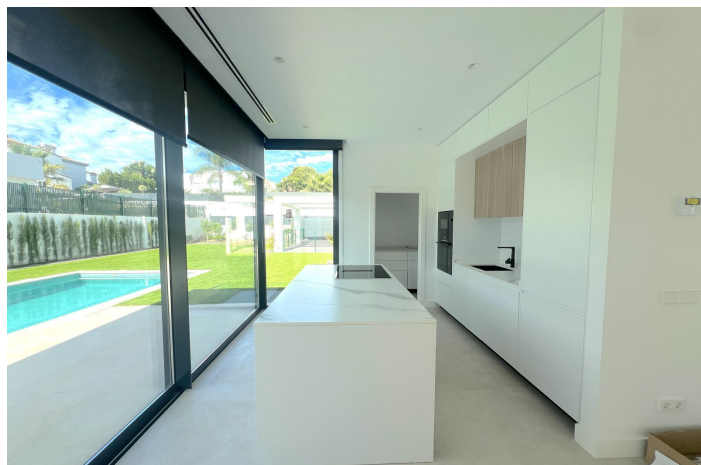
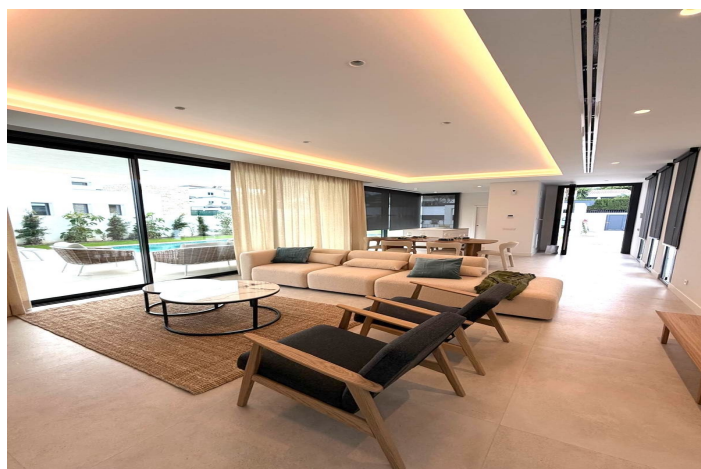




## Detached Villa for sale in Atalaya, Estepona

2.000.000 €

Referencia: R5172730    Dormitorios: 5    Baños: 6    Terreno: 645m<sup>2</sup>    Construido: 302m<sup>2</sup>    Terraza: 85m<sup>2</sup>





---

## Costa del Sol, Atalaya

Discover the epitome of luxury living with this brand new villa situated in the prestigious Montebiarritz Atalaya. Ideally located just 10 minutes from the vibrant Puerto Banus and in close proximity to top private schools and essential amenities, this property offers both convenience and elegance.

### \*Property Features:\*

- **\*Ground Floor\*:** Experience an open and airy living space where the integrated kitchen seamlessly flows into the dining and living areas. This inviting space grants direct access to a charming porch and a stunning pool. Additionally, you will find a well-appointed bedroom complete with an en-suite bathroom, along with a convenient guest toilet.
- **\*Second Floor\*:** This level is dedicated to ultimate comfort, featuring a luxurious master bedroom that boasts its own private pool and a spacious walk-in closet. An additional bedroom with an en-suite bathroom ensures ample accommodation for family or guests.
- **\*Underground Level\*:** Embrace entertainment and relaxation in this expansive area, which includes two bedrooms, each with their own en-suite bathrooms. Enjoy quality time in the second living room, unwind in the cinema room, rejuvenate in the spa, or manage household tasks effortlessly in the laundry room.

This exquisite villa harmoniously blends modern design with functional living spaces, making it the perfect sanctuary for those seeking a refined lifestyle in a sought-after location.



## Características:

### Características

Terraza Cubierta  
Terraza Privada  
Trastero - Almacén  
Baño En-Suite  
Doble acristalamiento  
Armarios Empotrados  
Solario  
Aptmmt. Huéspedes  
Lavadero  
Barbacoa  
Domotica  
Alojamiento del personal  
Sótano  
Access for people with reduced mobility

### Vistas

Vistas a Montaña  
Vistas a Jardín  
Vistas a Bosques

### Piscina

Piscina Privada

### Jardín

Jardín Privado  
Jardín de fácil mantenimiento

### Servicios Públicos

Electricidad  
Agua Potable  
Teléfono  
Paneles solares fotovoltaicos

### Orientación

Sur

### Posición

Cerca de Golf  
Urbanización  
Cerca de Tiendas  
Cerca de Ciudad  
Cerca de Colegios  
Pueblo de Montaña  
Cerca de los Bosques

### Muebles

Sin Amueblar

### Seguridad

Alarma  
Persianas Eléctricas  
Portero Automático  
Caja fuerte

### Categoría

Casas de vacaciones  
Inversion  
Lujo  
Reventa  
Contemporáneo

### Climatización

Aire Acondicionado  
A/A Frio  
A/A Caliente  
Calefacción Central.  
Suelo Radiante  
Baño

### Estado

Nueva Construcción

### Cocina

Cocina Equipada

### Aparcamiento

Parking Cubierto