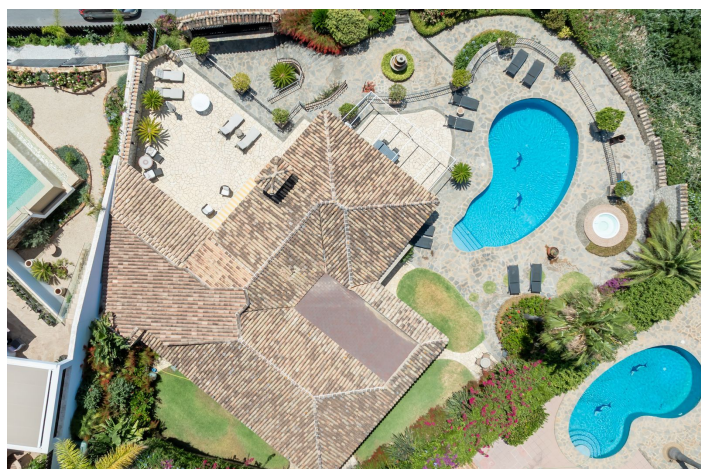




Detached Villa for sale in La Capellania, Benalmádena

2,795,000 €Reference: R5009827 Bedrooms: 4 Bathrooms: 4 Plot Size: 1,072m² Build Size: 328m² Terrace: 89m²



Costa del Sol, Benalmádena

Authentic Luxury Villa with Breathtaking Panoramic Sea Views La Capellanía, Benalmádena | 4 Beds | 4 Baths | 2 Guest Apartments | Sea View | Jacuzzi | Wine Room Discover a unique blend of Andalusian charm and modern comfort in this exceptional villa, located in the sought-after La Capellanía neighborhood—just minutes from the beaches, restaurants, and the vibrant towns of Benalmádena and Fuengirola. Facing southwest, the property offers total privacy, all-day sun, and breathtaking sea views. Beautiful stonework, handcrafted details, and lush gardens give it authentic character and warmth. Inside, you'll find an open-plan layout with a stylish designer kitchen, bright living room with fireplace, Bang & Olufsen sound system, and seamless access to sunny terraces. The outdoor area features a large oval pool, jacuzzi, and multiple lounging areas—perfect for relaxing or entertaining. Highlights include: • 2 bedrooms in the main house + 2 fully equipped guest apartments • Indoor/outdoor lounge with retractable glass curtains • Unique stone wine room • Spacious terraces, sea views, and total tranquility • Private garage + extra parking Set on a 1,072 m² plot with 328 m² built, this home is ideal as a luxury residence, holiday escape, or high-performing rental investment. Only a short walk to Playa Carvajal and the famous La Cubana beach bar. Supermarkets, shops, and cafés are nearby, and the 5-star Higuera Hilton resort is just a few minutes away. Whether you're looking for your dream home or a smart investment, Villa Andalucía offers the best of both worlds. We have the keys for easy viewings – come and experience it for yourself.



Features:

Features

Covered Terrace
Private Terrace
Ensuite Bathroom
Marble Flooring
Double Glazing
Fitted Wardrobes
WiFi
Guest Apartment
Utility Room
Jacuzzi
Barbeque

Views

Sea Views
Mountain
Panoramic

Pool

Private Pool

Garden

Private Garden
Easy Maintenance

Utilities

Electricity

CO2 Emission Rating

E

Orientation

South West

Setting

Close To Sea
Close To Shops
Close To Town
Close To Schools

Furniture

Optional

Security

Alarm System
Electric Blinds
Entry Phone

Category

Holiday Homes
Investment
Bargain
Luxury
Resale
Contemporary

Climate Control

Air Conditioning

Condition

Excellent

Kitchen

Fully Fitted

Parking

Garage
Private
More Than One

Energy Rating

E