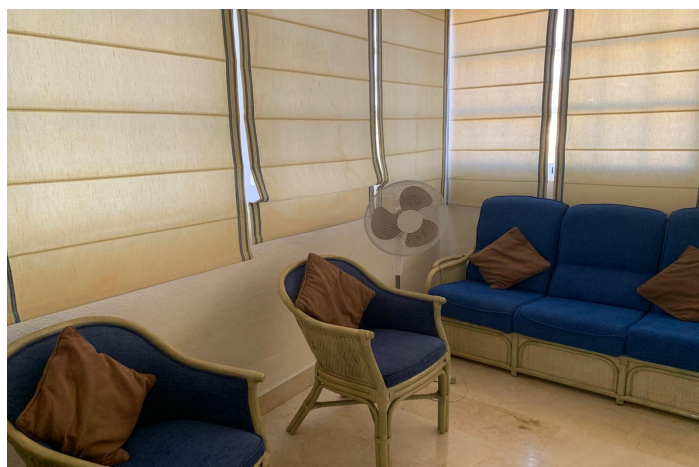




## Penthouse Duplex for sale in Elviria, Marbella

850.000 €

Referentie: R5207863 Slaapkamers: 3 Badkamers: 2 Perceelgrootte: 223m<sup>2</sup>





---

## Costa del Sol, Elviria

Elegant 3-Bedroom Beachfront Penthouse in White Pearl Beach, Elviria, Marbella An exceptional 3-bedroom, 2-bathroom duplex penthouse situated in the exclusive White Pearl Beach complex, one of Marbella East's most sought-after beachfront communities. Located just steps from the sand, this beautifully maintained home offers a rare combination of luxury, space, and proximity to the sea. The property spans approximately 160 m<sup>2</sup> of interior living space across two levels. The main floor features a bright open-plan living and dining area with a fireplace and direct access to a large south-facing terrace overlooking the tropical gardens and communal pool. A fully fitted kitchen, two generous bedrooms, and a family bathroom complete this level. Upstairs, the master suite includes an en-suite bathroom and a private terrace with partial sea views – perfect for relaxing or enjoying the sunset. White Pearl Beach is a gated, secure development with 24-hour security, immaculate tropical gardens, and communal swimming pools, including a heated pool for year-round enjoyment. Additional features include underground parking, lift access, air conditioning (hot/cold), marble floors, and double glazing. Perfect as a permanent residence or a luxury holiday home, this property offers peace, privacy, and unbeatable access to Marbella's best beach clubs, restaurants, and local amenities.



## Kenmerken:

### Extra's

Overdekt terras  
Tillen  
Nabij vervoer  
Privé Terras  
Marmeren vloeren  
Dubbele beglazing  
24-uurs receptie  
Inbouwkasten  
WiFi

### Uitzicht

Zeezicht  
Weids  
Garden Views  
Pool Bekeken  
Urban Bekeken

### Zwembad

Gemeenschappelijk zwembad

### Beveiliging

Omheind complex  
24 -uurs beveiliging  
Alarmsysteem  
Deurbel met intercom

### Categorie

Vakantiehuis  
Aan zee  
Luxe  
Bestaande bouw

### Zonorientatie

zuiden  
South West Orientation

### Ligging

Dicht bij strand  
Urbanisatie  
Dichtbij zee  
Dicht bij winkels  
Dichtbij scholen  
Eerstelijns strand

### Meubilering

optioneel Furniture

### Parkeergelegenheid

ondergrondse parkeergarage

### Klimaatbeheersing

Airconditioning  
Koude A/C  
Warme A/C

### Huidige Staat

Uitstekende conditie

### Tuin

gemeenschappelijke tuin  
aangelegde tuin

### Voorzieningen

Elektriciteit  
Telefoon