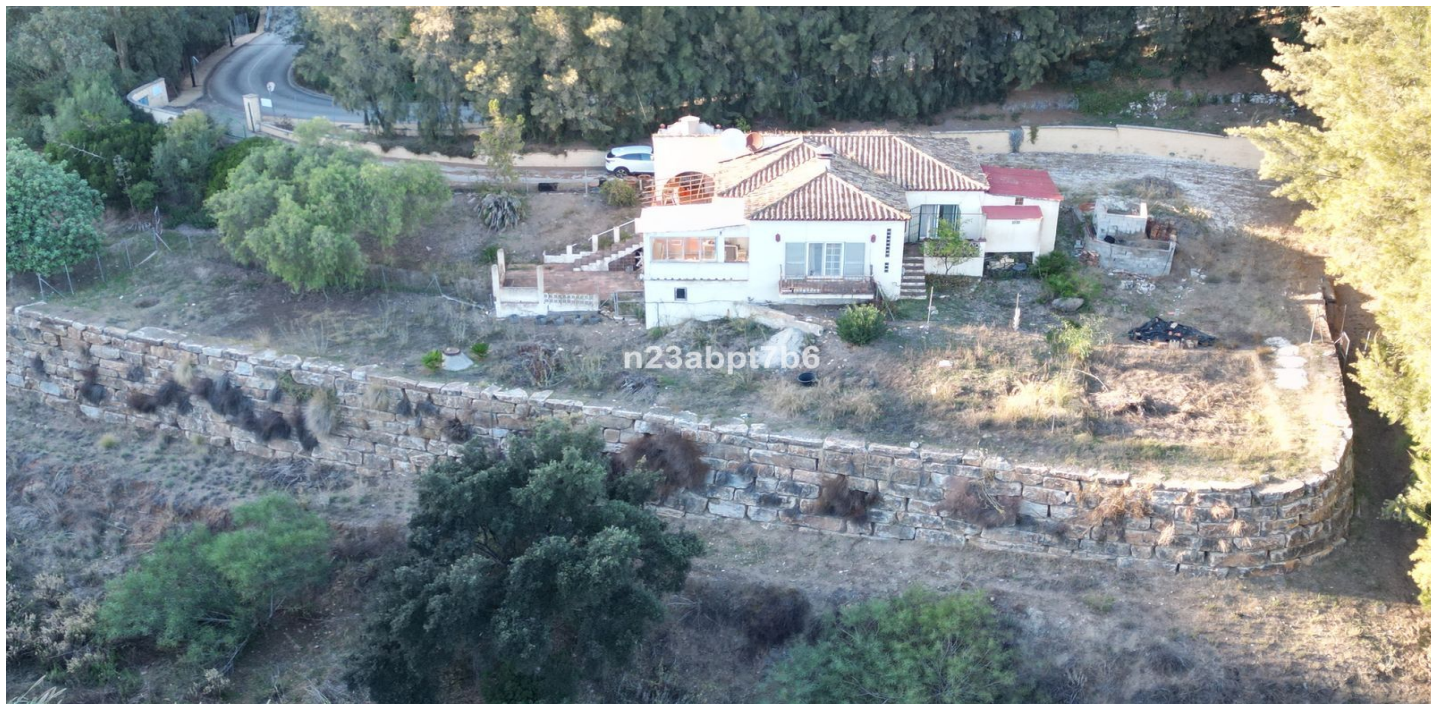




## Abstandsvilla zum Verkauf in Los Almendros, Benahavís

1.350.000 €

Referenz: R5223385 Schlafzimmer: 2 Badezimmer: 2 Grundstücksgröße: 5.842m<sup>2</sup> Garten: 133m<sup>2</sup> Terrasse: 51m<sup>2</sup>





---

## Costa del Sol, Los Almendros

Luxury Renovation Project in Puerto del Almendro, Benahavís. Build your dream villa in the heart of one of the Costa del Sol's most exclusive green oases.

Discover Puerto del Almendro, an ultra-private gated community nestled in the lush, rolling hills of Benahavís, just 10 minutes from Puerto Banús and 15 minutes from Marbella, with world-class golf courses, Michelin-starred restaurants and elite international schools nearby and more...

With unrestricted renovation potential, this is one of the rarest investment opportunities in southern Spain – perfect for discerning buyers, luxury developers and eco-conscious investors seeking to create a custom-built, modern villa with panoramic views, smart home technology and sustainable design.

### Property Features:

- \* Expansion potential: add more M2 of built area (subject to local regulations) to create a luxury 4–6-bedroom villa with your own taste and style.
- \* A long retention wall in place, that will save a large extra cost of build it.
- \* Prime location, zero competition – Puerto del Almendro is one of the least saturated and most exclusive gated communities in Benahavís, offering unparalleled privacy, security and prestige compared to mass-market developments. Walk to nature and drive to luxury: enjoy the proximity to many world famous golf courses, Puerto Banús and Marbella's Golden beaches.
- \* High ROI potential: Benahavís has seen a 42% increase in property values since 2020.
- \* Malaga International airport and Gibraltar airport are about 50 minutes drive.

Puerto del Almendro is a gated community located in one of the greenest and most tranquil areas of Benahavís, on the Ronda road.



## Eigenschaften:

### Merkmale

Überdachte Terrasse

Private Terrasse

Holzböden

### Ansichten

Berg

Garten

### Küche

Voll ausgestattet

### Parken

Privat

Mehr als eins

### Orientierung

Süden

### Einstellung

In der Nähe von Golf

Urbanisierung

In der Nähe des Waldes

### Garten

Privat

### Versorgungsunternehmen

Strom

Trinkbares Wasser

### Klimakontrolle

Kamin

### Zustand

Gerecht

Renovierung erforderlich

Wiederherstellung erforderlich

### Sicherheit

Gated Complex

### Kategorie

Investition

Wiederverkauf