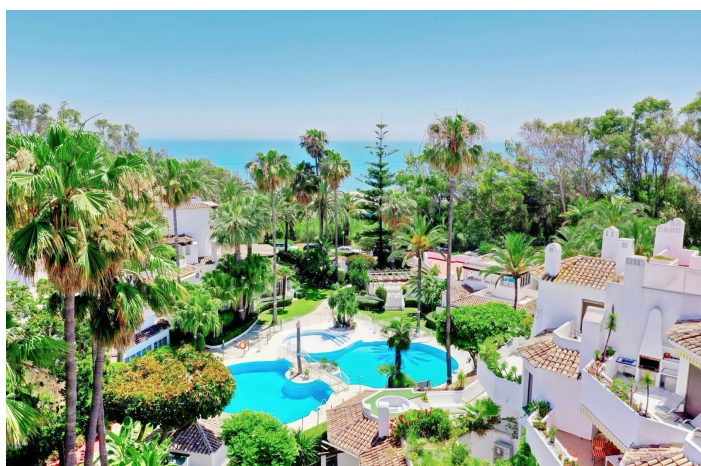
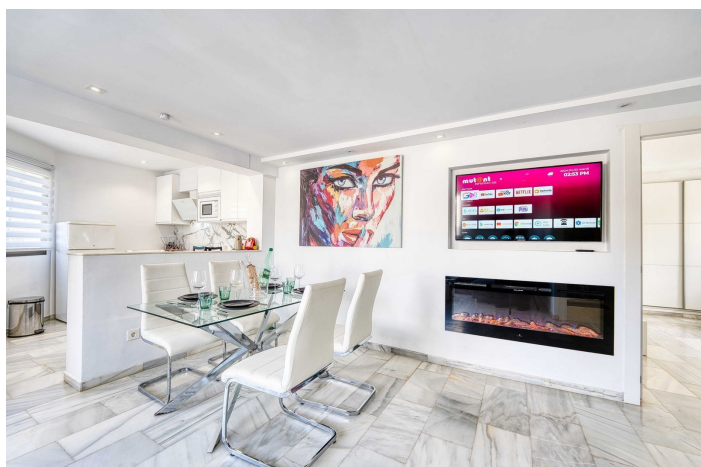




Penthouse for sale in Elviria, Marbella

1.100.000 €

Referencia: R4126801 Dormitorios: 4 Baños: 4 Construido: 180m² Terraza: 60m²





Costa del Sol, Elviria

Great INvestment - return holiday rental 6%-7% per year - 2 AMAZING BEACHFRONT refurbished apartments earn directly income with existing bookings. Situated on top of each other- each 2 bedrooms 2 bathrooms- 2 new kitchen -2 new living dining area - all in modern stylish interior design - perfect for FAMILIES or Couples its like a townhouse on 3 levels but has 2 entrances after main entrance- the APARTMENTS are ONLY 80 METERS FROM THE famous Golden Beach away - between El Rosario and Elviria --1 Floor Apartment : 2 Bedrooms (1. Bedroom double bed 180 cm wide and sofa bed and bathroom with shower - - 2. Bedroom king size bed , with access to the terrace , and ensuite Bathroom 1 Toilette and walk-in shower- - Open Kitchen and Living room with fiber optic internet, large terrace with dining table . 2. FLOOR Duplex PENTHOUSE WITH ROOF TERRACE : 2 BEDROOMs (1. Bedroom Double bed 180cm wide -with sofa bed -2. bedroom 2 single beds) . 2 Bathrooms - TOTAL SLEEPS 12 - 4 Bedrooms, 4 BATHROOMs - 2 LIVING AREAS- 2 KITCHEN- 3 TERRACES - wifi - EXCELLENT beachfront location- About 150 meter to Estrella del Mar Beach Club Bar- and Restaurant with a 5 star Spa, Gym, steam bath, Sauna, Massage, heated pool indoor, heated pool out door (daily ticket extra charge). Another highlight is la Planche Belgium French RESTAURANT IN 100 METER DISTANCE and La Scala Italian Restaurant only 150 meters away. The Urbanization Golden Beach is located on One of the best beaches in Marbella - perfect for family couples - Child friendly 3 POOLS including children pool and play ground . Wonderful tropical garden with seating areas for reading and relaxing Great restaurants right in front on the beach. A Duplex Penthouse of 95 m2 .Perfect for a larger family who are looking for a quiet place and chill out for summer evenings. The apartments are one on top of the other . The highlight of the apartments are the large roof terrace with outdoor lounge bed with amazing sea view mountain view and view to the garden and pool areas . Beachfront apartment complex right next to the beach. Award-winning garden with exotic plants, streams, fountains and two large pools and two children's pools for the youngest children. The apartments consists of 2 kitchens, 2 living rooms, 4 bedrooms (1 queen + 2 single beds and 2 sofa beds in 1st floor appt. and one queen bed and 2 single beds and 2 extra beds in upper floor apt.), 4 bathrooms, private roof terrace. From the terrace you have a beautiful view of the sea - pool and mountains and the spectacular nice garden area. The apartment is just 80 meters from one of Marbella's best and most child-friendly beaches. We have a playground for little children only 40 meters away. Several restaurants, bar coffee , hair dresser , butcher , Pharmacy , bus station and 2 large supermarkets in walking distance . Close to golf and tennis clubs, 8 km to Marbella and 12 km to Puerto Banus. The apartment has everything needed for a comfortable vacation: fully equipped kitchens including dishwashers, washing machines, ironing board . For families with children there is also a cot, high chair and a stroller on request.Composition: 2 kitchen, 4x bedroom, 4x bathroom, 2 Living rooms with Smart TV areas. Amenities: Terrace, air conditioning, heating, swimming pool, bed linen & towels,Beach towels, hairdryer, free wireless internet, free parking on the street, paid cot on request, The Beachclub Estrella del Mar, is next to the Urbanization on the Beach and has a Spa, Gym, Massage, Heated Pool, turkish bath, Wellness, Pilates Courses, Yoga. We have an agreement with them, they give you a 10% discount



Características:

Características

Terraza Cubierta
Terraza Privada
Suelos de Mármol
Armarios Empotrados
Solario
WiFi
Restaurant
Fibra óptica

Vistas

Vistas al Mar
Vistas a Montaña
Vistas Panorámicas
Vistas a Jardín
Vistas a Piscina
Vistas a Playa

Piscina

Piscina Comunitaria
Children`s Pool

Jardín

Jardín Comunitario

Servicios Públicos

Electricidad

Orientación

Orientación Sureste

Posición

Urbanización
Cerca del Mar
Cerca de Colegios
Primera línea de Playa
Complejo 1ª Línea de Playa

Muebles

Completamente Amueblada

Seguridad

Recinto Cerrado
Persianas Eléctricas

Categoría

Casas de vacaciones
Inversion
Frente a la playa
Lujo
Reventa
Contemporáneo

Climatización

Aire Acondicionado
A/A Preinstalado
Chimenea

Estado

Excelente estado de conservación
Reformado Recientemente

Cocina

Cocina Equipada

Aparcamiento

Párking Subterráneo
Párking en Calle