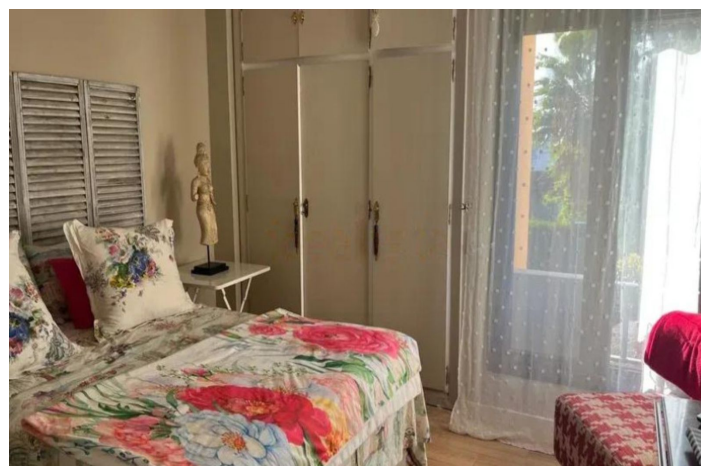




# Apartamento Planta Media en venta en Nueva Andalucía, Marbella

505.000 €

Referencia: R5233738    Dormitorios: 3    Baños: 2    Construido: 100m<sup>2</sup>    Terraza: 20m<sup>2</sup>





---

## Costa del Sol, Nueva Andalucía

Beautiful home just a step away from Puerto Banus and the beach.

It consists of a spacious living-dining room with a fireplace, a fully furnished independent kitchen with a laundry room.

3 spacious bedrooms, one of them with a full bathroom.

Bright and glazed terrace.

Green areas, swimming pool and a large private parking area. Gated community.

Middle Floor Apartment, Nueva Andalucía, Costa del Sol.

3 Bedrooms, 2 Bathrooms, Built 100 m<sup>2</sup>, Terrace 20 m<sup>2</sup>.

Setting : Close To Golf, Close To Shops, Close To Sea, Close To Schools, Close To Marina, Urbanisation.

Orientation : South.

Condition : Good.

Pool : Communal, Children`s Pool.

Climate Control : Air Conditioning, Hot A/C, Cold A/C.

Views : Garden.

Features : Covered Terrace, Lift, Fitted Wardrobes, Near Transport, Private Terrace, WiFi, Utility Room, Ensuite Bathroom, Access for people with reduced mobility, Courtesy Bus, Near Church, Fiber Optic.

Furniture : Part Furnished.

Kitchen : Fully Fitted.

Garden : Communal.

Security : Gated Complex.

Parking : Underground, Garage, Covered, Private.

Category : Resale.



## Características:

### Características

Terraza Cubierta  
Ascensor  
Cerca de Transporte  
Terraza Privada  
Baño En-Suite  
Armarios Empotrados  
WiFi  
Lavadero  
Servicio de Autobuses  
Cerca de una Iglesia  
Fibra óptica  
Access for people with reduced mobility

### Vistas

Vistas a Jardín

### Piscina

Piscina Comunitaria  
Children`s Pool

### Jardín

Jardín Comunitario

### Categoría

Reventa

### Orientación

Sur

### Posición

Cerca de Golf  
Urbanización  
Cerca del Mar  
Cerca de Tiendas  
Cerca de Colegios  
Cerca de Marina

### Muebles

Parcialmente Amueblada

### Seguridad

Recinto Cerrado

### Climatización

Aire Acondicionado  
A/A Frio  
A/A Caliente

### Estado

Buen estado de conservación

### Cocina

Cocina Equipada

### Aparcamiento

Párking Subterráneo  
Garaje  
Párking Privado  
Párking Cubierto