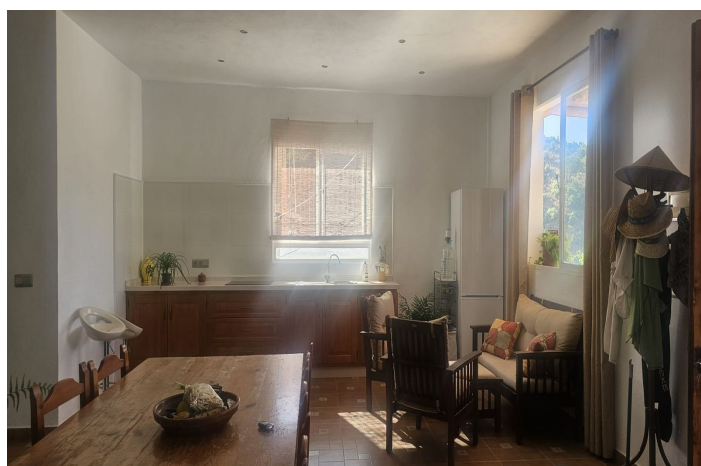




Finca - Rural Estate for sale in Estepona, Estepona

650,000 €

Reference: R5119081 Bedrooms: 3 Bathrooms: 1 Plot Size: 1,473m² Build Size: 107m²





Costa del Sol, Estepona

Finca - Cortijo, Estepona, Costa del Sol. 3 Bedrooms, 1 Bathroom, Built 107 m², Garden/Plot 1473 m². Setting : Country, Close To Sea, Close To Town, Close To Forest, Close To Marina. Orientation : South East. Condition : Good. Climate Control : Air Conditioning, Fireplace. Views : Sea, Mountain, Country, Panoramic, Garden, Forest. Features : Covered Terrace, Fitted Wardrobes, Private Terrace, WiFi, Storage Room, Utility Room, Access for people with reduced mobility. Furniture : Part Furnished. Kitchen : Partially Fitted. Garden : Private. Security : Gated Complex. Parking : More Than One, Private. Category : Cheap, Holiday Homes, Investment, Resale. Charming Rustic Property with a House Surrounded by Nature - Estepona, Guadalobón Area This magnificent rustic estate of 1,580 m² is located in the idyllic natural setting of Guadalobón, Estepona, bordering to the north with the majestic Sierra Bermeja. This unique location offers peace, privacy, and open views—ideal as a holiday retreat, retirement project, or rural investment. Within the plot stands a cozy, recently legalized single-story house with a built area of 107.45 m². The home features an open-plan layout combining the living room, dining area, and kitchen, along with three bedrooms and a bathroom—all designed for comfort and to maximize natural light. The property is crossed by the Capellanía stream, adding a green, picturesque charm to the setting. The remaining unbuilt land is designated as open space, with great potential for landscaping, a vegetable garden, swimming pool, or chill-out area. A truly unique opportunity for those seeking nature, privacy, and authenticity, just minutes from the coast of Estepona.



Features:

Features

Covered Terrace
Private Terrace
Storage Room
Fitted Wardrobes
WiFi
Utility Room
Access for people with reduced mobility

Views

Sea Views
Mountain
Panoramic
Country
Garden
Forest

Furniture

Part Furnished

Security

Gated Complex

Orientation

South East

Setting

Close To Sea
Close To Town
Country
Close To Forest
Close To Marina

Kitchen

Partially Fitted

Parking

Private
More Than One

Climate Control

Air Conditioning
Fireplace

Condition

Good

Garden

Private Garden

Category

Holiday Homes
Investment
Cheap
Resale