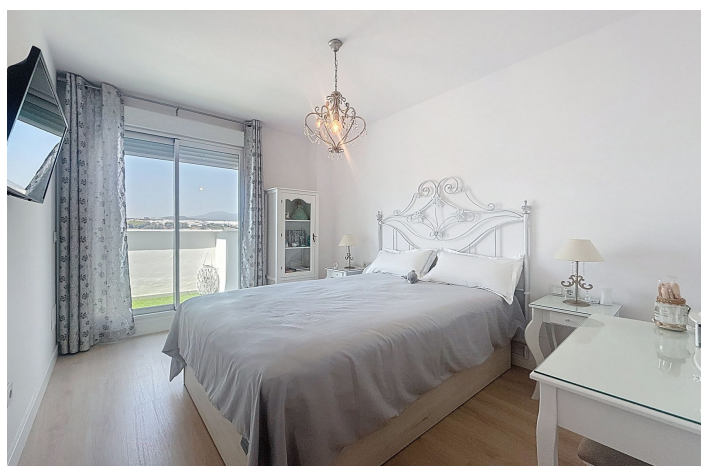
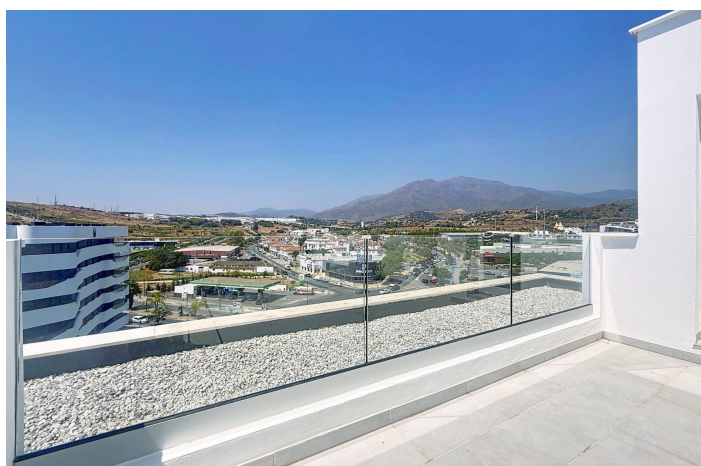




Ático en venta en Estepona, Estepona

895.000 €

Referencia: R5233969 Dormitorios: 3 Baños: 3 Construido: 187m² Terraza: 39m²





Costa del Sol, Estepona

This stylish duplex penthouse is an exceptional find in the heart of Estepona, offering a modern living experience just steps from everything the town has to offer. Situated in a prime residential area, the property enjoys the convenience of being close to shops, schools, cafés, playgrounds, public transport, and within a short walk of the beach, marina, and several golf courses. Spread across 187 m² (with 101 m² of interior space), the home is arranged over two levels and has been thoughtfully designed for comfort and practicality. The main floor includes three well-proportioned bedrooms and two bathrooms – one of them en suite – making it perfect for families or anyone who values extra room. The open-plan kitchen flows elegantly into the living and dining area, connecting directly to a lovely terrace with calming mountain views. The property is sold fully furnished and features air conditioning and an aerothermal system, ensuring both comfort and energy efficiency. Upstairs, the highlight of the home awaits: a private 30 m² solarium, an ideal spot to enjoy the sun, host gatherings, or unwind in complete privacy while taking in the atmosphere of the Costa del Sol. Practicality is also at the forefront, with a laundry room, storage room, private parking space, and the added benefit of an EV charger included. Residents have access to a communal rooftop pool, a fantastic amenity that offers panoramic views and a relaxing space to enjoy warm summer days. Built in 2021 and located on the 7th floor with lift access, the penthouse is in impeccable condition and move-in ready – a rare opportunity for those seeking a contemporary home in one of Estepona's most central and sought-after areas.



Características:

Características

Terraza Cubierta
Ascensor
Cerca de Transporte
Terraza Privada
Trastero - Almacén
Baño En-Suite
Armarios Empotrados
Solario
Suelo de Madera

Vistas

Vistas a Montaña
Vistas Panorámicas
Vistas Urbanas

Piscina

Piscina Comunitaria

Seguridad

Alarma
Persianas Eléctricas
CO2 Emission Rating
C

Orientación

Orientación Noroeste

Posición

Cerca de Puerto
Cerca del Mar
Cerca de Tiendas
Cerca de Ciudad
Cerca de Colegios

Muebles

Completamente Amueblada

Aparcamiento

Parking Privado

Climatización

Aire Acondicionado

Estado

Nueva Construcción

Cocina

Cocina Parcialmente Equipada
Kitchen-Lounge

Calificación energética

C