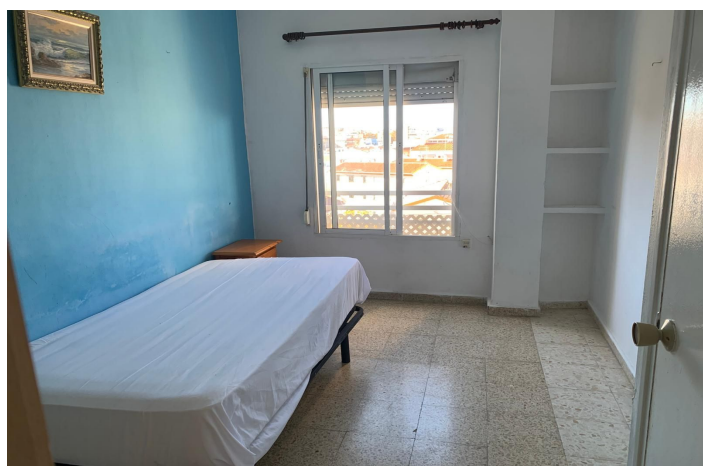




## Middle Floor Apartment for sale in Marbella, Marbella

340,000 €

Reference: R5241808 Bedrooms: 2 Bathrooms: 1 Build Size: 83m<sup>2</sup>





---

## Costa del Sol, Marbella

Please be informed that the pictures do not reflect the current state of the property. It is being reformed (end of January 2026) Imagine awakening each morning to breathtaking 180° panoramic views blending the vibrant cityscape of Marbella, majestic mountains, and a glimpse of the shimmering Mediterranean Sea. This 80 m<sup>2</sup>+ apartment, with its privileged central location just 300 metres from the golden sands of Playa de la Fontanilla and the bustling urban centre, offers an unbeatable blend of convenience and potential. Positioned near the new Marbella Municipal Stadium—currently under renovation to become a 10,000-seat UEFA Category 4 venue by 2026-2027—and the Teatro Ciudad de Marbella (a 480-seat cultural hub hosting theatre, music, dance, flamenco, and opera at Plaza Ramón Martínez), it's surrounded by essential amenities: bus stops right at the door, supermarkets and schools just 25 metres away, plus easy A-7 access for trips to Puerto Banús or Málaga Airport. In a market where Marbella apartments have seen 15% price growth in 2025, this property promises strong investment value with average yields of 6-11% for rentals. Boasting high 2.7m ceilings for an airy feel, this south, east, and west-facing second-floor residence (with lift access) is flooded with natural light and features a practical layout: an entrance hall, two bedrooms with fitted wardrobes, one bathroom, an independent kitchen, a spacious living-dining room, and a 12 m<sup>2</sup> terrace ideal for relaxation. While it requires some modernisation (no gotelé walls, metallic structure allowing for industrial-style exposed beams), it offers immense potential—easily convertible to three bedrooms and two full bathrooms. We have renovation plans to inspire your vision, transforming this into a contemporary haven. This second-hand property in excellent structural condition is ready for your personal touch—don't miss this infinite possibility in an unsurpassable location. Contact us today to arrange a viewing!



## Features:

### Features

Covered Terrace  
Lift  
Near Transport  
Private Terrace  
Utility Room  
Restaurant On Site  
Near Church

### Setting

Commercial Area  
Beachside  
Close To Golf  
Close To Port  
Close To Sea  
Close To Shops  
Close To Schools  
Town  
Close To Marina

### Parking

Street

### Orientation

East  
West

### Condition

Renovation Required

### Views

Mountain  
Panoramic  
Country  
Garden  
Courtyard  
Urban  
Street

### Furniture

Not Furnished