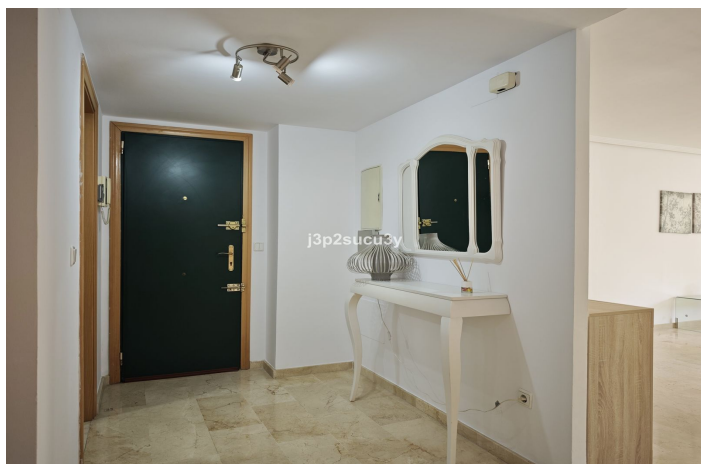




Apartamento Planta Baja en venta en Guadalmina Baja, Marbella

389.900 €

Referencia: R5243941 Dormitorios: 2 Baños: 2 Construido: 113m² Terraza: 26m²





Costa del Sol, Guadalmina Baja

Beautiful apartment located in one of the most prestigious and sought-after areas of Marbella. Located in the exclusive Loma de Guadalmina urbanisation, in Guadalmina Baja, this bright ground floor stands out for its southeast orientation, spaciousness and quiet and safe environment. Thanks to its strategic location, it is possible to walk to San Pedro Alcántara, the beach and the Guadalmina Shopping Center, enjoying total comfort without the need for a car. The area is surrounded by some of the best international schools on the Costa del Sol, such as Laude International School and Colegio San José, both prestigious educational references. Guadalmina Baja is renowned for its exclusivity and excellent connection. It is located just 6 km from Puerto Banús, a few minutes drive from the centre of Marbella and very well connected to the motorway to Malaga and its international airport, located about 50 minutes away. Likewise, the city of Tarifa, popular for its beaches and sports atmosphere, is approximately 1 hour and 15 minutes away, which makes the location an ideal point for getaways in Andalusia. The area is surrounded by iconic golf courses such as the Real Club de Golf Guadalmina, with two 18-hole courses, as well as other prominent Golf Valley clubs, including Aloha, Las Brisas and Los Naranjos. It also offers sports centres, paddle tennis clubs, restaurants, beach bars and a sophisticated and relaxed lifestyle. The flat has a 26 m² terrace, perfect for enjoying the climate and natural light throughout the day. The price includes a garage space of 23 m² and a storage room of 6 m², as well as offering additional parking within the urbanisation for guests or more vehicles, an added value highly appreciated in the area. The community, perfectly maintained, has a swimming pool, large garden areas and a safe and peaceful environment, ideal both as a permanent residence and for investment.



Características:

Características

Terraza Cubierta
Ascensor
Cerca de Transporte
Trastero - Almacén
Baño En-Suite
Suelos de Mármol
Armarios Empotrados
Cerca de una Iglesia
Access for people with reduced mobility

Vistas

Vistas a Jardín
Vistas a Piscina

Piscina

Piscina Comunitaria
Children`s Pool

Jardin

Jardín Comunitario

Servicios Públicos

Electricidad
Agua Potable

CO2 Emission Rating

E

Orientación

Sur

Posición

Área Comercial
Lado de la Playa
Cerca de Golf
Urbanización
Cerca del Mar
Cerca de Tiendas
Cerca de Cuidad
Cerca de Colegios

Muebles

Sin Amueblar

Seguridad

Recinto Cerrado

Categoría

Inversion
Ganga
Golf
Reventa

Climatización

Aire Acondicionado

Estado

Buen estado de conservación

Cocina

Cocina Equipada

Aparcamiento

Párking Subterráneo
Garaje
Párking Comunitario
Calificación energética
E