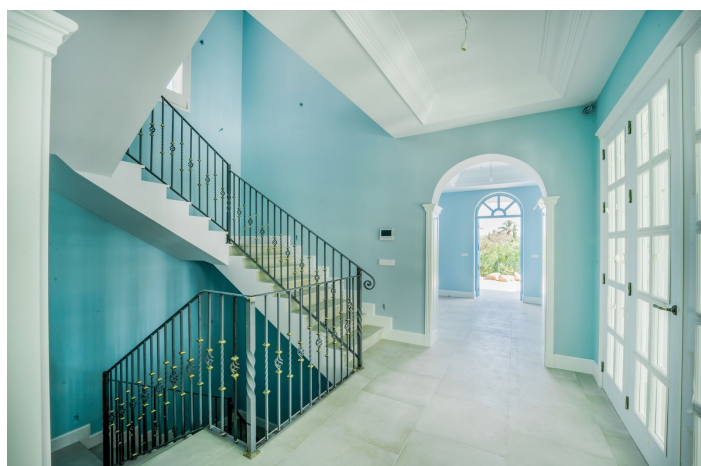




Villa - Chalet en venta en Benahavís, Benahavís

3.700.000 €

Referencia: R4402342 Dormitorios: 6 Baños: 7 Terreno: 4.500m² Construido: 860m²





Costa del Sol, Benahavís

Built in a unique environment this villa is surrounded by green hills of the municipality of Benahavis, famous for its rural beauty. Those who prefer to live in a quiet environment will fall in love with this admirable countryside. It is ideally located close to the five star golf resort - Marbella Club Golf Resort with its outstanding amenities. Here you can play golf every day or enjoy riding a horse. The property features its own charm, elegance and classical architecture combined with Andalusian landscapes. Beauty, privacy, modernity and comfort characterize this south-facing villa. The views from the property are spectacular, overlooking the Mediterranean and the picturesque surroundings. The house is only at 15 minutes away from Marbella and 10 minutes from Puerto Banus. The villa is located in a picturesque area. Living in the house you can always enjoy stunning views. You will not cease to admire the sea views that will open from the windows of the house. Also, the development offers breathtaking panoramic views of golf course, mountains, and green wooden hills. The villa has a 4.500 m2 plot with a swimming pool and solar panels. There are covered terraces on the ground floor. You can use them for a barbecue zone and a lounge area. The house is well proportioned in terms of layout. The villa's interior is particularly elegant. On the ground floor there is a spacious living room. Next to the living room is the dining room and the kitchen, which have access to the covered terrace. Also, on the ground floor there is an office, a gym and Turkish bath. On the second floor there are 4 bedrooms with magnificent views, each with its own bathroom. Entertainment areas are located in the basement of the house. It has a large game room and a separate cinema room.



Características:

Características

Terraza Cubierta
Terraza Privada
Trastero - Almacén
Baño En-Suite
Suelos de Mármol
Doble acristalamiento
Armarios Empotrados
Gimnasio
Sauna
Apptmnt. Huéspedes
Lavadero
Barbacoa
Alojamiento del personal

Vistas

Vistas al Mar
Vistas a Montaña
Vistas Panorámicas
Vistas a Piscina
Vistas a Golf
Vistas a Playa
Vistas a Puerto

Piscina

Habitación para la piscina
Piscina Privada

Jardin

Jardín Privado

Servicios Públicos

Electricidad
Agua Potable

Orientación

Sur

Posición

Cerca de Golf
Cerca de Tiendas
Cerca de Ciudad
Cerca de Colegios
Primera línea de Golf
Ciudad
Cerca de Marina

Muebles

Completamente Amueblada

Seguridad

Seguridad de 24 horas
Alarma
Persianas Eléctricas
Portero Automático
Caja fuerte

Categoría

Inversion
Golf
Lujo

Climatización

Aire Acondicionado
A/A Preinstalado
A/A Frio
A/A Caliente

Estado

Excelente estado de conservación

Cocina

Cocina Equipada

Aparcamiento

Párking Subterráneo
Garaje
Párking Privado
Párking Cubierto