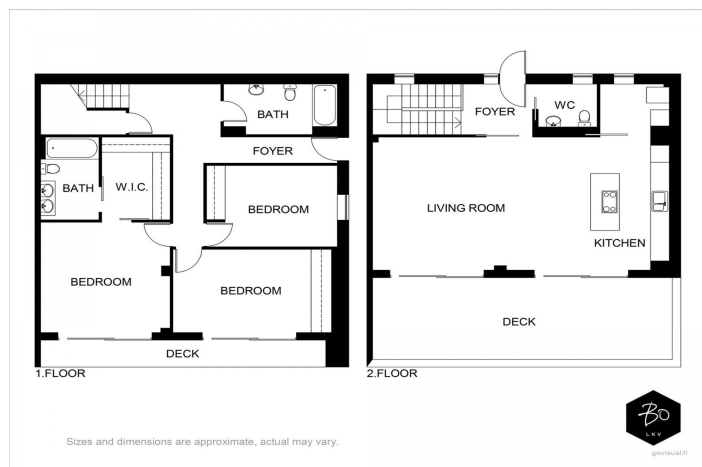




Townhouse for sale in El Chaparral, Mijas

850.000 €

Referencia: R4988206 Dormitorios: 3 Baños: 3 Terreno: 72m² Construido: 175m² Terraza: 28m²




Costa del Sol, El Chaparral

El Chaparral needs little introduction to those familiar with the Costa del Sol. Situated between La Cala de Mijas and Fuengirola, this enchanting, intimate complex is ideally positioned near one of the region's most cherished pastimes: golf. Surrounded by lush greenery at the heart of the Costa del Sol, it offers a perfect fusion of nature, fine dining, and entertainment, within an area celebrated for its vibrant bars, restaurants, and leisure facilities. Just five minutes away, El Chaparral Beach beckons as an idyllic retreat for relaxation with loved ones, offering a diverse range of water sports and beach clubs set against picturesque coves. It's the ideal spot to bask in the Mediterranean climate all year long. This home has been designed to balance style with comfort. The open-plan communal areas and generous interiors are crafted to flood the space with natural light, providing an incredibly inviting living experience. The expansive living room features large picture windows and high-quality porcelain floor tiles, creating an effortlessly bright and airy environment that maximizes daylight throughout the day. The spacious terrace offers panoramic sea views—an ideal setting to unwind and witness breathtaking sunsets. The kitchen flows seamlessly into the living area, contributing to the open, fresh ambiance that's perfect for relaxed, everyday living. Top-tier finishes, including quartz countertops, integrated appliances, and ambient LED lighting, further elevate the space, adding sophistication and warmth. In the bathrooms, large-format porcelain tiles exude elegance, underscoring the attention to detail and commitment to quality design. This is a rare opportunity to own a brand-new townhouse in one of the most sought-after locations on the Costa del Sol.



Características:

Características

Terraza Cubierta
Cerca de Transporte
Terraza Privada
Baño En-Suite
Doble acristalamiento
Armarios Empotrados
WiFi
Domotica

Fibra óptica

Vistas

Vistas al Mar
Vistas a Jardín
Vistas a Calle

Piscina

Piscina Comunitaria

Aparcamiento

Parking Cubierto

CO2 Emission Rating

B

Orientación

Sur

Posición

Cerca de Golf
Cerca de Puerto
Cerca del Mar
Cerca de Tiendas
Cerca de Ciudad
Cerca de Colegios

Jardin

Jardín Privado

Servicios Públicos

Teléfono

Climatización

Aire Acondicionado
Baño

Estado

Nueva Construcción

Seguridad

Recinto Cerrado
Persianas Eléctricas
Portero Automático
Calificación energética
B