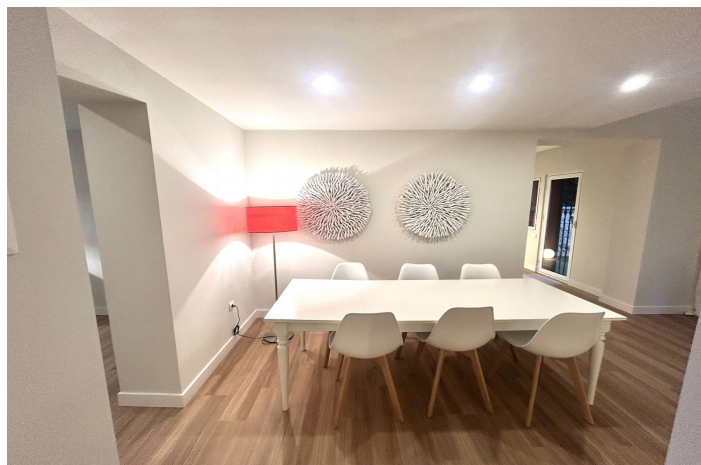




Pareada en venta en Atalaya, Estepona

690.000 €

Referencia: R5251573 Dormitorios: 4 Baños: 3 Terreno: 250m² Construido: 285m² Terraza: 100m²





Costa del Sol, Atalaya

Large house ready to go in to live; From the beautiful front garden and through a stone staircase you access the entrance of the house open to a large living room with fireplace that has plenty of light all day as it is south orientation; on this floor there is also a separate kitchen, with small dining room, that gives the access garden, a guest toilet and a small extra room perfect for office, or for room to play, from which you pass to the private garage covered with The house is the Lomas de Monte Biarritz one of the most beautiful and well-kept urbanizations in the area; On the first floor there are 3 bedrooms, the master with en-suite bathroom, closet area and access to two terraces one of them huge solarium type; , the other two rooms also have fitted wardrobes and share another bathroom; the house has a more attic floor where a small room is located with a large terrace that enjoys wide views. The house has recently been completely renovated by architects; so this list to enter to live and by its orientation, has a lot of light all day; the community is very well maintained and managed. It has large and beautiful gardens and 2 swimming pools, one of adults and another of children; It is a perfect house for families with children, since there is a lot of atmosphere; and it is perfect for living all year round; since it is next to all services: The Guadalmina Shopping Centre also the Atalaya and San José schools in Guadalmina are next to it; Call us and we teach you!!



Características:

Características

Terraza Cubierta
Cerca de Transporte
Terraza Privada
Suelos de Mármol
Doble acristalamiento
Armarios Empotrados
Solario
Sala de Juegos
Lavadero
Suelo de Madera

Vistas

Vistas Panorámicas
Vistas al Campo
Vistas a Jardín
Vistas a Piscina

Piscina

Piscina Comunitaria

Jardín

Jardín Privado

Orientación

Sur

Posición

Cerca de Golf
Cerca de Puerto
Cerca del Mar
Cerca de Tiendas
Cerca de Ciudad
Cerca de Colegios

Muebles

Sin Amueblar

Seguridad

Recinto Cerrado
Persianas Eléctricas

Climatización

Chimenea

Estado

Buen estado de conservación
Excelente estado de conservación
Reformado Recientemente
Nueva Construcción

Cocina

Cocina Parcialmente Equipada

Aparcamiento

Parking Privado