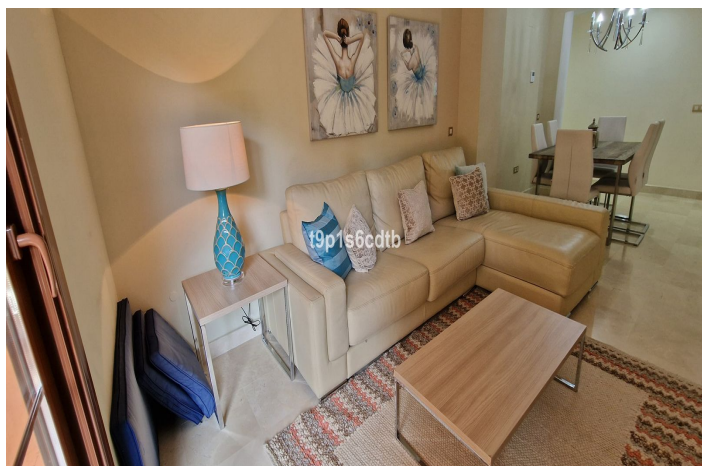




Apartamento Planta Baja en venta en Benahavís, Benahavís

499.000 €

Referencia: R5255485 Dormitorios: 3 Baños: 2 Terreno: 150m² Construido: 152m² Terraza: 45m²





Costa del Sol, Benahavís

IDEAL AS REGULAR RESIDENCE, SECOND HOME, AND/OR INVESTMENT.

This charming 3-bedroom apartment, placed on the ground floor with a large surrounding garden, in a gated community with 24-hour security, is perfect for families with children and those who wish to enjoy all the amenities in a quiet residential community, close to all kinds of amenities, Golf courses, the beach, Banús and Marbella. Ideally situated within easy walking distance of the Atalaya International School, wellknown supermarket and close to the country style village of Benahavis.

This property features 3 bedrooms, 2 bathrooms (one en suite with the master bedroom), a large living/dining room, spacious kitchen with utility room and outdoor terrace, plus a covered terrace with access to the garden surrounding the property. It includes hot/cold air conditioning, satellite TV, and fiber optic Wi-Fi. 1 private parking space and storage room.

The community offers exceptional amenities: mature landscaped gardens, 3 outdoor swimming pools, heated indoor pool & gym, a paddle tennis court, and a spa with saunas and changing rooms, providing a resort-style lifestyle at a few minutes from golf courses, schools, supermarkets, restaurants, and all the amenities of the Marbella and Estepona coast, as well as Banús and the town of Benahavís.



Características:

Características

Terraza Cubierta
Ascensor
Terraza Privada
TV Satélite
Trastero - Almacén
Baño En-Suite
Suelos de Mármol
Doble acristalamiento
Armarios Empotrados
WiFi
Gimnasio
Paddle Tennis
Fibra óptica

Vistas

Vistas a Jardín

Piscina

Piscina Comunitaria
Piscina Cubierta

Jardin

Jardín Comunitario

Servicios Públicos

Electricidad
Agua Potable

Orientación

Orientación Noreste
Orientación Noroeste

Posición

Cerca de Golf
Urbanización
Cerca de Tiendas
Cerca de Ciudad
Cerca de Colegios

Muebles

Opcionales

Seguridad

Recinto Cerrado
Seguridad de 24 horas
Portero Automático

Categoría

Casas de vacaciones
Inversion
Golf
Lujo
Reventa

Climatización

Aire Acondicionado
A/A Frio
A/A Caliente

Estado

Buen estado de conservación

Cocina

Cocina Equipada

Aparcamiento

Párking Subterráneo
Garaje
Párking Privado
Párking Cubierto