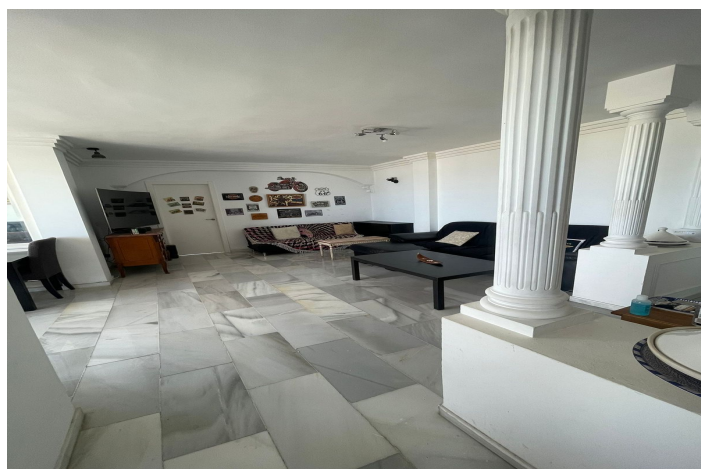




Penthouse for sale in Benalmadena Costa, Benalmádena

699,000 €

Reference: R4763356 Bedrooms: 3 Bathrooms: 2 Build Size: 155m² Terrace: 100m²





Costa del Sol, Benalmadena Costa

NEW TO THE MARKET! LOCATION - LOCATION- LOCATION! BENALMADENA - PUERTO MARINA We are delighted to bring to you this wonderful 3 bedroom - 2 bathroom Penthouse, investment opportunity - Benalmadena - Puerto Marina. The apartment is just a 2 minutes walk to the beach and Puerto Marina, where there is an endless supply of Bars, Restaurants, Cafes, Supermarkets and Beauty salons and, of course, the beautiful beaches. The Penthouse property, occupies the whole top floor of the building. Because of not having any neighbours, the property has an unrivalled - panoramic sea view of the Marina and the Mediterranean sea, including all the local attractions such as the Ferris wheel, beaches and surrounding landmarks. The views are simply breathtaking! The large terrace is 70 square metres and wraps around the whole of the front and both sides of the apartment. The best thing; the views can never be taken away from the property due to the property being situated directly behind the Puerto Marina that has been built and established for years. No buildings can be built in front of the property, guaranteeing the views forever. The penthouse consists of 3 double sized bedrooms, all with built in wardrobes. Two of the bedrooms have the most amazing views through the large glazed windows, which lead onto the terrace. One of the large bedrooms have their own en-suite bathroom. The living room is bright and airy, due to the high ceilings and large patio doors leading to the wonderful terrace, which lets in ample light. The fully equipped kitchen is separate from the living room. From the kitchen you have amazing views overlooking the sea and marina. The air conditioning, for cooling and heating, is centralised throughout the whole property. The penthouse has a private parking space in the underground car park. This is a must see Penthouse!



Features:

Features

Covered Terrace
Lift
Near Transport
Private Terrace
Satellite TV
Storage Room
Ensuite Bathroom
Marble Flooring
Double Glazing
Fitted Wardrobes
Solarium
Utility Room
Barbeque
Fiber Optic
Access for people with reduced mobility

Views

Sea Views
Panoramic
Pool
Beach
Port

Furniture

Fully Furnished

Parking

Underground
Garage
Private
Covered

Orientation

South
South East
South West

Setting

Close To Golf
Close To Port
Urbanisation
Close To Sea
Close To Shops
Close To Town
Close To Schools
Beachfront
Port
Marina
Close To Marina

Kitchen

Fully Fitted

Utilities

Electricity
Drinkable Water
Telephone

Climate Control

Air Conditioning
Cold A/C
Hot A/C
Central Heating

Condition

Fair
Renovation Required

Security

Gated Complex
Alarm System
Electric Blinds
Entry Phone

Category

Holiday Homes
Investment
Beachfront
Resale