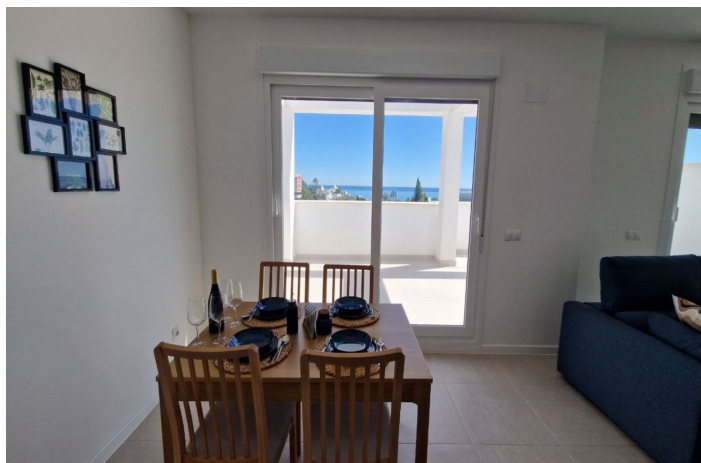
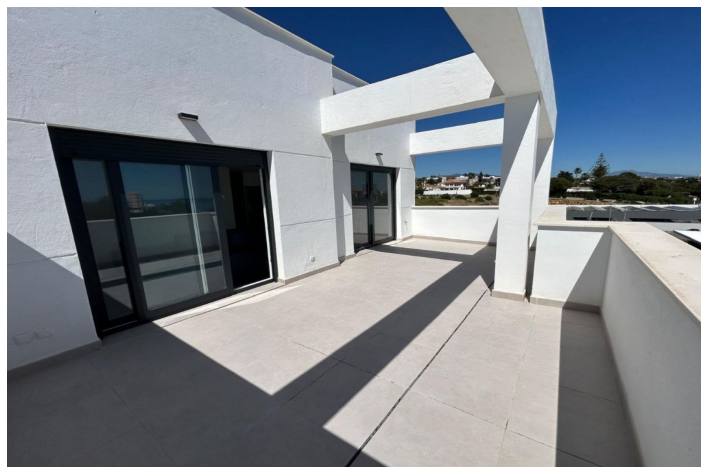




## Penthouse for sale in Estepona, Estepona

595,000 €

Reference: R5002348 Bedrooms: 2 Bathrooms: 2 Build Size: 76m<sup>2</sup> Terrace: 26m<sup>2</sup>





---

## Costa del Sol, Estepona

Welcome to this stunning corner penthouse in the exclusive “Sea Views” by Via Célere, a brand-new development in the sought-after area of Estepona West. This 2-bedroom, 2-bathroom residence offers an unparalleled coastal lifestyle, boasting breathtaking panoramic sea views from its elevated position.

Step inside to discover a light-filled open-plan living space, where floor-to-ceiling windows frame the endless blue of the Mediterranean. The apartment has been tastefully furnished with brand-new, high-quality pieces, ensuring a sophisticated and stylish ambiance. Every detail has been carefully curated to provide both comfort and elegance, and as this home has never been lived in, you will be the very first to enjoy its pristine condition.

The master suite features its own en-suite bathroom and built-in wardrobes.

The second bedroom is equally well-appointed, perfect for guests or a home office. Both bathrooms are finished with premium materials.

The highlight of this penthouse is its expansive private terrace, where you can relax, dine, and soak in the spectacular sunset views over the sea. Whether enjoying your morning coffee or entertaining under the stars, this outdoor space is designed for unforgettable moments.

Located in a contemporary, high-end community, “Sea Views” offers luxury amenities, including a swimming pool, landscaped gardens, a fitness center, and social areas. Just minutes from the beach, golf courses, and the charming town of Estepona, this is a rare opportunity to experience brand-new coastal living at its finest.

A true gem on the Costa del Sol—ready for you to move in and make it your own!



## Features:

### Features

Lift  
Near Transport  
Private Terrace  
Storage Room  
Ensuite Bathroom  
Double Glazing  
Fitted Wardrobes  
Gym  
Utility Room  
Barbeque  
Access for people with reduced mobility

### Views

Sea Views  
Panoramic  
Garden  
Pool  
Street

### Pool

Communal  
Children`s Pool

### Garden

Communal

### Utilities

Electricity  
Telephone

### Orientation

South

### Setting

Beachside  
Close To Port  
Urbanisation  
Close To Sea  
Close To Shops  
Close To Town  
Close To Schools  
Close To Forest  
Close To Marina

### Furniture

Part Furnished

### Security

Gated Complex  
24 Hour Security  
Entry Phone  
Safe

### Category

Holiday Homes  
Investment  
Luxury  
Resale  
Contemporary

### Climate Control

Air Conditioning  
Cold A/C  
Hot A/C

### Condition

Excellent  
New Construction

### Kitchen

Fully Fitted

### Parking

Underground  
Private  
Covered