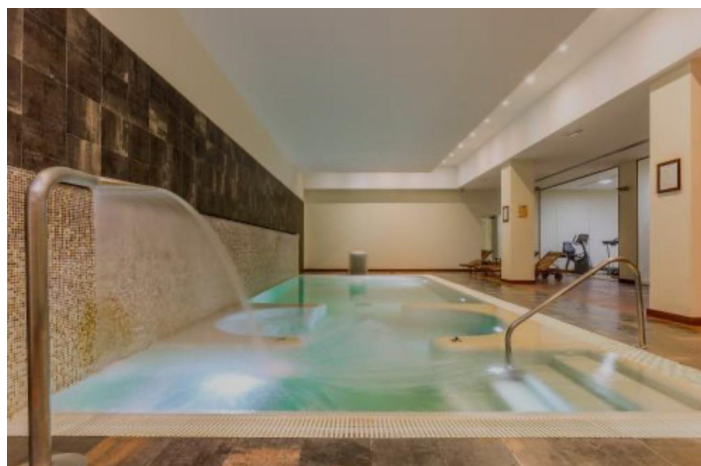
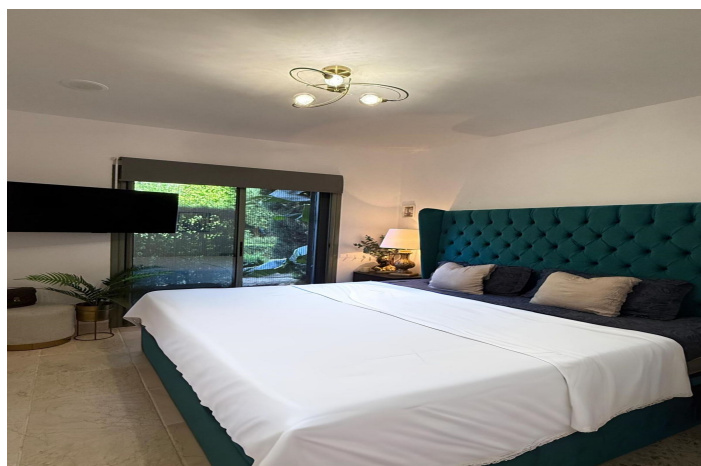




Apartment mit mittlerer Etage zum Verkauf in Estepona, Estepona

500.000 €

Referenz: R5253628 Schlafzimmer: 2 Badezimmer: 2 Garten: 140m² Terrasse: 41m²





Costa del Sol, Estepona

Presenting an elegant, recently built apartment located in the prestigious Benatalaya development, in the eastern area of Estepona, Málaga. Boasting a privileged frontline golf location and surrounded by all necessary amenities, this property stands out for its comfort and excellent connectivity to public transport as well as the main commercial, educational, and leisure areas of the city.

The apartment, with a built area of 140 m² (99 m² of interior space and 41 m² of a spacious private terrace), offers 2 bedrooms and 2 full bathrooms. The interior is characterized by its brightness and functional layout, featuring a spacious living room, fully equipped kitchen, built-in wardrobes, and high-quality finishes such as double-glazed windows and electric shutters.

Residents enjoy an array of extraordinary amenities within a gated and secure community, including outdoor and indoor communal swimming pools, gym, sauna, jacuzzi, mature landscaped gardens, and a nearby children's playground. The entrance is equipped with a concierge, elevator, and adapted access, as well as communal garage and storage room. Security is ensured through 24-hour surveillance and assistance, as well as an access control system.

This property represents an excellent opportunity for those seeking a high quality of life next to the golf course, surrounded by well-maintained gardens and a tranquil atmosphere, without sacrificing proximity to restaurants, schools, and shops. Its excellent condition, golf and garden views, and location close to all amenities make this apartment an ideal option both as a permanent residence and as an investment.



Eigenschaften:

Merkmale

Überdachte Terrasse
Aufzug
In der Nähe des Transports
Private Terrasse
Lagerraum
Doppelverglasung
Einstellungsschränke
Fitnessstudio
Sauna
Whirlpool

Ansichten

Garten
Golf

Pool

Gemeinschaft
Innenräume

Garten

Gemeinschaft

Kategorie

Golf

Orientierung

West

Einstellung

In der Nähe von Geschäften
In der Nähe von Schulen

Möbel

Nicht eingerichtet

Sicherheit

Gated Complex
24 -Stunden -Sicherheit
Elektrische Jalousien

Klimakontrolle

Klimaanlage
Zentralheizung

Zustand

Exzellent

Neubau

Küche

Teilweise montiert

Parken

Gemeinschaft