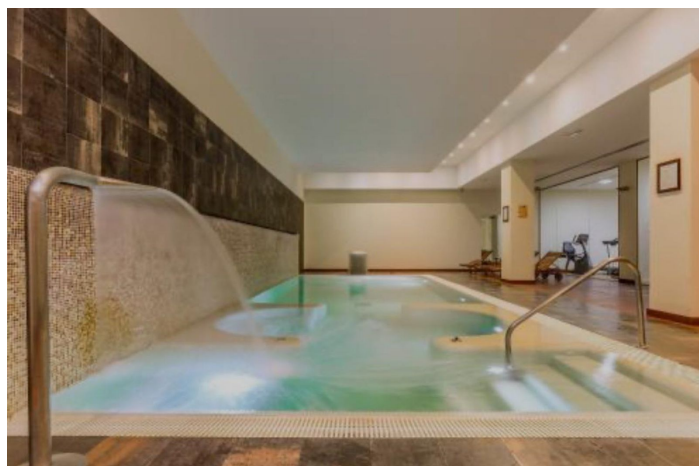
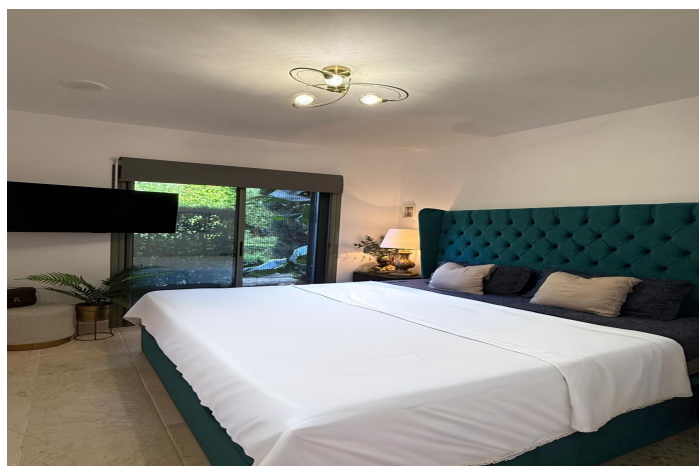




Apartamento Planta Media en venta en Estepona, Estepona

500.000 €

Referencia: R5253628 Dormitorios: 2 Baños: 2 Construido: 140m² Terraza: 41m²





Costa del Sol, Estepona

Presenting an elegant, recently built apartment located in the prestigious Benatalaya development, in the eastern area of Estepona, Málaga. Boasting a privileged frontline golf location and surrounded by all necessary amenities, this property stands out for its comfort and excellent connectivity to public transport as well as the main commercial, educational, and leisure areas of the city.

The apartment, with a built area of 140 m² (99 m² of interior space and 41 m² of a spacious private terrace), offers 2 bedrooms and 2 full bathrooms. The interior is characterized by its brightness and functional layout, featuring a spacious living room, fully equipped kitchen, built-in wardrobes, and high-quality finishes such as double-glazed windows and electric shutters.

Residents enjoy an array of extraordinary amenities within a gated and secure community, including outdoor and indoor communal swimming pools, gym, sauna, jacuzzi, mature landscaped gardens, and a nearby children's playground. The entrance is equipped with a concierge, elevator, and adapted access, as well as communal garage and storage room. Security is ensured through 24-hour surveillance and assistance, as well as an access control system.

This property represents an excellent opportunity for those seeking a high quality of life next to the golf course, surrounded by well-maintained gardens and a tranquil atmosphere, without sacrificing proximity to restaurants, schools, and shops. Its excellent condition, golf and garden views, and location close to all amenities make this apartment an ideal option both as a permanent residence and as an investment.



Características:

Características

Terraza Cubierta
Ascensor
Cerca de Transporte
Terraza Privada
Trastero - Almacén
Baño En-Suite
Doble acristalamiento
Armarios Empotrados
Gimnasio
Sauna
Jacuzzi

Vistas

Vistas a Jardín
Vistas a Golf

Piscina

Piscina Comunitaria
Piscina Cubierta

Jardín

Jardín Comunitario

Categoría

Golf

Orientación

Oeste

Posición

Cerca de Tiendas
Cerca de Colegios
Muebles
Sin Amueblar

Seguridad

Recinto Cerrado
Seguridad de 24 horas
Persianas Eléctricas

Climatización

Aire Acondicionado
Calefacción Central.

Estado

Excelente estado de conservación
Nueva Construcción

Cocina

Cocina Parcialmente Equipada

Aparcamiento

Párking Comunitario