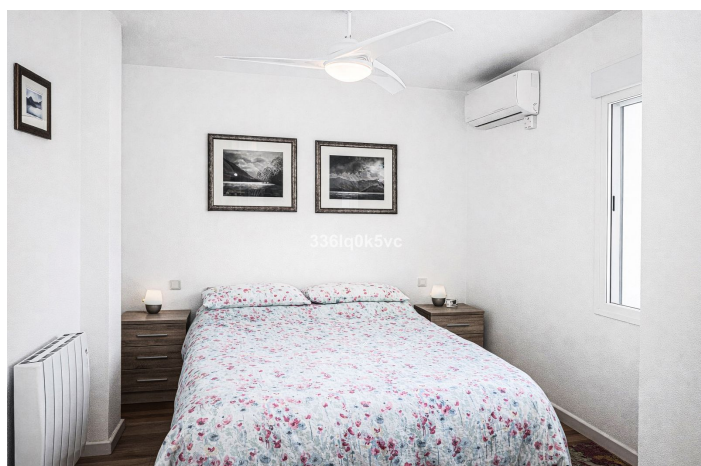
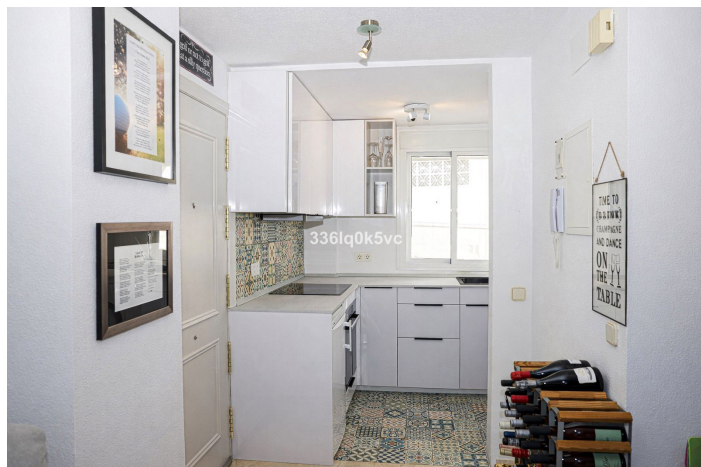




Ático en venta en Benahavís, Benahavís

320.000 €Referencia: R5258848 Dormitorios: 2 Baños: 2 Construido: 75m² Terraza: 15m²



Costa del Sol, Benahavís

Luxury Penthouse with 2 Bedrooms and 2 Bathrooms in the Heart of Benahavís Village

Discover this beautiful penthouse located in the charming village of Benahavís, known for its picturesque streets, excellent restaurants and peaceful natural surroundings. The property offers two spacious bedrooms and two modern bathrooms, including a stylish newly renovated en-suite bathroom in the master bedroom.

The fully renovated kitchen is equipped with quality appliances, and the entire apartment benefits from new window frames with high-efficiency glass for optimal comfort and insulation. New air-conditioning units have also been installed throughout the apartment, including both bedrooms, ensuring a pleasant indoor climate all year round.

From the penthouse you can enjoy stunning views of the surrounding mountains and countryside. Sports and outdoor activities are close by, making this the perfect location for lovers of hiking, golf and nature. The building features a lift and includes a private parking space and storage room — a real advantage within the village.

About Benahavís Village

Benahavís is one of the most desirable and authentic whitewashed villages on the Costa del Sol. Often referred to as the “gastronomic village” of the region, it is renowned for its many high-quality restaurants and tapas bars. Surrounded by mountains, rivers and lush valleys, Benahavís offers a serene natural environment while still being just a short drive from Marbella, Puerto Banús and the coast. It is a safe, friendly community with a relaxed lifestyle and true Andalusian charm.

This penthouse is the ideal home for anyone seeking quality, comfort and a beautiful setting.



Características:

Características

Ascensor
Terraza Privada
Trastero - Almacén
Baño En-Suite
Suelos de Mármol
Armarios Empotrados
Suelo de Madera

Vistas

Vistas a Montaña
Vistas Panorámicas

Piscina

Piscina Comunitaria

Seguridad

Portero Automático

Orientación

Orientación Noreste

Posición

Cerca de Tiendas
Pueblo
Pueblo de Montaña

Muebles

Opcionales

Aparcamiento

Parking Subterráneo
Parking Privado

Climatización

Aire Acondicionado
A/A Frio
A/A Caliente

Estado

Excelente estado de conservación

Cocina

Cocina Equipada

Categoría

Casas de vacaciones
Inversion