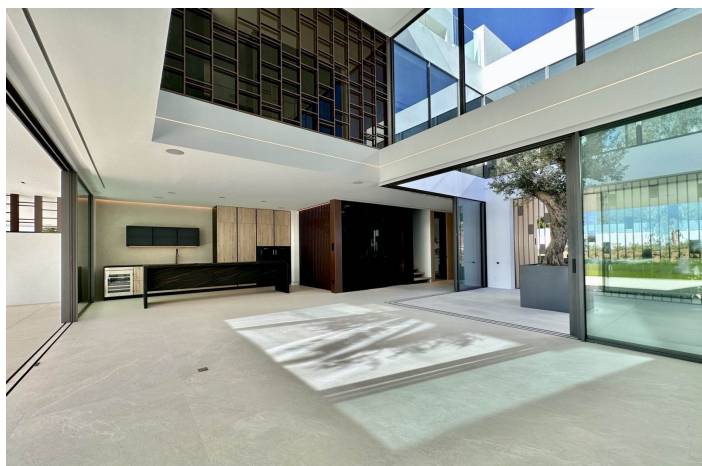
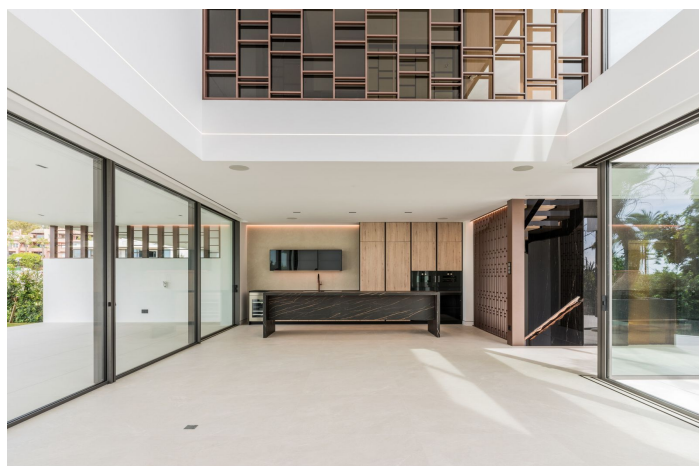




## Semi-Detached House for sale in Nueva Andalucía, Marbella

5.250.000 €

Referenz: R4749622 Schlafzimmer: 4 Badezimmer: 5 Grundstücksgröße: 154m<sup>2</sup> Garten: 442m<sup>2</sup> Terrasse: 235m<sup>2</sup>





---

## Costa del Sol, Nueva Andalucía

Brand new Villa located in a heart of Nueva Andalucia, Marbella. Walking distance to Puerto Banus and all amenities, close to Aloha Golf Club & Las Brisas Golf Club, and just 1,5 km from the beach. Houses were built in 2024. The residential is completely gated and private, counting with a spectacular entrance, which gives access to 6 impressive "Vilas" with state-of-the-art design. Within the entrance we can find the reception and the security guard post. The extensive outdoor spaces and gardens around the "Vilas", give way to a new concept of swimming pool of almost 180 m2 plus a 36 m2 children's pool, both with chlorination water treatment. The beautifully built Villa on 4 levels offers high quality, stylish and bright living room open to the large and elegant terrace. All 3 bedroom suites include floor-to-ceiling windows, a sleek minimalist kitchen. All 4 levels are connected by a modern elevator. Terraces leading out to a private area of garden – as well as having access to the beautifully landscaped communal gardens and swimming pool. Roof terrace with private swimming pool and outdoor cinema. A customizable basement provides ample space for a home gym, an additional bedroom or room for any other use, such as an office. Villa 6.2 has a parking space for 4 cars within the communal underground parking area. Due to its orientation and position, the entire complex enjoys natural light most of the day, and Villa is completely filled of luminosity through its incredible windows as well as through the "Central courtyard". It is also a fact that the residents will be able to enjoy the most incredible sunrises and sunsets from the spacious terraces.



## Eigenschaften:

### Merkmale

Überdachte Terrasse  
Aufzug  
In der Nähe des Transports  
Doppelverglasung  
24 -ständiger Empfang  
Einstellungsschränke  
Solarium  
Versorgungsraum  
Domotik  
Keller

### Einstellung

Gewerbegebiet  
In der Nähe von Golf  
In der Nähe des Hafens  
Urbanisierung  
In der Nähe des Meeres  
In der Nähe von Geschäften  
In der Nähe der Stadt  
In der Nähe von Schulen

### Möbel

Nicht eingerichtet

### Sicherheit

Gated Complex  
24 -Stunden -Sicherheit

### Orientierung

Südwesten

### Zustand

Exzellent  
Neubau

### Küche

Voll ausgestattet

### Parken

Unterirdisch  
Privat  
Mehr als eins

### Klimakontrolle

Klimaanlage  
U/f Heizung

### Pool

Gemeinschaft  
Erhitzt  
Privat  
Kinderpool

### Garten

Gemeinschaft  
Privat

### Kategorie

Ferienhäuser  
Investition  
Schnäppchen  
Golf  
Luxus  
Wiederverkauf  
Zeitgenössisch