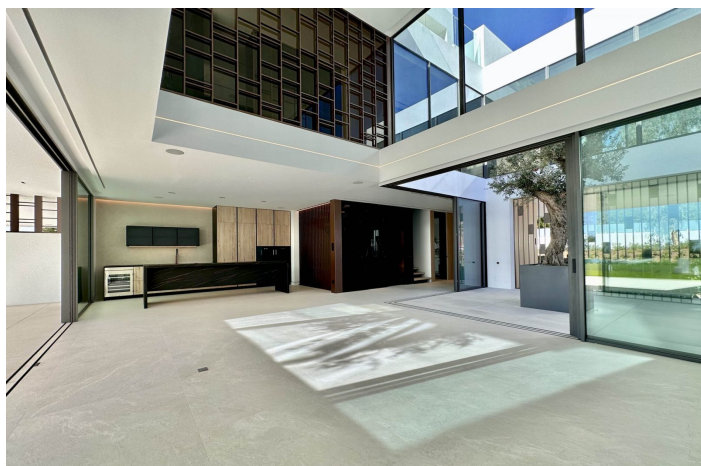
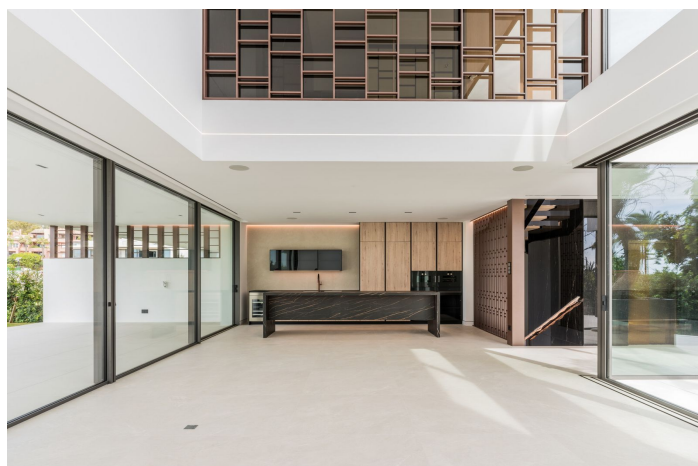




Semi-Detached House for sale in Nueva Andalucía, Marbella

5.000.000 €

Referencia: R4749622 Dormitorios: 4 Baños: 5 Terreno: 154m² Construido: 442m² Terraza: 235m²





Costa del Sol, Nueva Andalucía

Brand new Villa located in a heart of Nueva Andalucia, Marbella.

Walking distance to Puerto Banus and all amenities, close to Aloha Golf Club & Las Brisas Golf Club, and just 1,5 km from the beach.

Houses were built in 2024.

The residential is completely gated and private, counting with a spectacular entrance, which gives access to 6 impressive "Vilas" with state-of-the-art design. Within the entrance we can find the reception and the security guard post.

The extensive outdoor spaces and gardens around the "Vilas", give way to a new concept of swimming pool of almost 180 m2 plus a 36 m2 children's pool, both with chlorination water treatment.

The beautifully built Villa on 4 levels offers high quality, stylish and bright living room open to the large and elegant terrace.

All 3 bedroom suites include floor-to-ceiling windows, a sleek minimalist kitchen. All 4 levels are connected by a modern elevator.

Terraces leading out to a private area of garden – as well as having access to the beautifully landscaped communal gardens and swimming pool.

Roof terrace with private swimming pool and outdoor cinema.

A customizable basement provides ample space for a home gym, an additional bedroom or room for any other use, such as an office.

Villa 6.2 has a parking space for 4 cars within the communal underground parking area.

Due to its orientation and position, the entire complex enjoys natural light most of the day, and Villa is completely filled of luminosity through its incredible windows as well as through the "Central courtyard". It is also a fact that the residents will be able to enjoy the most incredible sunrises and sunsets from the spacious terraces.



Características:

Características

Terraza Cubierta
Ascensor
Cerca de Transporte
Doble acristalamiento
24 Horas Recepción
Armarios Empotrados
Solario
Lavadero
Domotica
Sótano

Posición

Área Comercial
Cerca de Golf
Cerca de Puerto
Urbanización
Cerca del Mar
Cerca de Tiendas
Cerca de Ciudad
Cerca de Colegios

Muebles

Sin Amueblar

Seguridad

Recinto Cerrado
Seguridad de 24 horas

Orientación

Orientación Suroeste

Estado

Excelente estado de conservación
Nueva Construcción

Cocina

Cocina Equipada

Aparcamiento

Parking Subterráneo
Párking Privado
More Than One

Climatización

Aire Acondicionado
Suelo Radiante

Piscina

Piscina Comunitaria
Con Calefacción
Piscina Privada
Children`s Pool

Jardin

Jardín Comunitario
Jardín Privado

Categoría

Casas de vacaciones
Inversion
Ganga
Golf
Lujo
Reventa
Contemporáneo