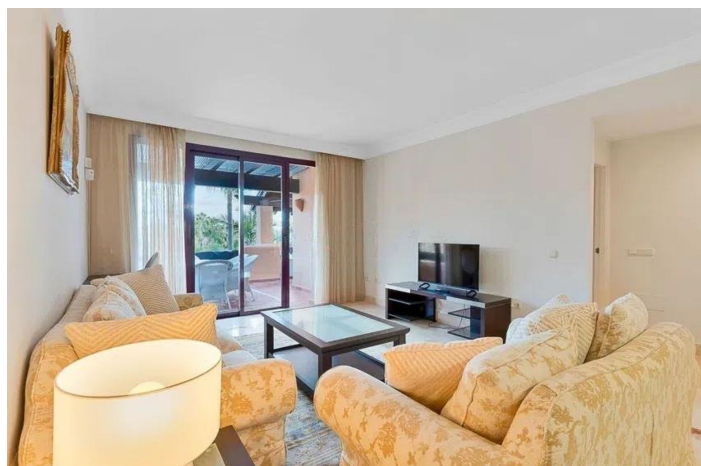
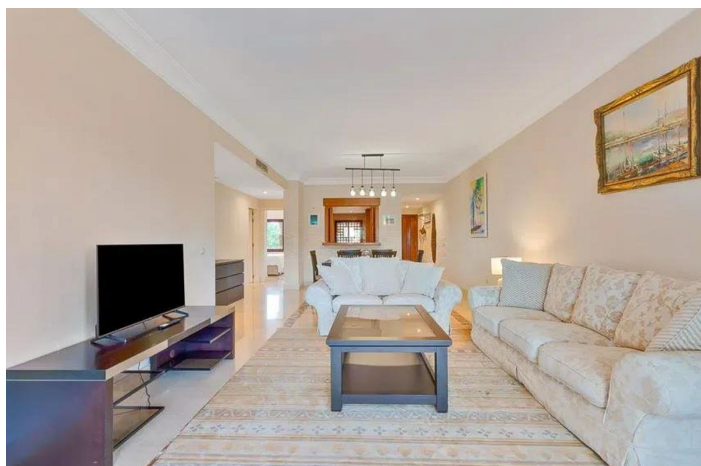
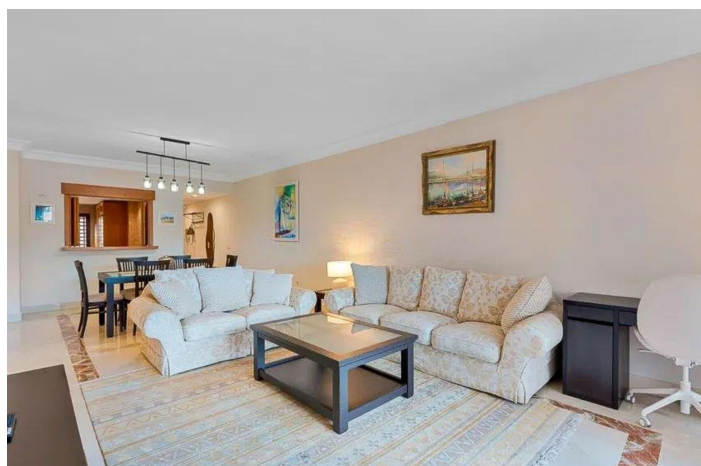
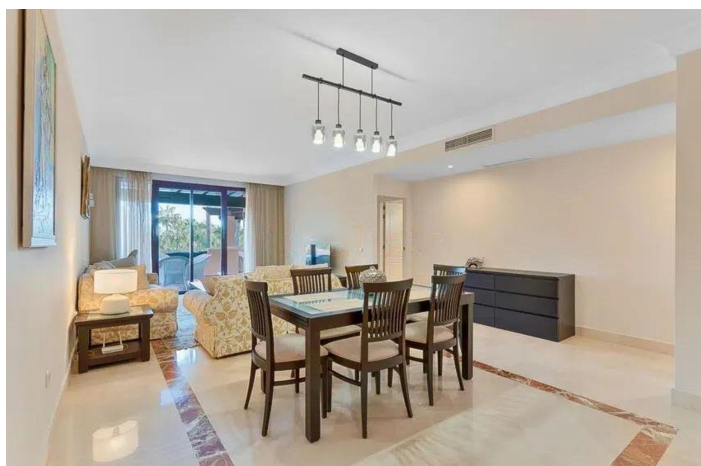




## Apartamento Planta Media en venta en San Pedro de Alcántara, San Pedro de Alcántara

875.000 €

Referencia: R5286829    Dormitorios: 2    Baños: 2    Construido: 112m<sup>2</sup>    Terraza: 40m<sup>2</sup>





---

## Costa del Sol, San Pedro de Alcántara

Elegant apartment by the sea, located in an exclusive residential development just a few meters from the promenade and the beach, in one of the most sought-after areas of San Pedro de Alcántara. A bright and well-maintained home, ideal for enjoying the Mediterranean lifestyle in total comfort. Located on the second floor with elevator access and southeast orientation, the apartment receives abundant natural light throughout most of the day. The covered terrace offers pleasant views of the gardens and communal pool, with the sea in the background, creating a peaceful and relaxing atmosphere. The interior is distributed into a spacious living-dining room with direct access to the terrace, a fully equipped separate kitchen, and two bedrooms with two full bathrooms, both with bathtubs and underfloor heating. The bedrooms have built-in wardrobes and a serene atmosphere, perfect for relaxation. It includes an underground parking space and storage room. The development is gated, with 24-hour security, concierge service, well-kept gardens, and a large communal swimming pool. Its location is unbeatable, just a few steps from the beach, restaurants, and all amenities, with Puerto Banús and Marbella just a few minutes' drive away. An excellent choice both as a primary residence and as a seaside investment.



## Características:

### Características

Terraza Cubierta

Ascensor

Terraza Privada

Trastero - Almacén

### Piscina

Piscina Comunitaria

### Climatización

Aire Acondicionado

### Jardin

Jardín Comunitario

### Posición

Lado de la Playa

Cerca de Golf

Cerca del Mar

Primera línea de Playa

### Aparcamiento

Párking Subterráneo

Garaje

Párking Privado

Párking Cubierto

### Categoría

Inversion

Frente a la playa