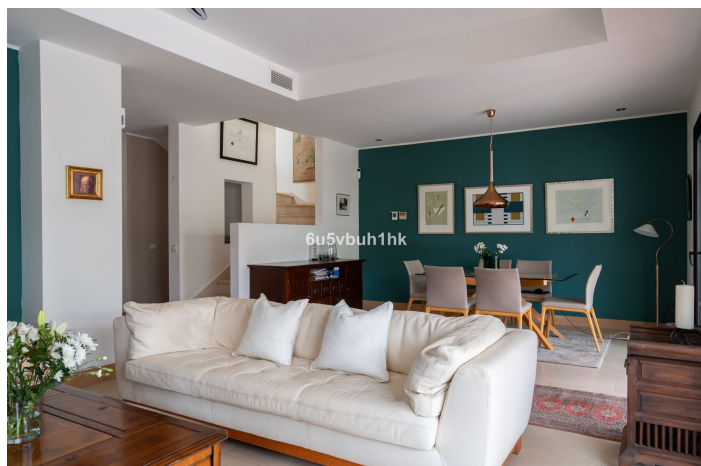
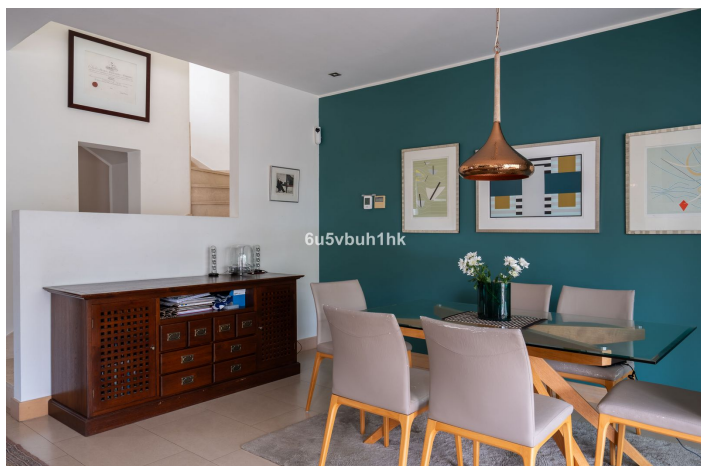




## Semi-Detached House for sale in Benalmadena Pueblo, Benalmádena

799,000 €

Reference: R5292487   Bedrooms: 3   Bathrooms: 2   Plot Size: 467m<sup>2</sup>   Build Size: 285m<sup>2</sup>   Terrace: 104m<sup>2</sup>





---

## Costa del Sol, Benalmadena Pueblo

Nestled in the charming heart of Benalmádena Pueblo, this elegant 285 m<sup>2</sup> semi-detached house blends comfort, space, and unforgettable views. Step into a warm living room with a cozy fireplace, a bright dining area, and a spacious kitchen—perfect for family life and entertaining. There are on the top floor three comfortable bedrooms with wardrobes from ceiling to floor, two spacious bathrooms and terrace, and on the first floor additionally a guest toilet. The home offers exceptional outdoor living: two spacious terraces, a big patio, and a 110 m<sup>2</sup> private garden. Relax by your private pool while admiring serene mountain views and Castillo Colomares. Enjoy the sea view from the front terrace and bedroom. Additional features include a large multifunctional basement with natural light, big laundry room, storage room and a carport for two cars. A beautiful blend of tranquility, style, and Andalusian charm— the house is waiting for new owners. A home that truly has it all. Contact us for a viewing!



## Features:

### Features

Covered Terrace  
Near Transport  
Private Terrace  
Storage Room  
Ensuite Bathroom  
Fitted Wardrobes  
WiFi  
Utility Room  
Jacuzzi  
Barbeque  
Near Church  
Basement  
Fiber Optic

### Views

Sea Views  
Mountain  
Panoramic  
Garden

### Pool

Private Pool

### Garden

Private Garden

### Utilities

Electricity

Drinkable Water

### CO2 Emission Rating

D

### Orientation

West  
South West

### Setting

Close To Golf  
Urbanisation  
Close To Shops  
Close To Town  
Close To Schools

### Furniture

Optional

### Security

Gated Complex  
Alarm System  
Electric Blinds

### Category

Contemporary

### Climate Control

Air Conditioning  
Cold A/C  
Hot A/C  
Fireplace

### Condition

Good

### Kitchen

Fully Fitted

### Parking

Private  
Covered  
More Than One  
Energy Rating  
D