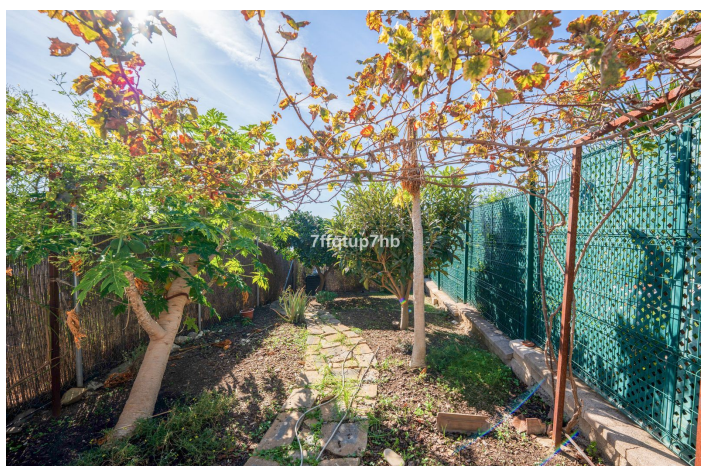
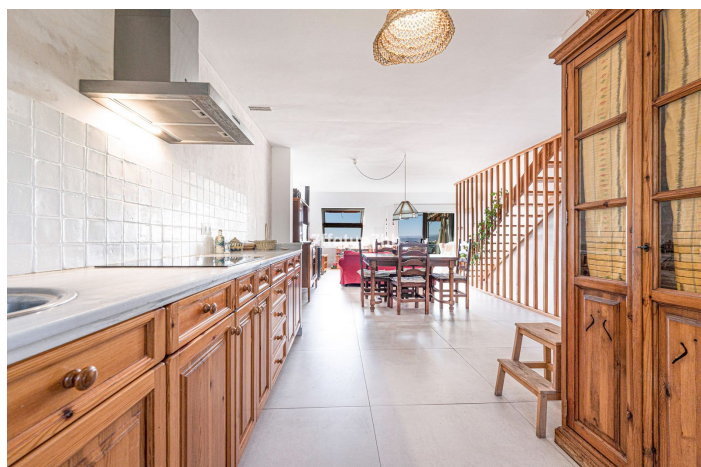
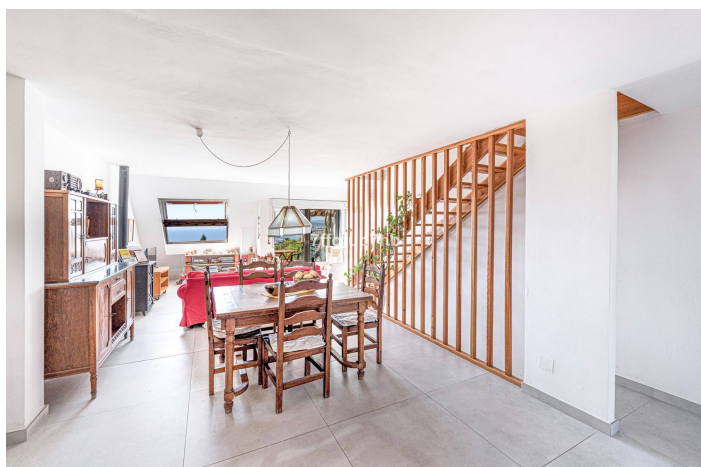




Adosada en venta en Estepona, Estepona

548.000 €

Referencia: R5293558 Dormitorios: 4 Baños: 2 Construido: 133m² Terraza: 25m²





Costa del Sol, Estepona

This spacious townhouse is located in the sought-after Seghers area of Estepona, a highly desirable enclave thanks to its proximity to the town centre, the marina, and the charming Playa del Cristo. The property boasts breathtaking panoramic views of the sea and Gibraltar, while its south-facing orientation ensures exceptional natural light throughout the day, creating warm, inviting spaces and a wonderful sense of openness in every corner. The home features three generous bedrooms, an attic space, one full bathroom and a guest toilet, as well as a large open-plan living area with a kitchen and lounge designed to enhance comfort, fluidity, and a feeling of spaciousness in everyday living. It also includes a remarkably large basement, perfect for additional storage, a games room, a gym, or any use you may wish to give it. One of the most enchanting elements of this property is its private garden, a delightful outdoor haven where lemon trees, fig trees, pomegranate trees, and other fruit varieties flourish, bringing freshness and a truly Mediterranean atmosphere. It is the ideal spot to enjoy outdoor living, whether with family or in peaceful moments of relaxation. The development belongs to an intimate community of just 15 homes, surrounded by beautifully maintained communal gardens that provide a serene and harmonious setting. Nearby, you will find parks, schools, sports facilities, and a wide range of services, making daily life easier and ensuring excellent connectivity to all essential amenities in Estepona. Thanks to its proximity to the sea, its incomparable views, and the prestige of the area, this townhouse represents an exceptional opportunity—both as a permanent residence and as an investment in one of the most desirable areas of the Costa del Sol.



Características:

Características

Cerca de Transporte
Terraza Privada
TV Satélite
Trastero - Almacén
Armarios Empotrados
WiFi
Sótano

Vistas

Vistas al Mar
Vistas Panorámicas
Vistas a Jardín

Muebles

Completamente Amueblada
Opcionales

Aparcamiento

Parking Privado
Parking Comunitario
More Than One

Orientación

Sur

Posición

Cerca de Puerto
Cerca del Mar
Cerca de Ciudad
Cerca de Colegios
Puerto
Cerca de Marina

Cocina

Cocina Equipada

Servicios Públicos

Paneles Solares Térmicas

Climatización

Aire Acondicionado

Estado

Necesita Reformas
Reformado Recientemente

Jardín

Jardín Privado
Jardín de fácil mantenimiento