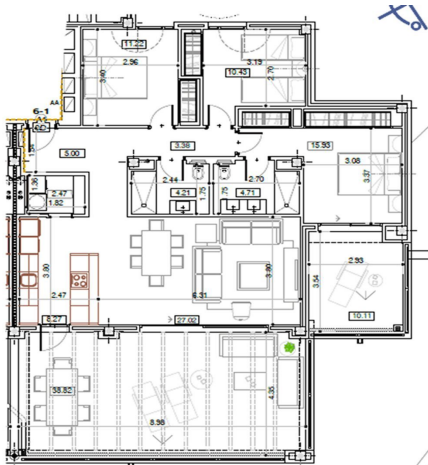




Middle Floor Apartment for sale in Nueva Andalucía, Marbella

795,000 €

Reference: R5293786 Bedrooms: 3 Bathrooms: 2 Build Size: 163m² Terrace: 53m²





Costa del Sol, Nueva Andalucía

Superb Elevated Corner 3-Bedroom 2-bath Contemporary Apartment with 2 separate balconies set within the sought-after Marbella Lake Development in the Golf Valley.

With Panoramic Views of the Lake below, as well as views to the Mediterranean Sea, and the iconic La Concha mountain, this beautifully positioned apartment enjoys an exceptional elevated outlook that delivers true luxury living. Built in 2023, it is as new.

As an end corner apartment, you have no buildings next to you, just the lake, giving a high level of privacy.

The apartment features 2 South-Easterly facing balconies:

The large, expansive covered main terrace provides the perfect setting for entertaining, dining, or relaxing, while taking in sweeping open views.

The private uncovered balcony, off the master bedroom, offers a more intimate retreat, ideal for morning coffee or daytime sun.

The Apartment is a ground floor elevated apartment, so you have the feeling of a middle floor apartment without neighbours below and a view directly to the lake.

The apartment benefits from 2 private parking spaces and a large storage unit, with direct elevator access connecting the parking level to the apartment, ensuring everyday convenience.

From these elevated vantage points, the property enjoys open, uninterrupted views across the lake as well as the Mediterranean coastline, and the iconic La Concha mountain, creating a rare and highly desirable visual combination.

As a modern, recently completed development, Marbella Lake offers contemporary construction standards and a refined community atmosphere with pools at every level.

Ideally located, the apartment is within a five-minute drive of Nueva Andalucía's renowned golf courses, multiple tennis and sports facilities, and enjoys excellent access to shops, restaurants, and everyday amenities – all while remaining peaceful, private, and elevated above the valley.

Property Dimensions

Total Built in Nota Simple: 164,14m²

Apartment: 110m²

Terrace: 53m²

A rare opportunity to combine views, convenience, and flexibility in one of Marbella's most desirable residential enclaves.

Details are correct to the best of our knowledge, but subject to verification.



Features:

Features

Covered Terrace
Lift
Private Terrace
Storage Room
Ensuite Bathroom
Fitted Wardrobes
Utility Room

Views

Sea Views
Mountain
Lake
Forest

Pool

Communal

Garden

Communal

Category

Holiday Homes
Investment
Luxury

Orientation

South East

Setting

Close To Golf
Urbanisation

Furniture

Optional

Security

Gated Complex
Entry Phone

Climate Control

Air Conditioning

Condition

Excellent

Kitchen

Fully Fitted

Parking

Underground
More Than One