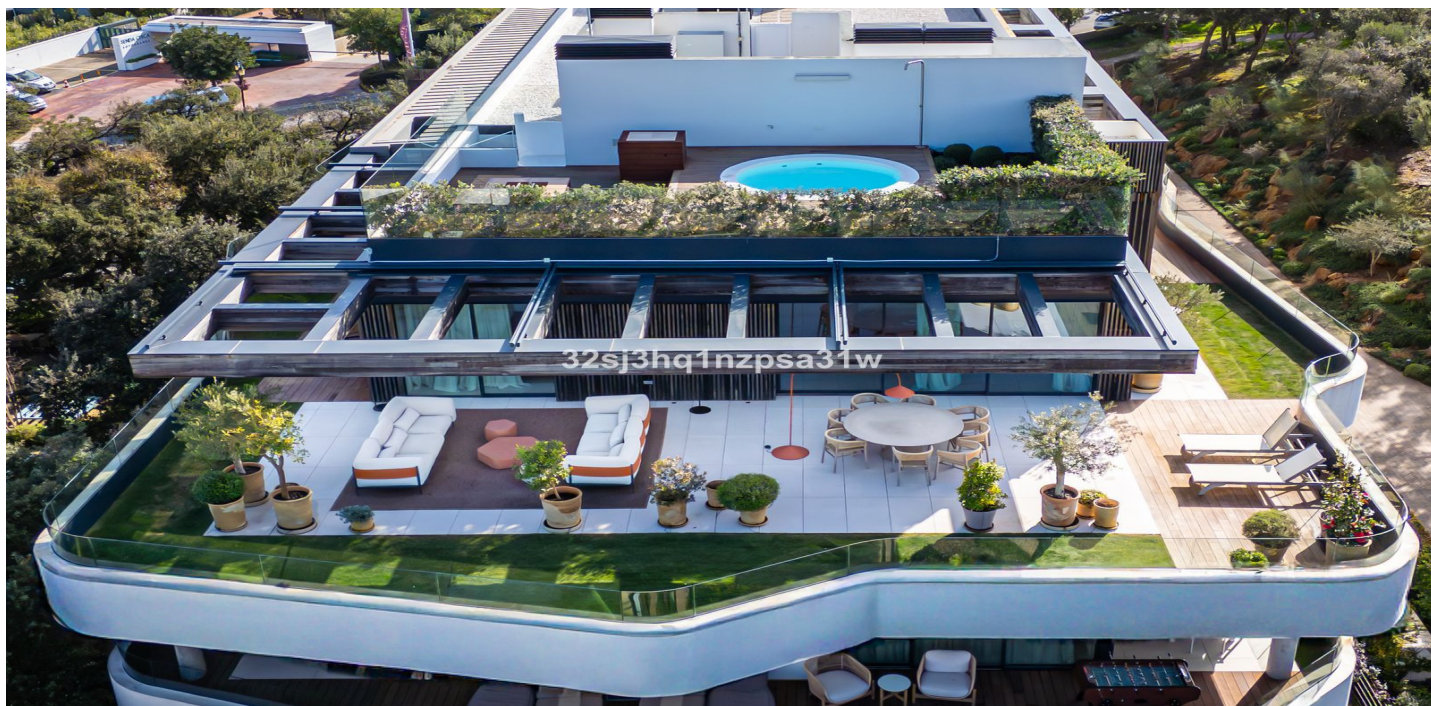




Penthouse for sale in Sotogrande, Sotogrande

2,950,000 €

Reference: R5289580 Bedrooms: 4 Bathrooms: 5 Build Size: 248m² Terrace: 346m²





Costa de la Luz, Sotogrande

Exceptional penthouse in Village Verde - La Reserva Sotogrande This exceptional four-bedroom penthouse in Village Verde represents the pinnacle of luxury living in La Reserva de Sotogrande. The residence features 209 m² of sophisticated internal space and a monumental 346 m² wrap-around terrace and solarium, including a private plunge pool and firepit. Each spacious bedroom includes a private en-suite bathroom, complemented by a guest powder room, laundry area, and direct lift access. This brand-new home is a benchmark for sustainability, holding a prestigious A/A Energy Certificate and meeting rigorous BREEAM and WELL standards. Residents enjoy an unrivaled lifestyle within a secure, car-free community featuring multiple outdoor pools, a professional indoor lap pool, and a signature sandy-bottom pool. Wellness is central to the community, with a state-of-the-art gym, spa, sauna, and private gastro-bar. The immense popularity of the adjacent La Reserva Club provides further access to world-class golf and "The Beach"—Spain's first hillside private beach lagoon. Sotogrande remains one of Europe's most discreet and prestigious enclaves, attracting an elite international clientele to its vibrant Marina, the legendary fairways of Valderrama, and the world-class Santa María Polo Club. Families benefit from the nearby acclaimed Sotogrande International School, while the location offers effortless connectivity to Gibraltar Airport (25 mins) and Málaga Airport (60 mins). This vertical villa offers the perfect balance of Mediterranean luxury and privacy.



Features:

Features

Covered Terrace
Lift
Near Transport
Private Terrace
Satellite TV
Storage Room
Ensuite Bathroom
Double Glazing
24 Hour Reception
Fitted Wardrobes
Solarium
WiFi
Gym
Sauna
Paddle Tennis
Tennis Court
Jacuzzi
Domotics
Restaurant On Site
Near Mosque
Near Church
Fiber Optic
Access for people with reduced mobility

Views

Sea Views
Mountain
Panoramic
Garden
Golf
Forest

Pool

Communal
Heated
Indoor
Private Pool
Children`s Pool

Garden

Communal
Landscaped

Orientation

West
South West

Setting

Close To Golf
Close To Port
Urbanisation
Close To Sea
Close To Shops
Close To Town
Close To Schools
Frontline Golf
Close To Forest
Close To Marina

Furniture

Optional

Security

Gated Complex
24 Hour Security

Climate Control

Air Conditioning
Central Heating

Condition

Excellent
New Construction

Kitchen

Fully Fitted
Kitchen-Lounge

Parking

Underground
Garage



Utilities

- Electricity
- Telephone
- Gas

- Alarm System
- Electric Blinds
- Entry Phone
- Safe

Category

- Golf
- Luxury
- Resale
- Contemporary

- Private
- Covered
- Communal
- More Than One