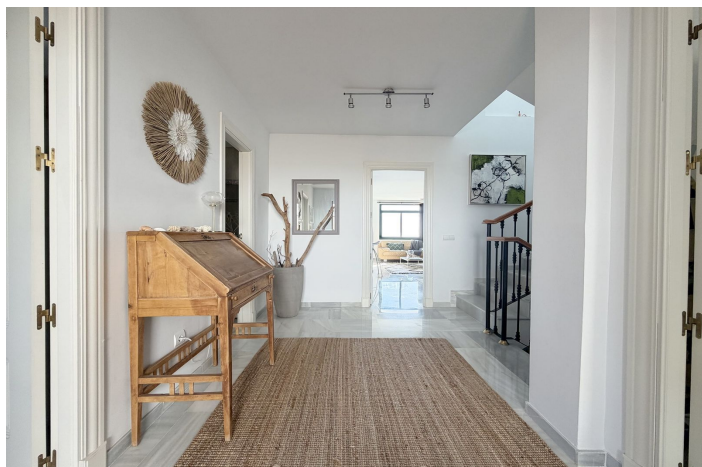




## Pareada en venta en Benalmadena Pueblo, Benalmádena

629.000 €

Referencia: R5296219    Dormitorios: 3    Baños: 2    Construido: 122m<sup>2</sup>    Terraza: 188m<sup>2</sup>





---

## Costa del Sol, Benalmadena Pueblo

Magnificent semi-detached house located in the exclusive Mirador de Rancho Domingo residential area, in Benalmádena Pueblo, a recently renovated property with a modern style offering stunning panoramic views of the sea and the mountains, set in a peaceful and well-connected residential environment. The property is distributed in a very functional way. On the main floor, there are two bedrooms, a full bathroom, and a spacious living area with a recently renovated open-plan kitchen, featuring a modern design and direct access to a covered terrace, from which you can enjoy panoramic sea and mountain views. On the lower floor, you will find the master bedroom, with an en-suite bathroom and direct access to a terrace with a private 90 m<sup>2</sup> garden, an ideal space for relaxing, entertaining, or enjoying outdoor living. This level also includes a storage room and a fully enclosed private garage with direct access to the house, providing maximum comfort and security. On the top floor, the property boasts a spectacular 60 m<sup>2</sup> solarium, offering open panoramic views of the sea and the mountains. All terraces are enclosed with glass curtains, including part of the solarium, allowing these outdoor spaces to be enjoyed all year round, even during the winter months. The house has been renovated with a modern and elegant style, combining comfort, design, and functionality throughout. The residential complex features a communal swimming pool and beautifully maintained gardens, within a quiet and secure environment. The location is excellent: just 10 minutes by car from the beach and 15 minutes from Málaga International Airport, with easy access to all kinds of amenities such as restaurants, shops, pharmacies, health centre, sports facilities, and schools. An ideal property as a permanent residence or holiday home, offering comfort, style, and truly exceptional sea and mountain views.



## Características:

### Características

Terraza Cubierta  
Terraza Privada  
Trastero - Almacén  
Baño En-Suite  
Suelos de Mármol  
Solario

### Vistas

Vistas al Mar  
Vistas a Montaña  
Vistas Panorámicas

### Piscina

Piscina Comunitaria

### Seguridad

Recinto Cerrado

### Orientación

Orientación Sureste

### Posición

Cerca de Golf  
Urbanización  
Cerca de Tiendas  
Cerca de Colegios

### Cocina

Cocina Equipada

### Aparcamiento

Garaje  
Párking Privado  
Párking Cubierto

### Climatización

Aire Acondicionado

### Estado

Excelente estado de conservación

### Jardin

Jardín Privado