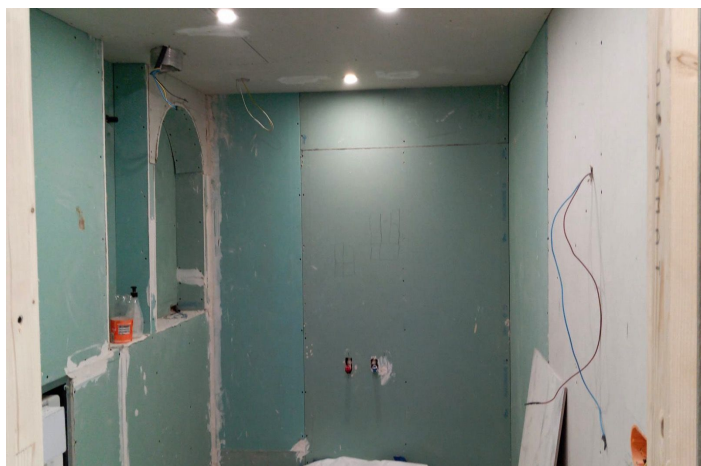
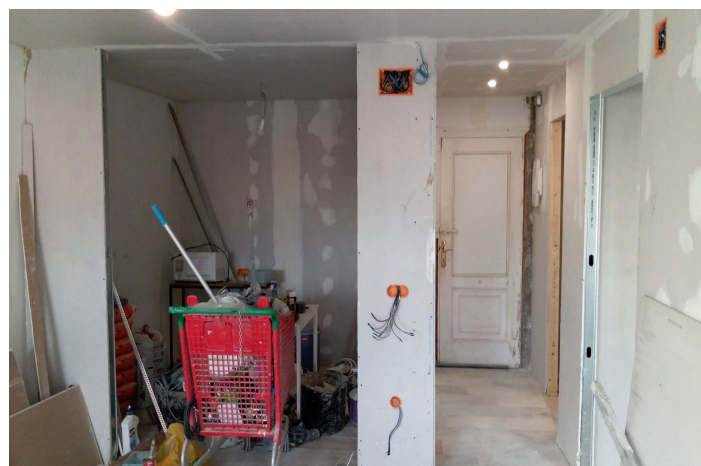




Apartment mit mittlerer Etage zum Verkauf in Puerto Banús, Marbella

520.000 €

Referenz: R5296324 Schlafzimmer: 2 Badezimmer: 1 Garten: 79m²





Costa del Sol, Puerto Banús

Prime Apartment in the Heart of Puerto Banús, Marbella – Frontline Beach Location with Endless Potential!

Seize this exceptional opportunity to own a 79 m² apartment in the glamorous epicentre of Puerto Banús, Marbella's iconic luxury marina on the Costa del Sol – renowned for its opulent yachts, supercars, and celebrity sightings. Steps from the golden sands of Playa de Levante and Playa del Duque, this frontline beach property immerses you in a vibrant lifestyle surrounded by high-end designer boutiques (Louis Vuitton, Gucci, Dolce & Gabbana), upscale shopping centres like Marina Banus and El Corte Inglés, Michelin-starred restaurants, trendy beach clubs, and pulsating nightlife. Perfectly positioned along the famous Golden Mile, it's just a short stroll to gourmet dining, exclusive lounges, and the marina's jet-set atmosphere, with easy access to Marbella's Old Town, world-class golf courses, and attractions like the Fly Blue Catamaran rides.

Currently undergoing reforms, this second-hand gem on the second floor (with lift) offers two bedrooms, one bathroom, a kitchen, living room, and a charming small balcony overlooking the bustling main street of Banús – ideal for people-watching in this affluent hotspot. North-facing for cooler, comfortable living, it presents a blank canvas to finish to your personal taste, blending modern luxury with the area's Andalusian charm.

Priced at €520,000 – a rare chance to invest in Puerto Banús' high-demand market, whether as a holiday retreat, permanent residence, or lucrative rental property.



Eigenschaften:

Merkmale

Aufzug

In der Nähe des Transports

Marmorböden

Doppelverglasung

In der Nähe der Kirche

Zugang für Menschen mit reduzierter

Mobilität

Ansichten

Garten

Hof

Urban

Straße

Orientierung

Norden

Klimakontrolle

Vor installierte a/c

Einstellung

Gewerbegebiet

Strand

In der Nähe des Hafens

In der Nähe des Meeres

In der Nähe von Geschäften

In der Nähe der Stadt

In der Nähe von Schulen

Strand

Stadt

Hafen

Yachthafen

In der Nähe von Marina

Front Line Beach Complex

Küche

Nicht angepasst

Zustand

Renovierung erforderlich

Möbel

Nicht eingerichtet

Kategorie

Strand

Parken

Straße