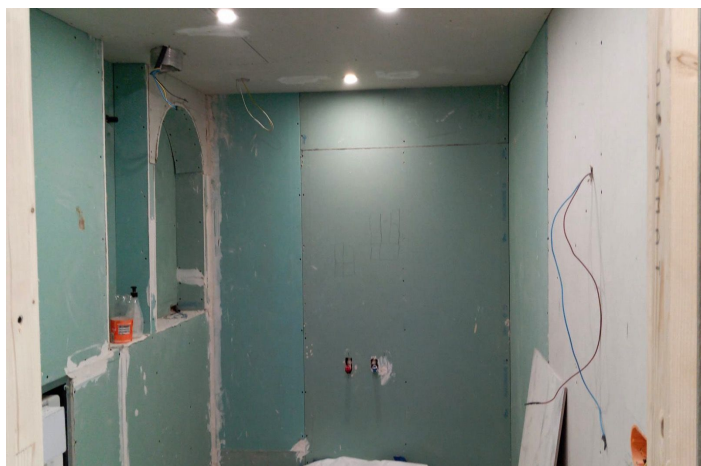
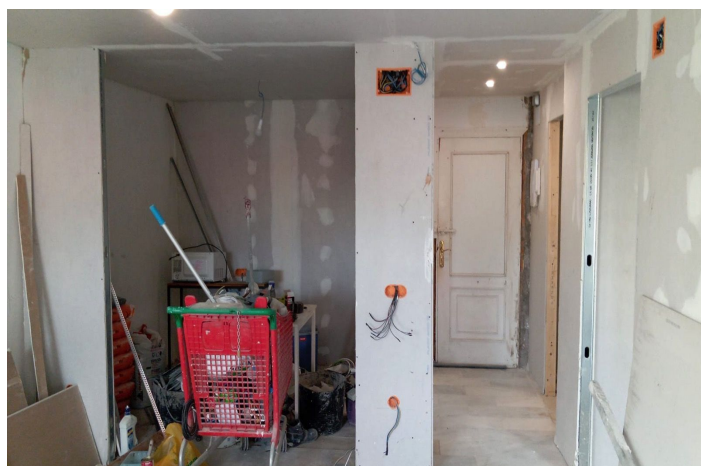




Middle Floor Apartment for sale in Puerto Banús, Marbella

520,000 €

Reference: R5296324 Bedrooms: 2 Bathrooms: 1 Build Size: 79m²





Costa del Sol, Puerto Banús

Prime Apartment in the Heart of Puerto Banús, Marbella – Frontline Beach Location with Endless Potential!

Seize this exceptional opportunity to own a 79 m² apartment in the glamorous epicentre of Puerto Banús, Marbella's iconic luxury marina on the Costa del Sol – renowned for its opulent yachts, supercars, and celebrity sightings. Steps from the golden sands of Playa de Levante and Playa del Duque, this frontline beach property immerses you in a vibrant lifestyle surrounded by high-end designer boutiques (Louis Vuitton, Gucci, Dolce & Gabbana), upscale shopping centres like Marina Banus and El Corte Inglés, Michelin-starred restaurants, trendy beach clubs, and pulsating nightlife. Perfectly positioned along the famous Golden Mile, it's just a short stroll to gourmet dining, exclusive lounges, and the marina's jet-set atmosphere, with easy access to Marbella's Old Town, world-class golf courses, and attractions like the Fly Blue Catamaran rides.

Currently undergoing reforms, this second-hand gem on the second floor (with lift) offers two bedrooms, one bathroom, a kitchen, living room, and a charming small balcony overlooking the bustling main street of Banús – ideal for people-watching in this affluent hotspot. North-facing for cooler, comfortable living, it presents a blank canvas to finish to your personal taste, blending modern luxury with the area's Andalusian charm.

Priced at €520,000 – a rare chance to invest in Puerto Banús' high-demand market, whether as a holiday retreat, permanent residence, or lucrative rental property.



Features:

Features

Lift
Near Transport
Marble Flooring
Double Glazing
Near Church
Access for people with reduced mobility

Views

Garden
Courtyard
Urban
Street

Furniture

Not Furnished

Category

Beachfront

Orientation

North

Setting

Commercial Area
Beachside
Close To Port
Close To Sea
Close To Shops
Close To Town
Close To Schools
Beachfront
Town
Port
Marina
Close To Marina
Front Line Beach Complex

Kitchen

Not Fitted

Climate Control

Pre Installed A/C

Condition

Renovation Required

Parking

Street