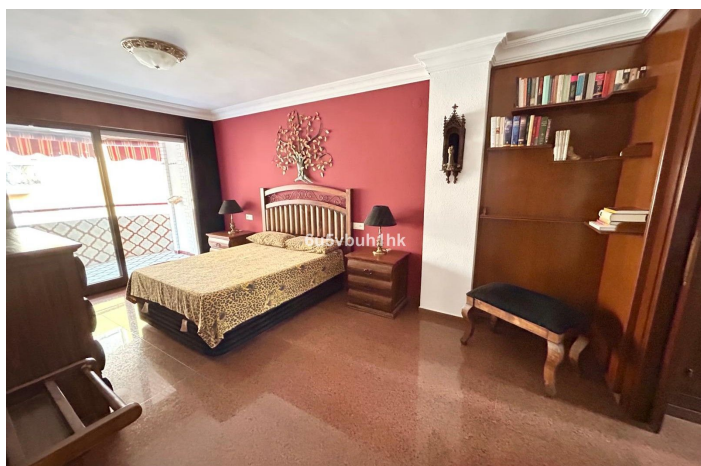




Apartamento Planta Media en venta en Fuengirola, Fuengirola

695.000 €

Referencia: R5258026 Dormitorios: 4 Baños: 2 Terreno: 453m² Construido: 217m² Terraza: 17m²





Costa del Sol, Fuengirola

This 217 m² apartment is located in the heart of Fuengirola, in one of the most sought-after areas for its convenience and access to all amenities. The completely exterior-facing home offers a spacious and functional layout that guarantees natural light throughout the day. It consists of four generously sized bedrooms (one used as an office), a living room with a separate dining area, ideal for gatherings and family gatherings, and two full bathrooms. It also has two terraces with direct access from different rooms, a large kitchen with space for a breakfast bar, a walk-in dressing room, and a hall that provides independence and privacy to the living area. The granite floors are uniform throughout the property, providing durability and a high-quality finish. The home stands out for its spaciousness in every room and for its exterior orientation, which allows for cross ventilation and excellent natural light. Thanks to its layout and available surface area, there is the possibility of dividing the property into two or even three separate apartments, making this home a very attractive option for those seeking value for money in a strategic location. It includes a 27 m² garage space with capacity for parallel parking for two vehicles and a motorcycle, an added value in this central location. Located just a stone's throw from the beach and surrounded by all kinds of amenities such as shops, public transport, restaurants, and educational centers, this apartment represents a unique opportunity for those seeking spaciousness, location, and convenience in the center of Fuengirola.



Características:

Características

Terraza Cubierta
Ascensor
Cerca de Transporte
Terraza Privada
Baño En-Suite
Armarios Empotrados
WiFi
Cerca de una Iglesia
Fibra óptica

Vistas

Vistas Urbanas
Vistas a Calle

Cocina

Cocina Equipada
Kitchen-Lounge

Servicios Públicos

Electricidad
Agua Potable
Gas

Orientación

Oeste

Posición

Cerca de Puerto
Cerca del Mar
Cerca de Tiendas
Cerca de Colegios
Ciudad
Cerca de Marina

Seguridad

Alarma

Climatización

Aire Acondicionado

Muebles

Completamente Amueblada
Opcionales

Aparcamiento

Parking Subterráneo
Garaje
Parking Privado