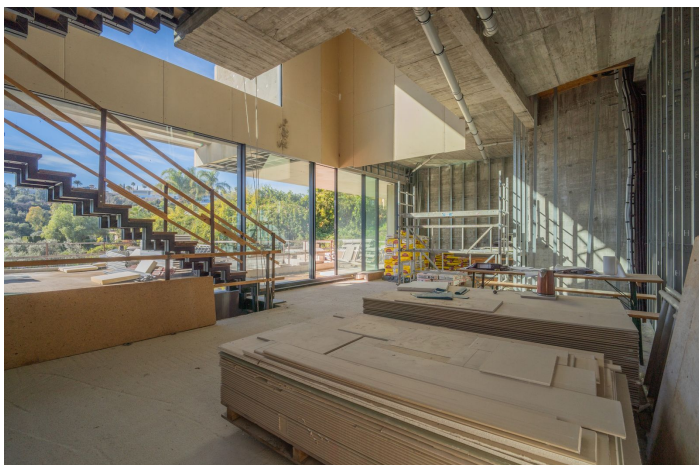




Villa - Chalet en venta en Benahavís, Benahavís

2.940.000 €

Referencia: R5305513 Dormitorios: 5 Baños: 5 Terreno: 1.350m² Construido: 414m² Terraza: 356m²





Costa del Sol, Benahavís

Exceptional opportunity to acquire a new-build luxury villa project already under construction, located on an elevated south-west facing plot in the prestigious residential area of La Alquería, Benahavís.

The 1,350 m² plot enjoys a privileged raised position, offering open sea and golf views, excellent sunlight throughout the day and long-term value in one of the most sought-after villa zones on the Costa del Sol.

The project comes with an approved building license for a contemporary 5-bedroom, 5-bathroom villa, distributed over three levels, designed with clean architectural lines and a strong focus on precision and quality:

- 414 m² interior built area
- 356.98 m² terraces
- 81 m² private swimming pool
- 200 m² panoramic rooftop terrace

Construction is already approximately 65% completed, executed with exceptional accuracy and craftsmanship.

The concrete structure has been built extremely linear and precise, reflecting high construction standards from the very foundation.

The villa features Sky-Frame floor-to-ceiling sliding doors, ensuring seamless indoor-outdoor living, maximum natural light and uninterrupted views.

Located where Marbella, Estepona and Benahavís meet, La Alquería is one of the fastest-developing luxury residential areas, surrounded by golf courses, nature and exclusive villas.

Just minutes from Puerto Banús, international schools, beaches and amenities, this property represents a rare turnkey-in-progress opportunity, ideal both as a dream home and a high-end investment.

License. Construction in progress. Premium quality. Prime location.

A truly outstanding opportunity in one of Marbella's most promising luxury areas.



Características:

Características

Ascensor
Cerca de Transporte
Solario

Posición

Cerca de Golf
Cerca de Tiendas
Cerca de Ciudad

Jardin

Jardín Privado

Orientación

Orientación Suroeste

Estado

Excelente estado de conservación

Aparcamiento

Parking Cubierto

Vistas

Vistas al Mar
Vistas Panorámicas
Vistas a Piscina
Vistas a Golf

Piscina

Piscina Privada

Categoría

Inversion
Golf
Lujo