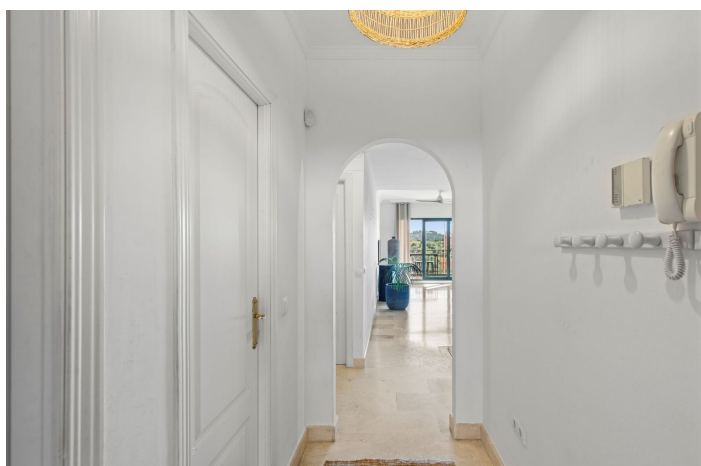




Apartamento Planta Media en venta en Elviria, Marbella

395.000 €

Referencia: R5311822 Dormitorios: 2 Baños: 2 Construido: 84m²





Costa del Sol, Elviria

Located in Urb. El Mirador Santa María del Golf, in Marbella East, this apartment stands out primarily for its spectacular open south-east facing views, allowing for exceptional natural light throughout the day and into the late afternoon.

The property offers two bedrooms and two bathrooms and was fully refurbished in 2021. The open-plan kitchen integrates seamlessly with the living area, creating a spacious, functional, and bright environment oriented towards the terrace and the unobstructed views of the natural surroundings and the Mediterranean horizon. The layout has been designed to maximise the sense of space and the connection with the outdoors.

The apartment includes a spacious underground parking space suitable for two small cars, as well as a storage room, adding further convenience. The community is family-oriented, quiet, and well maintained, ideal for those seeking a consolidated residential environment in close contact with nature.

The location combines privacy and accessibility: just a 20-minute walk to the beach, mountain trails five minutes away, and a shopping centre with a wide range of services approximately 1 km from the property. Currently, no new tourist rental licences are being granted in the area, reinforcing its residential character and long-term stability.

A well-balanced property offering views, natural light, and quality of life in one of the most established areas of Marbella East.



Características:

Características

Ascensor
Terraza Privada
Armarios Empotrados
WiFi

Vistas

Vistas al Mar
Vistas a Montaña
Vistas Panorámicas
Vistas al Campo
Vistas a Jardín
Vistas a Piscina
Vistas a Golf

Piscina

Piscina Comunitaria

Jardín

Jardín Comunitario

Servicios Públicos

Electricidad
Agua Potable

CO2 Emission Rating

E

Orientación

Orientación Sureste

Posición

Cerca de Golf
Urbanización
Cerca de Colegios

Muebles

Sin Amueblar

Seguridad

Recinto Cerrado

Categoría

Reventa

Climatización

Aire Acondicionado

Estado

Excelente estado de conservación

Cocina

Cocina Equipada

Aparcamiento

Párking Subterráneo

Calificación energética

G