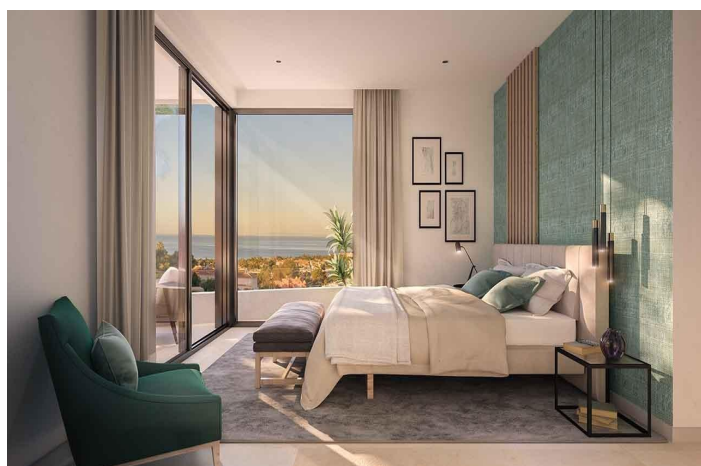
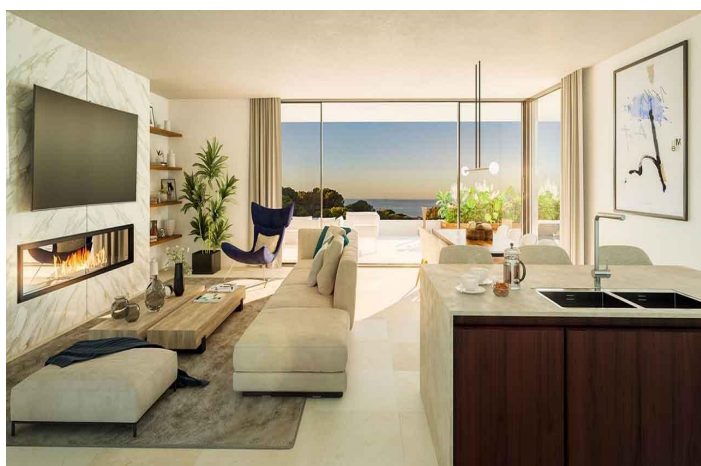




## Apartment for sale in Marbella, Marbella

1,150,000 €

Reference: N7475   Bedrooms: 3   Bathrooms: 2   Plot Size: 19m<sup>2</sup>   Build Size: 164m<sup>2</sup>   Terrace: 81m<sup>2</sup>





---

## Costa del Sol, Marbella

### LUXURY URBANIZATION IN MARBELLA WITH SEA VIEWS

Innovative project in Marbella, consisting of 1, 3 and 4 bedroom flats and penthouses. Spectacular sea views, and front line golf. Close to the area of Dunas de Artola which leads to the beautiful and secluded 1200m long sandy beach of fine golden sand, next to the marina.

Enclosed urbanisation with large garden areas and 2 distinct swimming pool areas. Flats created with the soul of villas. The space will be the protagonist of your new home, flooding every corner with Mediterranean light. Thanks to its large windows flush with the floor, the interior space merges with the terraces to create a sense of continuity between the open-plan rooms and the large terrace that opens onto the sea and the mountains. If you have always dreamed of waking up to the sea, now you have the opportunity to achieve your dreams.

Marbella is considered the capital of the western Costa del Sol. Bathed by the sea and sheltered from the mountains, with splendid and extensive beaches of calm waters along 27 km of coastline, natural attractions, marinas, 21 golf courses, and a wide gastronomic offer, from the typical "chiringuitos" beach bars and tapas bars, to the most luxurious Michelin-starred restaurants. All this, coupled with its microclimate with 320 days of sunshine a year, makes Marbella one of the most sought-after destinations in Spain to live in.



## Features:

### Features

Garden

Near Golf / Golf Resort Property

Near Trees

Useable Build Space: 123 Msq.

Number of Parking Spaces: 2

Communal Pool

Gated

Heating: Yes, Air Conditioning: Yes

Terrace: 81 Msq.

Double Bedrooms: 3

Location: Coastal, Urbanisation

Parking - Space

Beach: 1400 Meters

Elevator/Lift

Views: Sea

Near Bus Route

Key Ready

Near Schools

Near Commercial Center

### Energy Rating

B

### CO2 Emission Rating

B