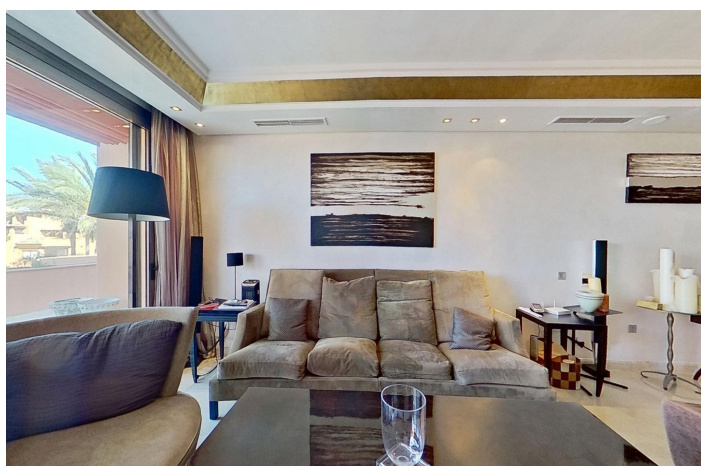




## Penthouse for sale in Los Monteros, Marbella

3,950,000 €

Reference: R5017567 Bedrooms: 3 Bathrooms: 3 Build Size: 431m<sup>2</sup>





---

## Costa del Sol, Los Monteros

Unique frontline beach penthouse with panoramic sea views ! - Reserva de los Monteros, Marbella Located within La Morera Playa - A Luxury apartment complex designed by the renowned architect Melvin Villarroel situated at La Reserva de Los Monteros just east of Marbella town. Facing directly the Mediterranean Sea, it offers some of the best sandy beaches in Marbella at the gates of the community - Ample interior space and terraces - All with the most stunning sea views - This is arguable the best penthouse in the complex ! This large duplex apartment has three spacious en suite bedrooms, with build-in wardrobes. The master bedroom, located upstairs, has furthermore a private terrace. The finishings include cream marble floors, underfloor heating, and travertine marble bathrooms and sauna in the master bedroom. The property has been meticulously maintained and is well presented in all areas. In addition, the property has two ample garage spaces and a storeroom included in the price. A beautiful apartment in a fantastic location close to all the amenities and Marbella town - Located just 5 kilometres from Marbella town center and within easy reach of Marbella numerous golf courses. This exclusive and very private community has 45 apartments and duplex apartments - All built to a very high standard with bright and spacious rooms. The development enjoys a concierge service and 24 hour security with guards and CCTV. In addition the community has more than 10.000 m2 of sub-tropical gardens - Swimming pool, gymnasium, sauna and indoor swimming pool. 3B/3.5B - Living area: 256 m<sup>2</sup>. - Terraces: 175 m<sup>2</sup>. - Total built area: 431 m<sup>2</sup>.



## Features:

### Features

Covered Terrace  
Lift  
Private Terrace  
Marble Flooring  
Double Glazing  
Fitted Wardrobes  
Utility Room  
Domotics

### Views

Sea Views  
Panoramic  
Garden

### Pool

Communal  
Garden  
Communal

### Category

Beachfront  
Luxury

### Orientation

South

### Setting

Beachside  
Urbanisation  
Close To Sea  
Close To Shops  
Close To Schools  
Beachfront  
Front Line Beach Complex

### Furniture

Not Furnished

### Security

Gated Complex  
24 Hour Security

### Climate Control

Air Conditioning  
Fireplace  
U/F Heating  
U/F/H Bathrooms

### Condition

Excellent

### Kitchen

Fully Fitted

### Parking

Underground  
Garage