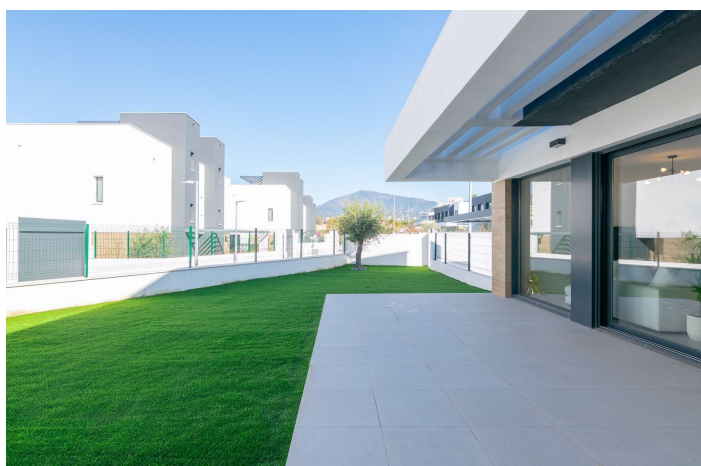




Semi-Detached House zum Verkauf in Atalaya, Estepona

950.000 €

Referenz: R5327509 Schlafzimmer: 3 Badezimmer: 3 Grundstücksgröße: 111m² Garten: 180m² Terrasse: 32m²





Costa del Sol, Atalaya

Contemporary Corner Semi-Detached Home in Atalaya with Greater Privacy, Private Garden and Flexible Basement Space

Set within a modern residential community in Atalaya, this south-facing corner semi-detached home combines contemporary architecture, generous natural light and a practical layout designed for comfortable everyday living. Its corner position gives it a clear advantage over a typical internal unit, offering greater privacy, a more open overall feel and a larger private garden to enjoy throughout the year.

The property offers 180 m² of built space, a 32 m² terrace and a 111 m² private plot. The main floor is centred around an open-plan living and dining area with large windows and direct access to the outdoor spaces, creating an easy connection between the interior, the covered terrace and the garden. The kitchen, with its central island and clean modern lines, reinforces the home's bright, functional and social character.

Upstairs, the bedroom accommodation is well suited to family life or extended stays, while the lower level adds valuable flexibility. Currently arranged as a multi-purpose leisure area, the basement can easily serve as a games room, gym, cinema room, office, guest area or additional family space depending on the buyer's needs.

With private parking for two vehicles, a low-maintenance garden and access to the communal pool, this is a strong option for buyers looking for a modern home with more privacy than a standard semi-detached unit, within easy reach of golf, schools and the main routes connecting Marbella, Estepona and the wider coast.



Eigenschaften:

Merkmale

Überdachte Terrasse
Private Terrasse
Satellitenfernsehen
Lagerraum
Badezimmer
Doppelverglasung
Einstellungsschränke
W-lan
Versorgungsraum
Grill
Keller
Glasfaser

Ansichten

Berg
Garten

Pool

Gemeinschaft
Garten
Privat
Einfache Wartung

Versorgungsunternehmen

Strom

Orientierung

Süden

Einstellung

In der Nähe von Golf
Urbanisierung
In der Nähe von Schulen

Möbel

Voll eingerichtet

Sicherheit

Elektrische Jalousien
Eingabetelefon

Kategorie

Ferienhäuser
Investition
Golf
Luxus
Wiederverkauf
Zeitgenössisch

Klimakontrolle

Klimaanlage
Zentralheizung

Zustand

Neubau

Küche

Voll ausgestattet

Parken

Garage
Privat
Offen
Mehr als eins