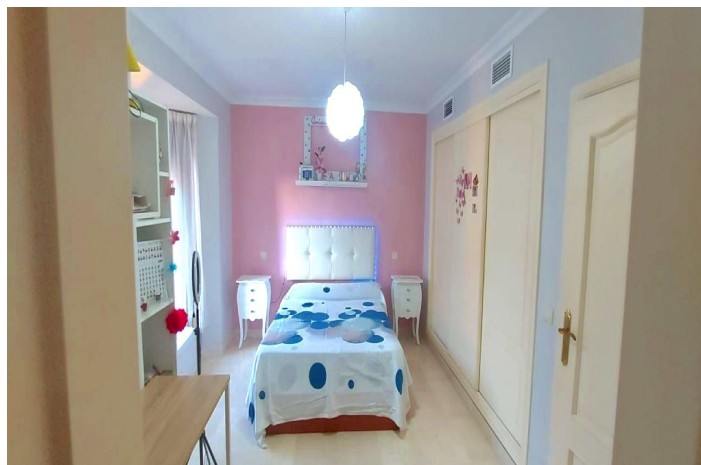




Duplex for sale in Manilva, Manilva

380,000 €

Reference: R5336323 Bedrooms: 3 Bathrooms: 4 Build Size: 153m² Terrace: 50m²





Costa del Sol, Manilva

Luxury Duplex Penthouse with Tourist Licence & Panoramic Sea Views – Aldea Beach, Manilva

Magnificent duplex penthouse with active tourist licence in the exclusive gated community of Aldea Beach, just a 5-minute walk from the beach. This property combines luxury finishes, privacy, incredible views and strong rental potential.

Spread over two floors with private terraces on both levels, it offers 153 m² of built space and 3 en-suite bedrooms – ideal for families or as a high-yield holiday rental investment.

Key Features

153 m² built

3 bedrooms, each with en-suite bathroom

Master bedroom with walk-in wardrobe

3 full bathrooms

South orientation – maximum natural light

Private terrace on each floor with panoramic sea and mountain views

Air conditioning throughout

Fitted wardrobes

Underground parking space included

Community Amenities

Quiet gated urbanisation

Communal swimming pool

Beautiful landscaped gardens

Prime Location

Only 5 minutes' walk to the golden sandy beaches of Sabinillas. 15-minute stroll along the promenade to the vibrant La Duquesa Marina with restaurants, shops and nightlife. Close to Estepona (10 min drive), Sotogrande and all services.

A rare opportunity to own a turnkey luxury duplex with tourist licence in a prime beachfront location – perfect for personal use or excellent rental income.

Viewing highly recommended – contact us today to arrange a private viewing!



Features:

Features

Covered Terrace
Lift
Near Transport
Private Terrace
Storage Room
Ensuite Bathroom
Marble Flooring
Double Glazing
Fitted Wardrobes
WiFi
Utility Room
Fiber Optic

Views

Sea Views
Panoramic
Garden
Courtyard
Street

Pool

Communal
Children`s Pool

Garden

Communal

Orientation

South

Setting

Beachside
Urbanisation
Close To Shops
Close To Town
Close To Schools

Furniture

Fully Furnished

Security

Gated Complex
Alarm System
Entry Phone

Climate Control

Air Conditioning
Pre Installed A/C
Cold A/C
Hot A/C
Fireplace

Condition

Excellent

Kitchen

Fully Fitted

Parking

Underground
Garage
Private
Covered