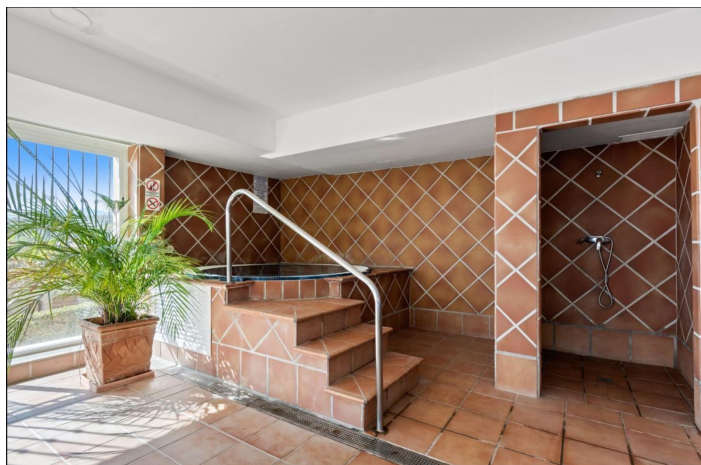




Middle Floor Apartment for sale in Atalaya, Estepona

495,000 €

Reference: R5034658 Bedrooms: 2 Bathrooms: 3 Build Size: 125m² Terrace: 34m²





Costa del Sol, Atalaya

A superb 2 bedroomed first floor apartment in Marques de Atalaya, with beautiful views across the landscaped gardens and Atalaya Golf Course to the South and West, perfect for long sunny afternoons and evenings! Marqués de Atalaya is a luxury urbanization on the border between Estepona and Benahavis – about a 5 minute drive from the sunny beaches of the Costa del Sol. The complex consists of 15 apartment blocks with four outdoor swimming pools, an indoor pool as well as spa and sauna facilities, a gym and a tennis court. All of these facilities are available for the use of owners, residents and their guests. There is a 24 hour security/concierge service in place. This property is immaculate, virtually as new, and features hallway, kitchen, a huge lounge/dining area leading onto the sunny terrace. 2 large bedrooms, both with en suite bathrooms, a guest toilet and a dressing area. The property is sold with a storeroom and 2 underground parking spaces included. Marques de Atalaya is close to schools, supermarkets and restaurants, and is within easy reach of Benahavis, San Pedro, Guadalmina and Estepona. There is easy access to the A7 in both directions 1km from the property. Middle Floor Apartment, Atalaya, Costa del Sol. 2 Bedrooms, 3 Bathrooms, Built 148 m², Terrace 30 m². Setting : Frontline Golf, Commercial Area, Close To Golf, Close To Port, Close To Shops, Close To Sea, Close To Town, Close To Schools, Close To Marina, Urbanisation. Orientation : South West. Condition : Excellent. Pool : Communal, Indoor, Heated, Children`s Pool. Climate Control : Air Conditioning, Hot A/C, Cold A/C, U/F/H Bathrooms. Views : Sea, Mountain, Golf, Country, Garden. Features : Covered Terrace, Lift, Fitted Wardrobes, Private Terrace, WiFi, Gym, Tennis Court, Storage Room, Ensuite Bathroom, Access for people with reduced mobility, Marble Flooring, Double Glazing, Fiber Optic. Furniture : Fully Furnished. Kitchen : Fully Fitted. Garden : Communal, Landscaped. Security : Gated Complex, Electric Blinds, Entry Phone, 24 Hour Security, Safe. Parking : Underground, Garage, More Than One. Utilities : Electricity, Drinkable Water. Category : Golf, Holiday Homes, Resale, Contemporary.



Features:

Features

Covered Terrace
Lift
Private Terrace
Storage Room
Ensuite Bathroom
Marble Flooring
Double Glazing
Fitted Wardrobes
WiFi
Gym
Tennis Court
Fiber Optic
Access for people with reduced mobility

Views

Sea Views
Mountain
Country
Garden
Golf

Pool

Communal
Heated
Indoor
Children`s Pool

Garden

Communal
Landscaped

Utilities

Electricity
Drinkable Water

Orientation

South West

Setting

Commercial Area
Close To Golf
Close To Port
Urbanisation
Close To Sea
Close To Shops
Close To Town
Close To Schools
Frontline Golf
Close To Marina

Furniture

Fully Furnished

Security

Gated Complex
24 Hour Security
Electric Blinds
Entry Phone
Safe

Category

Holiday Homes
Golf
Resale
Contemporary

Climate Control

Air Conditioning
Cold A/C
Hot A/C
U/F/H Bathrooms

Condition

Excellent

Kitchen

Fully Fitted

Parking

Underground
Garage
More Than One