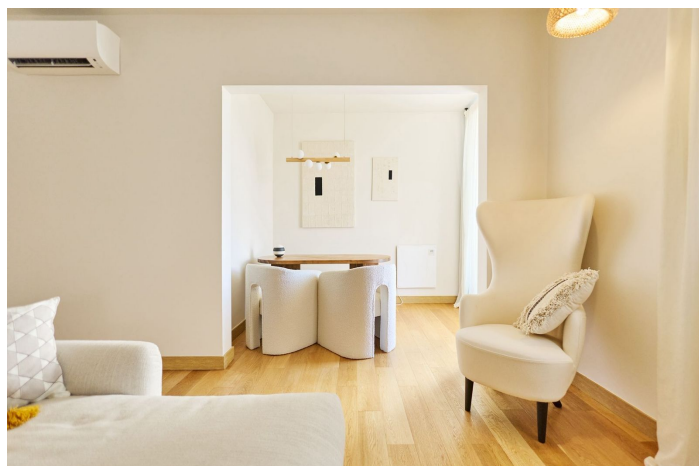
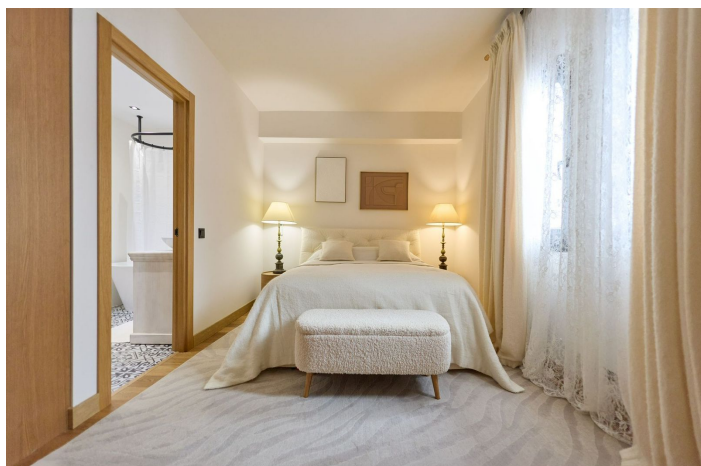




Middle Floor Apartment for sale in Puerto Banús, Marbella

1,100,000 €

Reference: R5339173 Bedrooms: 2 Bathrooms: 2 Build Size: 118m² Terrace: 10m²





Costa del Sol, Puerto Banús

Elegant Renovated 2-Bedroom Beachfront Apartment with Sea Views – Playas del Duque, Puerto Banús, Marbella
Discover this sophisticated and fully renovated 2-bedroom apartment in the iconic Playas del Duque – one of the most exclusive beachfront communities on the Golden Mile, right in the heart of Puerto Banús marina.
With 118 m² of bright, south-facing living space and a glazed terrace that seamlessly connects indoor and outdoor areas, this property offers the perfect blend of comfort, style and Mediterranean lifestyle.

Key Features

- 118 m² built | 113 m² useful
- 2 generous bedrooms (both with en-suite bathrooms)
- Bright living-dining room with large folding windows opening onto a glazed terrace
- Modern fully equipped kitchen
- Small open balcony with partial sea views
- Fitted wardrobes
- Air conditioning + individual heat pump heating
- Underground parking space included
- Built 1975 – completely renovated with premium finishes

Residence Amenities

- 24/7 concierge and security
- 3 communal swimming pools
- Tropical landscaped gardens
- Gym and private restaurant
- Direct beach access

Prime Location

Step out of the lift and you're on the famous Paseo Marítimo. Moments from Dalí sculptures, the Old Town, luxury boutiques, world-class restaurants and exclusive beach clubs. Quick access to Puerto Banús marina and all services. Ideal as a permanent residence, holiday home or high-yield investment in one of Marbella's most coveted beachfront addresses.

Viewing highly recommended – contact us today to arrange a private viewing!



Features:

Features

Covered Terrace
Lift
Near Transport
Private Terrace
Ensuite Bathroom
Marble Flooring
Double Glazing
Fitted Wardrobes
WiFi
Gym
Tennis Court
Jacuzzi
Domotics
Restaurant On Site
Near Church
Fiber Optic
Access for people with reduced mobility

Views

Panoramic
Garden
Courtyard
Urban

Pool

Communal
Children`s Pool

Garden

Communal
Landscaped

Category

Beachfront
Luxury

Orientation

South

Setting

Commercial Area
Beachside
Close To Port
Urbanisation
Close To Sea
Close To Shops
Close To Schools
Beachfront
Town
Port
Marina
Close To Marina
Front Line Beach Complex

Furniture

Fully Furnished

Security

Gated Complex
24 Hour Security
Alarm System
Entry Phone

Climate Control

Air Conditioning

Condition

Excellent
Recently Refurbished
Recently Renovated

Kitchen

Fully Fitted

Parking

Underground
Garage
Private
Covered