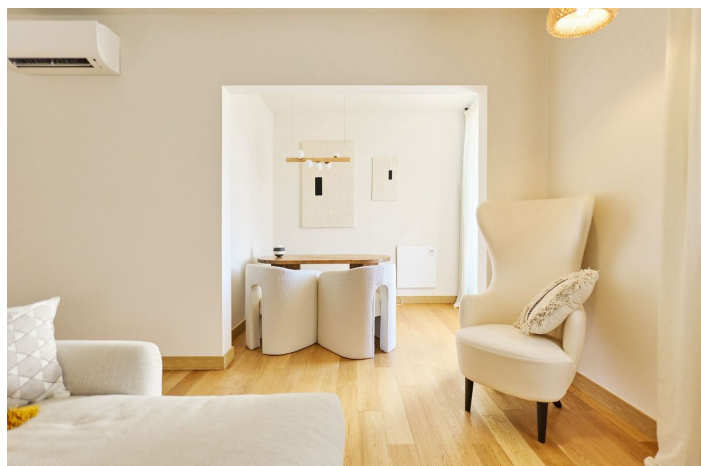
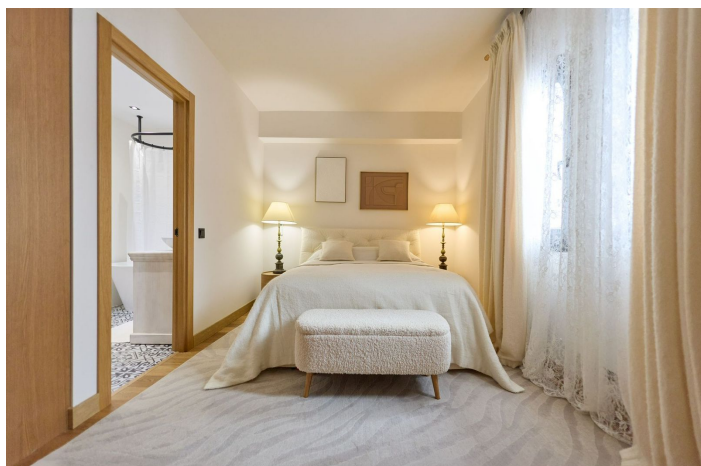




Apartamento Planta Media en venta en Puerto Banús, Marbella

1.100.000 €

Referencia: R5339173 Dormitorios: 2 Baños: 2 Construido: 118m² Terraza: 10m²





Costa del Sol, Puerto Banús

Elegant Renovated 2-Bedroom Beachfront Apartment with Sea Views – Playas del Duque, Puerto Banús, Marbella
Discover this sophisticated and fully renovated 2-bedroom apartment in the iconic Playas del Duque – one of the most exclusive beachfront communities on the Golden Mile, right in the heart of Puerto Banús marina.
With 118 m² of bright, south-facing living space and a glazed terrace that seamlessly connects indoor and outdoor areas, this property offers the perfect blend of comfort, style and Mediterranean lifestyle.

Key Features

- 118 m² built | 113 m² useful
- 2 generous bedrooms (both with en-suite bathrooms)
- Bright living-dining room with large folding windows opening onto a glazed terrace
- Modern fully equipped kitchen
- Small open balcony with partial sea views
- Fitted wardrobes
- Air conditioning + individual heat pump heating
- Underground parking space included
- Built 1975 – completely renovated with premium finishes

Residence Amenities

- 24/7 concierge and security
- 3 communal swimming pools
- Tropical landscaped gardens
- Gym and private restaurant
- Direct beach access

Prime Location

Step out of the lift and you're on the famous Paseo Marítimo. Moments from Dalí sculptures, the Old Town, luxury boutiques, world-class restaurants and exclusive beach clubs. Quick access to Puerto Banús marina and all services. Ideal as a permanent residence, holiday home or high-yield investment in one of Marbella's most coveted beachfront addresses.

Viewing highly recommended – contact us today to arrange a private viewing!



Características:

Características

Terraza Cubierta
Ascensor
Cerca de Transporte
Terraza Privada
Baño En-Suite
Suelos de Mármol
Doble acristalamiento
Armarios Empotrados
WiFi
Gimnasio
Pista de Tenis
Jacuzzi
Domotica
Restaurant
Cerca de una Iglesia
Fibra óptica
Access for people with reduced mobility

Vistas

Vistas Panorámicas
Vistas a Jardín
Vistas a Patio
Vistas Urbanas

Piscina

Piscina Comunitaria
Children`s Pool

Jardin

Jardín Comunitario
Jardín Paisajístico

Categoría

Frente a la playa
Lujo

Orientación

Sur

Posición

Área Comercial
Lado de la Playa
Cerca de Puerto
Urbanización
Cerca del Mar
Cerca de Tiendas
Cerca de Colegios
Primera línea de Playa
Ciudad
Puerto
Marina
Cerca de Marina
Complejo 1ª Línea de Playa

Muebles

Completamente Amueblada

Seguridad

Recinto Cerrado
Seguridad de 24 horas
Alarma
Portero Automático

Climatización

Aire Acondicionado

Estado

Excelente estado de conservación
Renovado Recientemente
Reformado Recientemente

Cocina

Cocina Equipada

Aparcamiento

Párking Subterráneo
Garaje
Párking Privado
Párking Cubierto