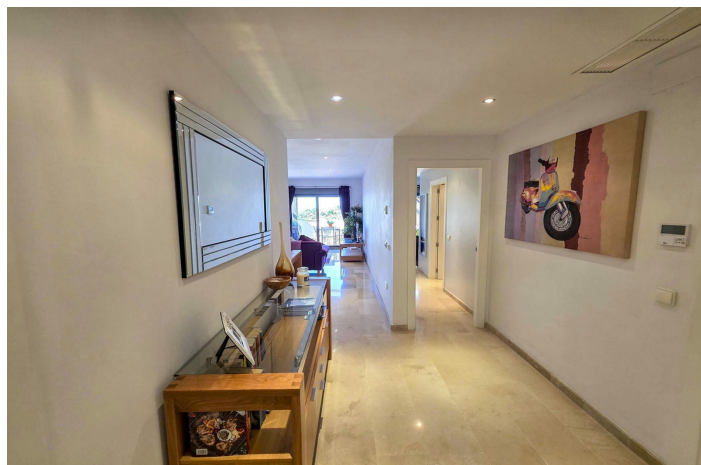




Penthouse for sale in Punta Chullera, Manilva

325,000 €

Reference: R5343052 Bedrooms: 2 Bathrooms: 2 Build Size: 147m² Terrace: 27m²





Costa del Sol, Punta Chullera

Just minutes from the world-renowned Marina de Sotogrande, in the exclusive Bahía de las Rocas/La Paloma district, lies this elegant residential complex designed for comfort, style, and relaxation.

Surrounded by lush, flower-filled gardens, the community features a large swimming pool and a paddle tennis court—perfect for leisure and wellbeing, yet thoughtfully designed to ensure peace and tranquility.

The apartment welcomes you with a spacious entrance hall leading into a bright and airy living area. From here, floor-to-ceiling doors open onto a 24 m² south-facing terrace, where you can enjoy panoramic views of the Mediterranean, Gibraltar, and the surrounding landscape—views guaranteed to inspire every day.

A semi-open, fully fitted kitchen with an adjoining utility room combines practicality with modern design. The home offers two generous double bedrooms with fitted wardrobes and two stylish bathrooms, including a luxurious en-suite with both shower and bath. The master bedroom also enjoys direct access to the terrace, allowing you to wake up to stunning sea views.

For convenience, the property includes a large underground parking space and a private storage room.

This home is the perfect balance of elegance, comfort, and Mediterranean lifestyle.



Features:

Features

Lift
Private Terrace
Storage Room
Marble Flooring
Double Glazing
Fitted Wardrobes
WiFi
Paddle Tennis
Utility Room
Barbeque

Views

Sea Views

Pool

Communal

Garden

Communal

Utilities

Electricity

Orientation

South

Setting

Urbanisation
Close To Sea
Close To Forest

Furniture

Fully Furnished

Security

Gated Complex
24 Hour Security

Category

Investment
Bargain

Climate Control

Air Conditioning

Condition

Excellent

Kitchen

Fully Fitted

Parking

Underground