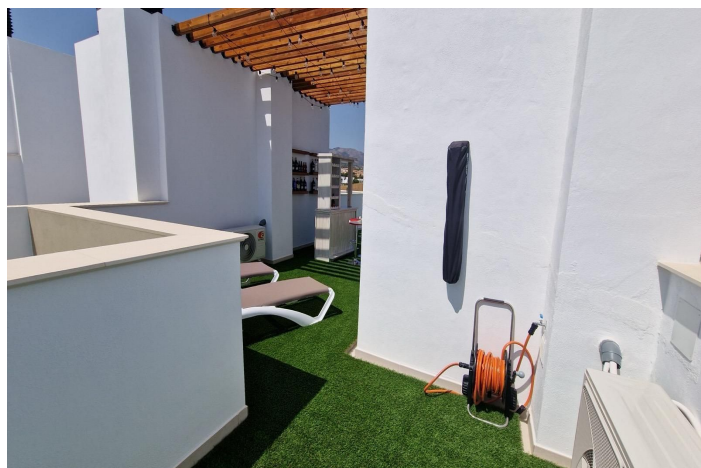
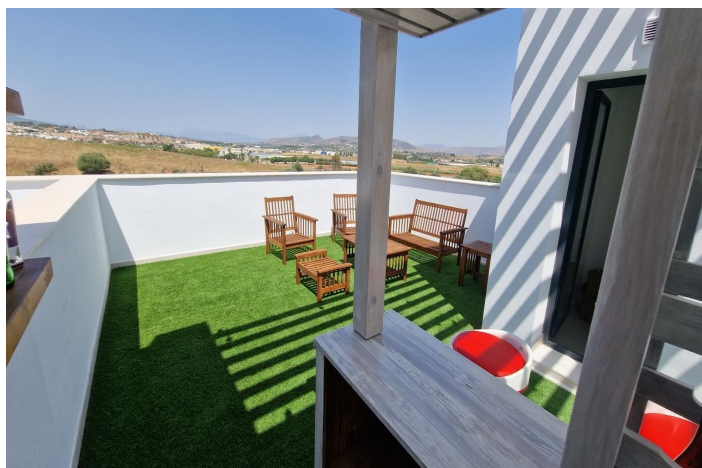
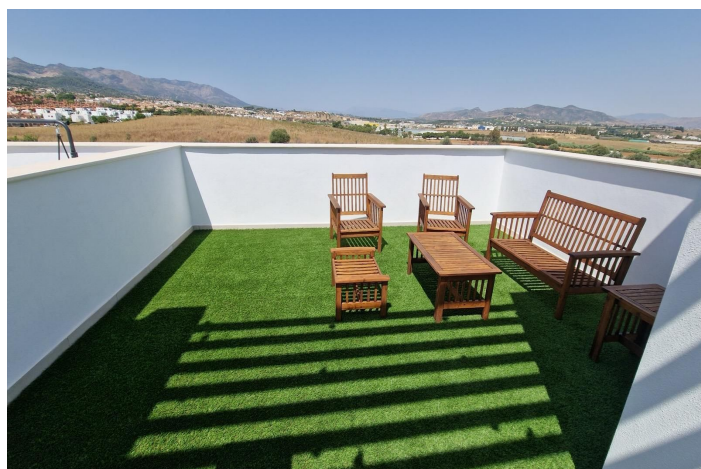
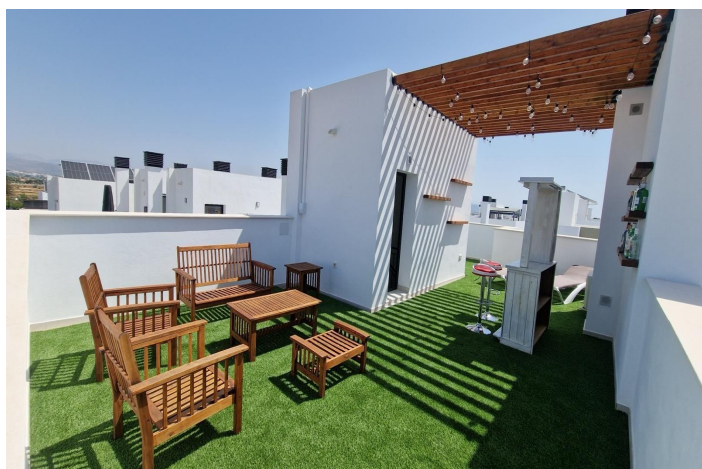




Adosada en venta en Alhaurín de la Torre, Alhaurín de la Torre

562.065 €

Referencia: R5344141 Dormitorios: 3 Baños: 3 Construido: 184m²





Valle del Guadalhorce, Alhaurín de la Torre

Corner Townhouse of Recent Construction in Alhaurín de la Torre

Discover this magnificent corner townhouse with 184 m² of built area, located in one of the most sought-after residential areas of Alhaurín de la Torre. A well-established, *δδζοο* and perfectly connected setting, just minutes from the motorway and the airport, with all essential services close at hand.

The property stands out for its excellent orientation, abundant natural light, and contemporary design that seamlessly blends style and functionality. Built with high-quality materials, it features an aerothermal system, ensuring energy efficiency and year-round comfort.

Layout:

Basement level: Fully fitted as a leisure or entertainment room, ideal for gatherings with family and friends.

Main floor: Welcoming front porch with private parking space. Inside, there is a guest toilet and a stylish open-plan kitchen with island, fully equipped and connected to a spacious, square-shaped living room. Large windows flood the space with natural light and provide access to a lovely terrace with open views of the countryside. The property includes double glazing, mosquito screens, and electric awnings.

First floor: Sleeping area comprising 3 bedrooms and 2 bathrooms. The master bedroom features a walk-in wardrobe and an en-suite bathroom with a walk-in shower.

Second floor: Spectacular chill-out style solarium terrace with stunning 360° panoramic views, sunbathing area, and bar space—perfect for enjoying the Mediterranean climate all year round.

Communal areas:

Well-maintained gardens and a communal swimming pool just a short walk away, set within a quiet, family-friendly environment.

In summary, a modern, comfortable home ready to move into, ideal as a primary residence or a holiday home. Located in a residential area with easy access to supermarkets, a petrol station, children's parks, and beautiful sunsets.



Características:

Características

Terraza Cubierta
Terraza Privada
Trastero - Almacén
Armarios Empotrados
Sala de Juegos

Vistas

Vistas a Montaña

Piscina

Piscina Comunitaria

Aparcamiento

Garaje

Orientación

Sur
Oeste

Posición

Área Comercial
Cerca de Tiendas
Cerca de Colegios
Ciudad

Cocina

Cocina Equipada

Servicios Públicos

Electricidad
Agua Potable
Teléfono
Gas

Climatización

Aire Acondicionado

Estado

Excelente estado de conservación

Jardin

Jardín Comunitario

Categoría

Inversion
Contemporáneo