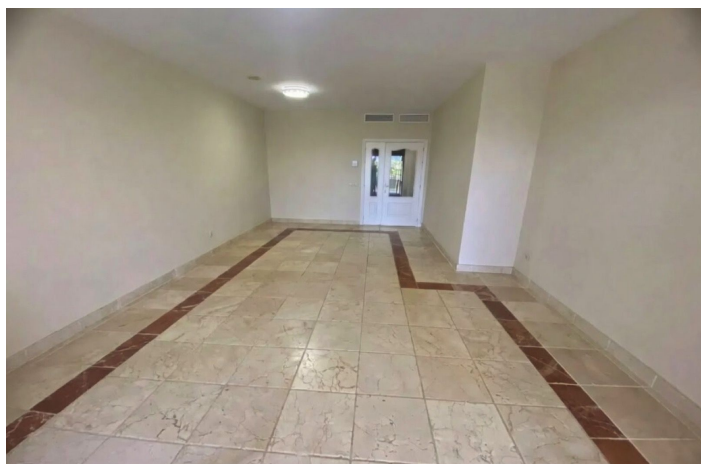




# Apartamento Planta Media en venta en Atalaya, Estepona

450.000 €

Referencia: R5350210    Dormitorios: 2    Baños: 2    Construido: 120m<sup>2</sup>    Terraza: 25m<sup>2</sup>





---

## Costa del Sol, Atalaya

Investment Opportunity – 2-Bedroom Apartment in Prestigious Benatalaya, Estepona

Beautiful 2-bedroom apartment for sale in the exclusive gated community of Benatalaya, one of Estepona's most prestigious residential resorts.

The property is currently rented until 2028 with excellent, reliable tenants paying €800/month + utilities. Perfect investment with immediate rental income.

Please note: Viewings are not possible at present as the tenant does not wish to be disturbed.

### Key Features

- 120 m<sup>2</sup> built
- 2 bedrooms | 2 bathrooms
- Spacious living-dining room with access to a large covered terrace
- Fully equipped kitchen
- Fitted wardrobes
- Storage room (trastero)
- 2 underground parking spaces included
- East orientation – bright and sunny
- Air conditioning

### Luxury Resort Amenities

- 24-hour security
- Indoor heated swimming pool
- Several outdoor swimming pools
- Sauna and Turkish bath
- 25,000 m<sup>2</sup> of beautifully designed gardens

Located in a peaceful, high-end urbanisation with excellent facilities, just minutes from Estepona centre, the beach and all services.

A rare turnkey investment in a premium community with long-term rental in place.



## Características:

### Características

Terraza Cubierta  
Ascensor  
Cerca de Transporte  
Terraza Privada  
Trastero - Almacén  
Baño En-Suite  
Suelos de Mármol  
Doble acristalamiento  
Armarios Empotrados  
WiFi  
Gimnasio  
Sauna  
Lavadero  
Jacuzzi  
Fibra óptica  
Access for people with reduced mobility

### Vistas

Vistas a Jardín  
Vistas a Patio

### Piscina

Piscina Comunitaria  
Children`s Pool

### Jardín

Jardín Comunitario

### Orientación

Este

### Posición

Área Comercial  
Cerca de Golf  
Urbanización  
Cerca de Tiendas  
Cerca de Ciudad  
Cerca de Colegios  
Primera línea de Golf

### Muebles

Completamente Amueblada

### Seguridad

Recinto Cerrado  
Seguridad de 24 horas

### Climatización

Aire Acondicionado

### Estado

Excelente estado de conservación

### Cocina

Cocina Equipada

### Aparcamiento

Párking Subterráneo  
Garaje  
Párking Privado  
Párking Cubierto  
More Than One