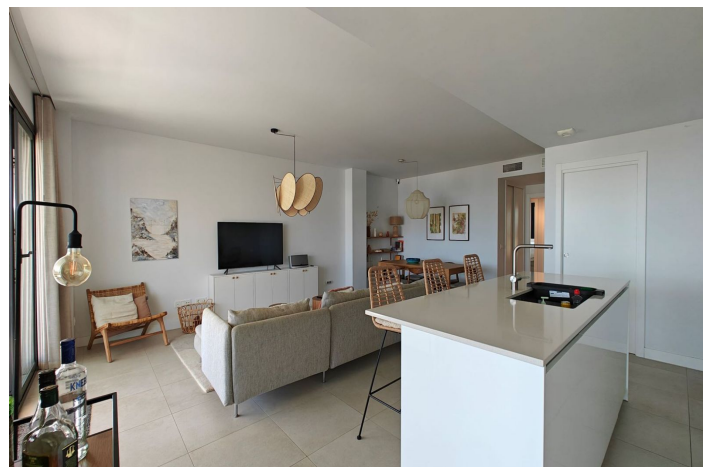




Apartamento Planta Media en venta en Estepona, Estepona

885.000 €

Referencia: R5351626 Dormitorios: 4 Baños: 3 Construido: 131m² Terraza: 45m²





Costa del Sol, Estepona

This well-located apartment in Estepona offers comfort, convenience and excellent communal facilities in a desirable urbanisation close to the Estepona Marina, shops, the town centre and local schools. With a south-facing orientation, a heated indoor communal pool and private parking, the property is ideal as a permanent residence, holiday home or investment on the Costa del Sol.

Interior Features

The property includes air conditioning with heating and cooling, built-in wardrobes and a private terrace. Contemporary design with open-plan kitchen, large windows and energy efficiency. The kitchen features quality appliances and a functional layout.

The bedrooms are spacious and peaceful, offering ample built-in storage, while the bathrooms showcase high-quality modern finishes that combine comfort with understated style.

Exterior & Community Amenities

This modern residential complex offers a range of high-quality communal facilities designed for comfort and convenience. Residents can enjoy both an indoor heated swimming pool and an outdoor pool, ideal for relaxation and leisure throughout the year.

The development also features a fully equipped communal gym, as well as secure underground parking and private storage rooms.

With its south-facing orientation and excellent location close to Estepona Marina, shops, the sea, the town centre and local schools, the community combines modern living with easy access to everything Estepona has to offer. The apartment has rental license in place.



Características:

Características

Terraza Cubierta
Ascensor
Cerca de Transporte
Terraza Privada
TV Satélite
Trastero - Almacén
Baño En-Suite
Doble acristalamiento
Armarios Empotrados
WiFi
Gimnasio
Sauna
Lavadero
Fibra óptica
Access for people with reduced mobility

Vistas

Vistas al Mar
Vistas a Montaña
Vistas a Jardín
Vistas a Piscina
Vistas a Calle

Piscina

Con Calefacción
Piscina Cubierta

Jardín

Jardín Comunitario

Servicios Públicos

Electricidad
Agua Potable

Orientación

Sur
Orientación Sureste
Orientación Suroeste

Posición

Cerca de Puerto
Urbanización
Cerca del Mar
Cerca de Tiendas
Cerca de Ciudad
Cerca de Colegios
Cerca de Marina

Muebles

Completamente Amueblada

Seguridad

Recinto Cerrado
Alarma
Portero Automático

Categoría

Inversion
Lujo
Reventa
Contemporáneo

Climatización

Aire Acondicionado
A/A Frio
A/A Caliente

Estado

Excelente estado de conservación

Cocina

Cocina Equipada

Aparcamiento

Párking Subterráneo
Párking Privado
Párking Cubierto