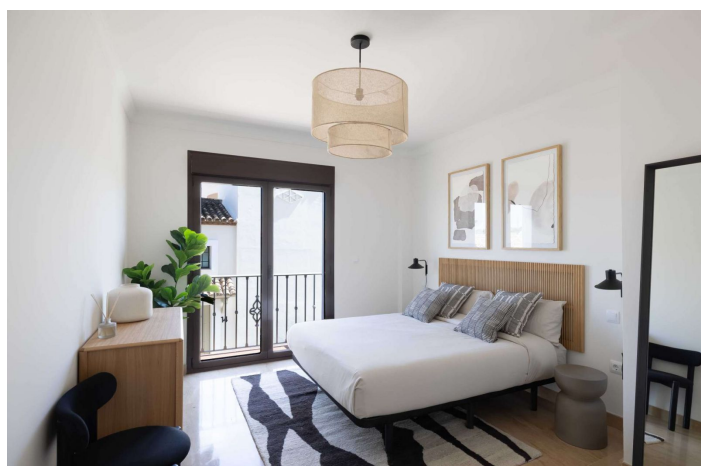




Townhouse for sale in Valle Romano, Estepona

405.000 - 593.750 €

Referenz: R5049157 Schlafzimmer: 3 Badezimmer: 2 Garten: 230m² - 263m² Terrasse: 15m² - 79m²





Costa del Sol, Valle Romano

Welcome to the residential complex in Estepona, your new home on the Costa del Sol. The residential development is an exclusive promotion of 87 single-family homes ready to move into, located in the west area of Estepona, next to the new High Resolution Hospital and right on the golf course. This area, undergoing significant urban expansion, is becoming one of the most prestigious and promising residential destinations on the Costa del Sol. The homes, spread over two floors plus a basement, have three bedrooms and two bathrooms, large private terraces, and in some cases, a solarium with stunning views of the sea and the golf course. Designed in a modern style inspired by Mediterranean architecture, they offer bright rooms, marble floors, double-glazed windows, electric blinds, and a whirlpool bathtub designed for your wellbeing and comfort. The residential complex includes exclusive common areas such as indoor and outdoor swimming pools, a spa and gym, as well as redesigned gardens that bring harmony and wellbeing. The entire development is being completely renovated, both inside and out, to offer a high-quality, functional, and elegant environment. Thanks to its strategic location, surrounded by nature and perfectly connected to Estepona, Marbella, Sotogrande, and the airports of Málaga and Gibraltar, this development represents a unique investment and lifestyle opportunity on the Costa del Sol. Immediate delivery.



Eigenschaften:

Merkmale

Überdachte Terrasse
Private Terrasse
Lagerraum
Marmorböden
Doppelverglasung
Einstellungsschränke
Fitnessstudio
Keller

Ansichten

Meer
Panorama
Land
Golf

Pool

Gemeinschaft
Innenräume

Sicherheit

Gated Complex
Eingabetelefon

Orientierung

Ost
Südost

Einstellung

In der Nähe von Golf
In der Nähe des Meeres
In der Nähe von Geschäften
In der Nähe der Stadt
In der Nähe von Schulen
Frontline Golf

Küche

Küchenlehre

Parken

Unterirdisch
Garage
Privat

Klimakontrolle

Vor installierte a/c

Zustand

Neubau

Garten

Gemeinschaft

Kategorie

Neuentwicklung